

Proposed Lands with Wilderness Characteristics

Devils Canyon and Bronco Wash

Public Lands in Mohave County, AZ



A proposal report to the Bureau of Land
Management, Kingman Field Office, Arizona

March 2018

Prepared by:
James Holderer



ARIZONA
WILDERNESS
COALITION

Table of Contents

PREFACE: This Proposal was developed according to BLM Manual 6310 P. 3

Section 1: Overview of the Proposed Lands with Wilderness Characteristics

Unit Introductions: Overview maps showing unit locations and boundaries P. 6

- *Provides a brief description of unit boundaries and characteristics and scenic photo points*

Section 2: Documentation of Wilderness Characteristics

The proposed LWCs meet the minimum size criteria for roadless lands P.9

The proposed LWCs are affected primarily by the forces of nature P.9

The proposed LWCs have outstanding opportunities for solitude and/or primitive and unconfined recreation P.10

Supplemental values P.11

Scenic Photos: images that capture the wilderness character of the proposed LWCs P.12

Section 3: Maps and Description of the Unit Boundary, Routes, and Impacts

Overview maps showing extent of inset maps P. 21

Inset maps with photopoint locations P. 22

Narrative description of the proposed LWC boundaries and vehicle routes P. 28

Section 4: Photopoint Data

Data tables and geotagged photographs to accompany the detailed boundary & vehicle routes description P. 32

PREFACE: This Proposal was developed according to BLM Manual 6310 General Overview

Instruction Memorandum 2011-154 and Manuals 6310 and 6320 set out the BLM’s approach to protecting wilderness characteristics on public lands. This guidance acknowledges that wilderness is a resource that is part of BLM’s multiple use mission, requires the BLM to keep a current inventory of wilderness characteristics, and directs the agency to consider protection of these values in land use planning decisions.¹

In March 2012, the Bureau of Land Management issued updated manuals for inventorying and managing Lands with Wilderness Characteristics on public lands (hereafter often referred to as LWC’s). These manuals provide the agency with direction for implementing its legal obligations to inventory and consider management of Lands with Wilderness Characteristics, including the Federal Land Policy and Management Act’s provision that BLM “preserve and protect certain public lands in their natural condition” (43 U.S.C. § 1701(a)(8)). **Manual 6310** (Conducting Wilderness Characteristics Inventory on BLM Lands) guides the BLM on how to meet its obligations to inventory for and identify lands with wilderness characteristics. **Manual 6320** (Considering Lands with Wilderness Characteristics in the BLM Land Use Planning Process) guides the BLM on the options available to address lands with wilderness characteristics in land use planning once they have been identified in the required inventory, such as putting management prescriptions in place to protect wilderness characteristics. **The purpose of this report is to provide the BLM with recommendations for designation of Lands with Wilderness Characteristics in the Kingman Field Office of northwestern Arizona, based on new, accurate, and up- to-date information, collected and presented according to the requirements described in Manual 6310.**²

¹ Memorandum 2011-154 is available online at:
http://www.blm.gov/wo/st/en/info/regulations/Instruction_Memos_and_Bulletins/national_instruction/2011/IM_2011-154.html

² Manual 6310 is available online at:
http://www.blm.gov/pgdata/etc/medialib/blm/wo/Information_Resources_Management/policy/blm_manual.Par.38337.File.dat/6310.pdf

What does Manual 6310 require for the identification of LWC's?

Minimum standard for LWC proposals are described in Manual 6310 in section .06.B.1. There are three things required in a citizen's wilderness proposal in order to meet the minimum standard for BLM to consider it in an inventory and to consider it as new information:

- Detailed map with specific boundaries;
- Detailed narrative of the wilderness characteristics; and
- Photographic documentation.

Once there is new information that meets these standards, then “as soon as practicable, the BLM shall evaluate the information,” including field checking as needed and comparing with existing data to see if previous conclusions remain valid. Further, BLM will document its rationale and make it available to the public (section .06.B.2). **This proposal report provides the three necessary criteria listed above.**

What does Manual 6310 require for an area to be identified as an LWC?

The requirements for determining whether lands possess wilderness characteristics are found in Manual 6310, section .06.C.2. Lands with Wilderness Characteristics must possess the following traits:

• **Size**

Sufficient roadless area to satisfy size requirements (5,000 acres, of sufficient size to make management practicable or “any roadless island of the public lands”; or contiguous with Wilderness, Wilderness Study Areas, USFWS areas Proposed for Wilderness, Forest Service WSAs or areas of Recommended Wilderness, National Park Service areas Recommended or Proposed for Designation).

• **Naturalness**

Affected primarily by the forces of nature – The criteria is “apparent naturalness” which depends on whether an area looks natural to “the average visitor who is not familiar with the biological composition of natural ecosystems versus human affected ecosystems.” This is an important distinction between ecological integrity and apparent naturalness.

Human impacts – Human impacts must be documented and some are acceptable so long as they are “substantially unnoticeable”; Examples include trails, bridges, fire rings, minor

radio repeater sites, air quality monitoring devices, fencing, spring developments, and stockpounds.

Outside human impacts – impacts outside the area are generally not considered, but major outside impacts should be noted and evaluated for direct effects on the entire area (the manual explicitly cautions BLM to “avoid an overly strict approach”).

• **Outstanding opportunities for either solitude or primitive and unconfined recreation**

The area does not have to possess both opportunities for solitude and primitive and unconfined recreation, nor does the area need to have outstanding opportunities on every acre; BLM cannot compare lands in question with other parcels; BLM cannot use any type of rating system or scale.

• **Supplemental values**

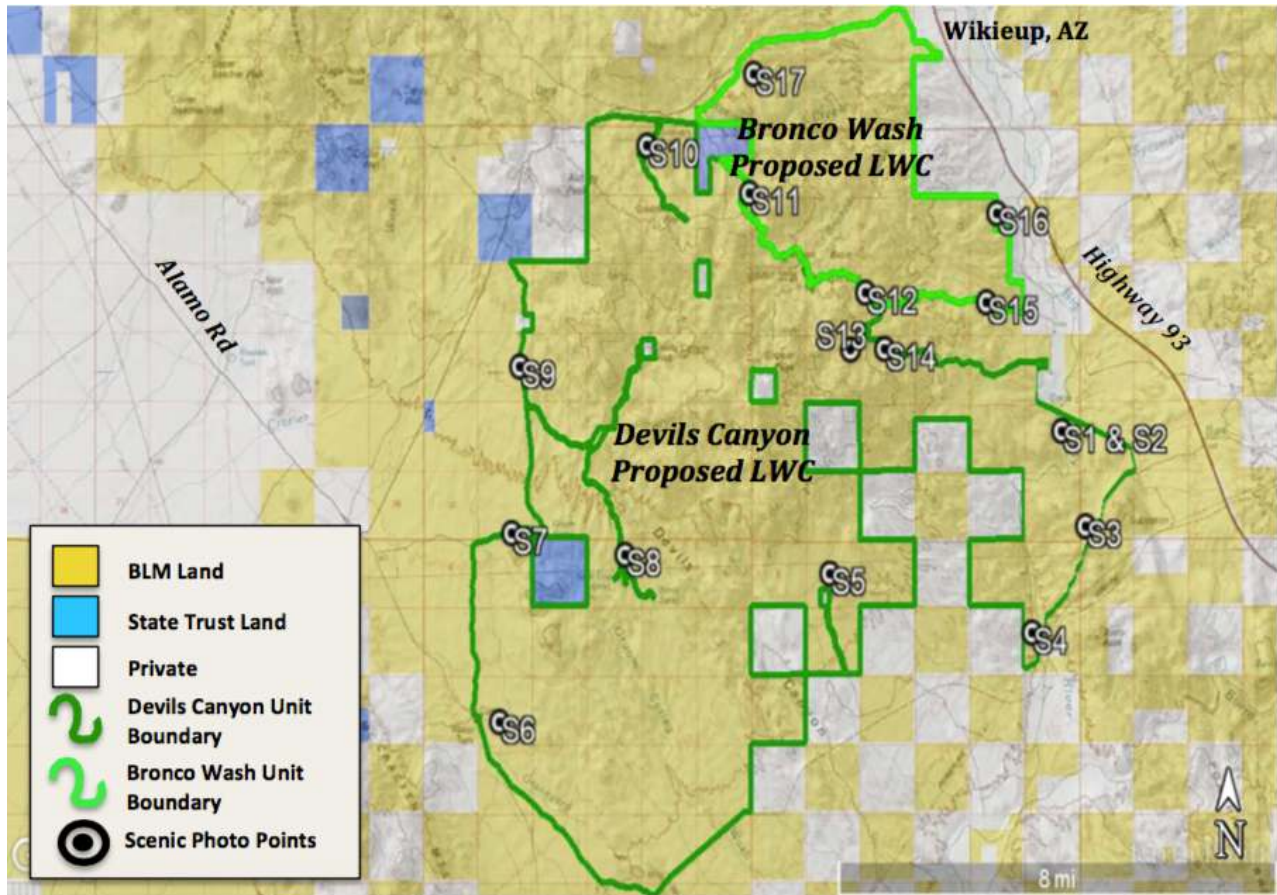
Ecological, geological, scientific, scenic, educational or historical features should be documented where they exist, although they are not required traits.

What does Manual 6310 require for the identification of the boundaries of an LWC?

Boundaries should be based on wilderness inventory roads and naturalness rather than opportunities for solitude or primitive and unconfined recreation. For inventorying wilderness characteristics, BLM will use the “road” definition from FLPMA’s legislative history; the term “road” and “wilderness inventory road” are interchangeable in this guidance. The AWC survey team took a very literal, maintenance-driven approach to road/way determination.

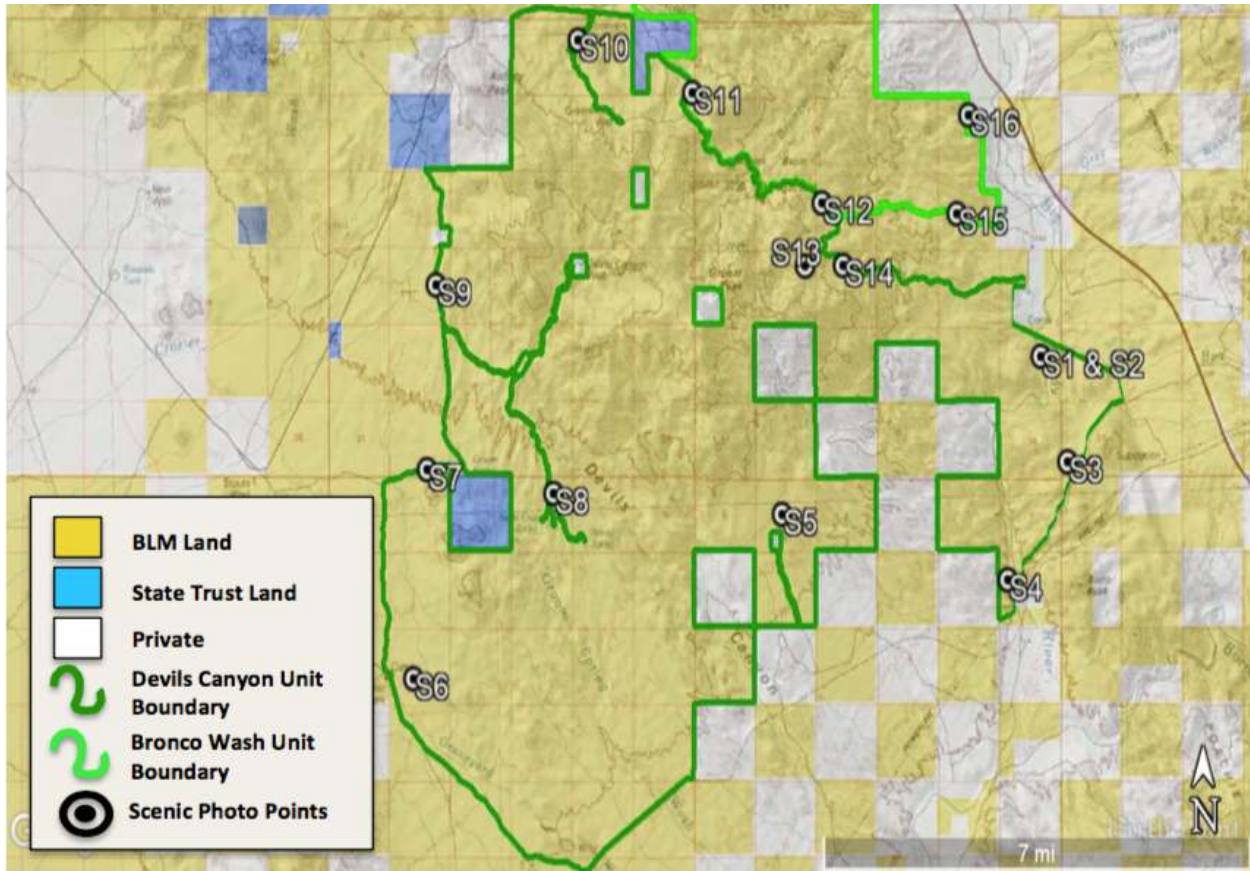
- “Wilderness inventory roads” are routes which have been: (1) *improved and maintained* (when needed), (2) *by mechanical means* (but not solely by the passage of vehicles), (3) *to insure relatively regular and continuous use*.
- “Primitive routes” or “ways” are transportation linear features located within areas that have been identified as having wilderness characteristics and not meeting the wilderness inventory road definition.
- Lands between individual human impacts should not be automatically excluded from the area; no setbacks or buffers allowed; boundaries should be drawn to exclude developed rights-of-way; “undeveloped rights-of-way and similar possessory interests (e.g. as mineral leases) are not treated as impacts to wilderness characteristics because these rights may never be developed”; areas can have wilderness characteristics even though every acre within the area may not meet all the criteria.

Section 1: Overview of the Proposed Lands with Wilderness Characteristics



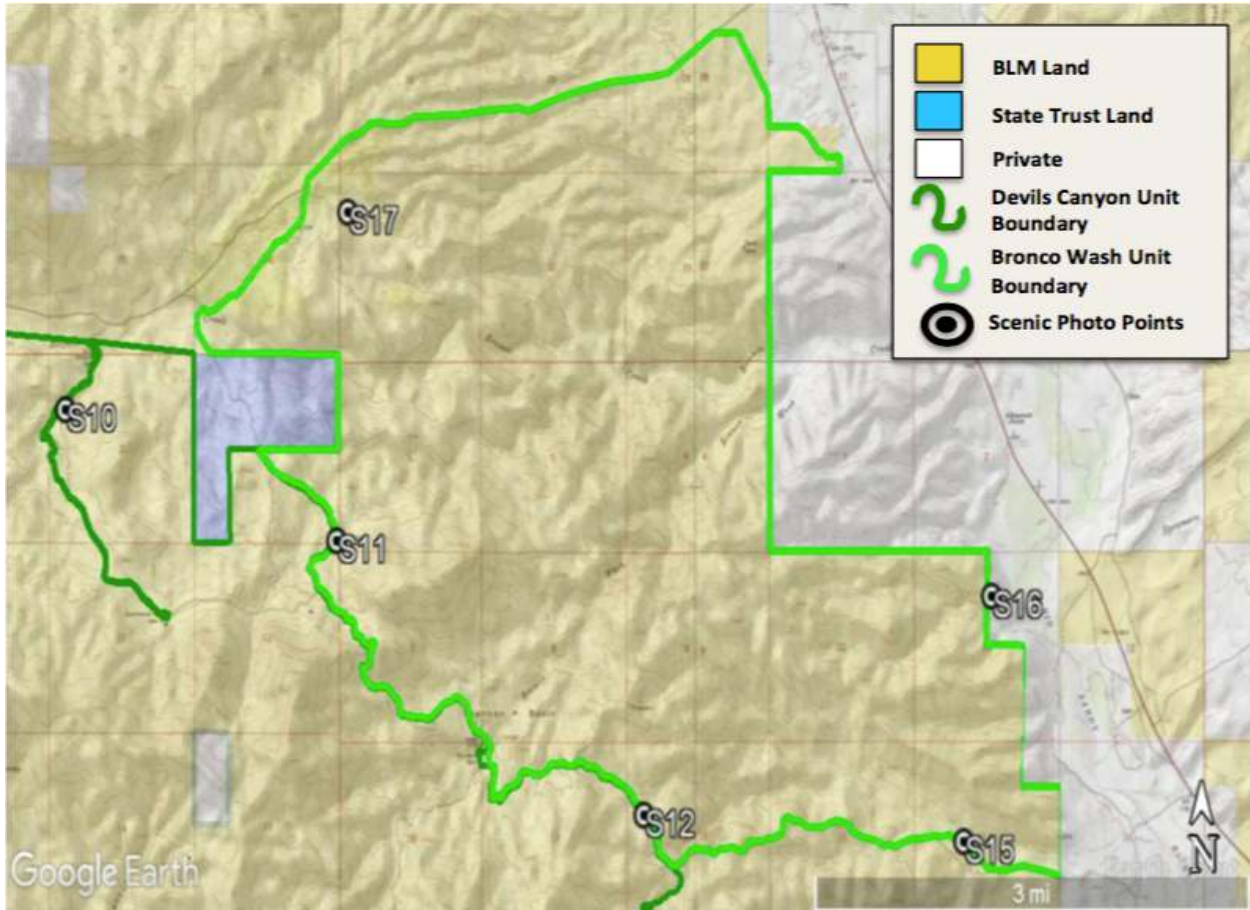
Devils Canyon and Bronco Wash Proposed LWCs Map Summary – These two proposed LWCs encompass outstanding wilderness characteristics along the Sonoran-Mohave desert interface. They contain substantial acreage, are apparently natural, offer outstanding opportunities for solitude and primitive/unconfined recreation, and contain supplemental values. The landscape here consists of desert mountains speckled with charismatic Saguaro cacti and Joshua Trees, large bajadas, extensive yawing canyons with sandy bottoms, granite boulder fields and precipices, and massive views of the Big Sandy River valley. These units offer outstanding opportunities for backpacking, day-hiking, horseback riding, nature study, and in regards to Devils Canyon – paddling.

Devils Canyon and Bronco Wash Proposed LWCs



Devils Canyon Proposed LWC Summary Map – The northern boundary is defined by Chicken Springs Road and associated power lines, state trust land, and another wilderness inventory road. One cherrystem is present here. The eastern boundary is defined by power lines and Signal Road. The southern boundary is defined by parcels of private land and several wilderness inventory roads – one of which is Coyote Wells Road. One cherrystem is present here. The western boundary is defined by wilderness inventory roads, private land, and state trust land. One large cherrystem is present here. Two private inholdings are present within the unit boundaries; no access route exists to them.

Devils Canyon and Bronco Wash Proposed LWCs



Bronco Wash Proposed LWC Summary Map – The northern boundary is defined by Chicken Springs Road and associated power lines and another wilderness inventory road. The eastern boundary is defined by private land and a short wilderness inventory road. The southern boundary is defined by a wilderness inventory road; this route separates the unit from the Devils Canyon proposed LWC. The western boundary is defined by state trust land. No cherrystems or inholdings are present.

Section 2: Documentation of Wilderness Characteristics

Size: Both proposed LWCs meets the minimum size criteria for roadless lands

The Devils Canyon proposed LWC contains approximately 38,450 acres; this substantially succeeds the minimum of 5,000 acres. The Bronco Wash proposed LWC contains approximately 8,800 acres.

Naturalness: The proposed LWCs are affected primarily by the forces of nature

The Devil's Canyon and Bronco Wash proposed LWCs contain biodiversity and ecological community structure representative of the ecosystems that one would expect to see in this region. Here, upland Sonoran and Mohave desert scrubs characterize the landscape – often meshing and forming ecotones, or divided and distributed on the basis of aspect and elevation. Interior chaparral and great basin woodlands are also influential communities on the flora of these proposed LWCs. Characteristic species present here include *Carnegia gigantea*, *Yucca brevifolia*, *Prosopis spp.*, *Opuntia spp.*, *Cylindropuntia spp.*, *Cercidium floridum*, *Rhus ovata*, *Juniperus spp.*, *Larrea tridentata*, *Quercus turbinella*, and *Ambrosia durmosa*. Along washes and in canyons, *Acacia spp.* and *Olneya tesota* are present. The Big Sandy River runs through the eastern portion of the Devil's Canyon proposed LWC; here the river is constricted to a canyon, which raises the water table and results in perennial flow. This creates a riparian corridor defined by *Salix spp.*, *Populus fremontii*, and *Bacharris salicifolia*. *Tamarisk sp.* is present here also, however not in great abundance and it has not crowded out native vegetation. All of these characteristic species described are the proper constituents of the ecosystems present in the region. Not only are these ecosystems themselves in an apparently natural state, they contain minimal human impacts. Few impacts are present within the unit boundaries, all of which are acceptable and substantially unnoticeable.

The majority of the human impacts within the unit boundaries are in the form of primitive ways. All of these ways are unmaintained and serve no purpose, often kept open solely by the passage of vehicles. For examples of these ways, see points **021-022**, **042,047**, **049**, and **067**. Some ways are completely reclaimed and unused, for examples see points **082** and **024**. A small cluster of ways can be seen at points **029-036**; these are associated with an abandoned mine and thus no longer serve a purpose. They are also unmaintained. If access were barred they would quickly revegetate. Other human impacts include a dilapidated run-down corral and windmill at point **082A**, abandoned mines at points **016** and **032**, and an abandoned truck camper at point **015**; all of these impacts are substantially unnoticeable because they are screened by topography and/or vegetation.

Five cherrystems are present in the Devils Canyon proposed LWC. Along the northern boundary a cherrystem excludes two locations containing windmill/wells, water cisterns, and water troughs. Another very short cherrystem excludes a solar-powered well, a water cistern, and a water trough. Along the southern boundary a cherrystem excludes an undeveloped parcel of private land. Along the western boundary, a large cherrystem

excludes a parcel of private land with a windmill/well on it. Another cherrystem heading south off of this cherrystem excludes three springs, Santa Cruz Spring, Little Santa Cruz Spring, and Bonita Spring. None of these cherrystemmed features impact naturalness within the surrounding proposed LWC. No cherrystems exist in the Bronco Wash proposed LWC. Two private inholdings exist within the Devil's Canyon proposed LWC; no access route exists to these inholdings. They are undeveloped, and thus do not impact naturalness in the surrounding proposed LWC. There are no other possible unit-exterior impacts to naturalness.

The proposed LWCs have outstanding opportunities for solitude and/or primitive and unconfined recreation

Solitude

Both of the proposed LWCs offer outstanding opportunities for solitude. These units both contain mountainous terrain, which is dissected with various canyons and sub-drainages. Here, recreationists can wonder amongst massive slopes of desert cobbles and massive cliffs or through sandy washes filled with flood-polished boulders. Examples of these major canyons include Bronco Wash itself and the Big Sandy River canyon. Several portions of both units exhibit granite boulder fields; here, a recreationist can become immersed in mazes of rock and experience solitude (see scenic photo **S7**). All of this complex topography offers outstanding topographic screening and thus solitude.

A few portions of the units offer less topographic screening; however, vegetative screening provides outstanding solitude throughout these portions, among others. The outstanding vegetative screening found in these proposed LWC is result of the growth forms of *Yucca brevifolia*, *Juniperus spp.*, *Cercidium floridum*, *Acacia spp.*, *Prosopis spp.*, *Olneya tesota*, and *Rhus ovata* (see scenic photo **S9**). The riparian corridor along the Big Sandy River of course also offers outstanding vegetative screening (see scenic photo **S2**).

Primitive and Unconfined Recreation

These proposed LWCs offer outstanding opportunities for primitive and unconfined recreation.

Cross-country travel in both units offers outstanding opportunities for backpacking, day-hiking, and horseback riding. Although vegetative screening is excellent, it is not due to density – but instead growth form, and thus, thick vegetation is not an issue in regards to moving around the landscape. Furthermore, although the unit is topographically complex, it is often not overly steep, which allows for easier cross-country travel. There are a variety of washes and canyons that make for excellent routes in both units, most however are unnamed. However, Bronco Wash and Bronco Creek are named, and are outstanding canyons that would make great day-hiking routes. In the Devil's Canyon proposed LWC an excellent route would be navigating one of many drainages to the summit of Groom Creek for an outstanding view of the Big Sandy River valley. Day-hikes and horseback riding along the Big Sandy River offers outstanding, regionally unique opportunity to experience riparian ecosystems and a perennial stream.

Devils Canyon and Bronco Wash Proposed LWCs

These proposed LWCs offer outstanding opportunities for rock climbing, scrambling, and proper bouldering. There are scattered outcrops within the units that would interest a traditional climber searching for first ascents (see scenic photo **S7**). Most of the potential lies in scrambling and proper bouldering. Granite boulders are common across both proposed LWCs (see scenic photo **S3**), some in massive piles, others cover the slopes, and others rest alone on the bajadas. Proper bouldering routes could easily be developed here. Other igneous and metamorphic rock outcrops are present in the unit also, which only offer opportunities for rock scrambling.

The Devils Canyon proposed LWC offers outstanding opportunities for canoeing and kayaking. Although the Big Sandy River may not have a perennial base flow with high enough CFS (cubic feet per second) to paddle all the time, it occupies a massive watershed and is prone to rising with any amount of precipitation. A wilderness inventory road provides access to where the river enters into the proposed LWC; this would make a great put-in. From here a paddler could paddle through the proposed LWC, and continue down river to Alamo Lake. This is not a traditional run, however it is extremely possible, and would offer Class I-II whitewater. Designation of this proposed LWC would preserve the wildness of these portions of this paddling run.

These units occupy an ecotone of Mohave and upland Sonoran desert scrubs, and thus offer outstanding opportunities for nature-study. Eco-tones can be exciting, insightful places for nature-study because they are inherently areas of higher biodiversity and are often novel. Here, not only do unique plant communities overlap with one another, but as do their associated fauna. Thus, this is not only a place to observe and study a large variety of species and biomes, but also novel species interactions. Furthermore, the Devil's Canyon proposed LWC contains endangered Cottonwood-Willow riparian gallery forests; here, one can study species not commonly found elsewhere. Designation of this proposed LWC would protect this endangered habitat.

Supplemental Values

The unit is home to sensitive species of concern listed by Arizona Game and Fish

The Heritage Data Management System, administered by Arizona Game and Fish Department, lists special-status species by USGS quadrangle. These lists can be found at www.habimap.org¹. The proposed LWC's covers portions of four quadrangles, titled Greenwood Peak, Groom Spring, Aubrey Peak, and Wikieup. Twenty-five species of concern are listed in total. The conservation of these sensitive species would be improved if this area were managed as an LWC.

¹ AZGFD. Habimap. Date accessed: November 13, 2017. Online tool available at: www.habimap.org.

Scenic Photos



Scenic Photo S1: Looking upstream along the Big Sandy River. Hiking through this riparian corridor surrounded by the Sonoran desert is a truly enjoyable, contrast-filled experience. The perennial surface flow found on this stretch of the Big Sandy River is rare in the desert.



Scenic Photo S2: Looking upstream along the Big Sandy River. The Cottonwood-Willow gallery forests seen here are rare ecosystems and offer habitat for a breadth of wildlife, making them excellent places for nature study.

Devils Canyon and Bronco Wash Proposed LWCs



Scenic Photo S3: Looking NE across granite boulders in the Devils Canyon proposed LWC. Opportunities for bouldering are abundant here.



*Scenic Photo S4: Looking over the Big Sandy River canyon. Topographic screening is abundant here. *Carnegia gigantea*, *Cercidium floridum*, and *Cylindropuntia spp.* in the foreground contrast the riparian corridor in the background; all species assemblages offer vegetative screening.*

Devils Canyon and Bronco Wash Proposed LWCs



Scenic Photo S5: Looking north towards Groom Peak in the Devils Canyon proposed LWC. Several canyons dissect this peak and would make excellent backpacking routes. The *Yucca brevifolia* and *Carnegiea gigantea* exhibit the eco-tone of Sonoran and Mohave deserts here.



Scenic Photo S6: Looking across the bajada in the southern regions of the Devils Canyon proposed LWC. Here, *Ambrosia dumosa*, *Cylindropuntia spp.*, and *Yucca spp.* dominate the landscape.

Devils Canyon and Bronco Wash Proposed LWCs



Scenic Photo S7: The granite outcrops and boulders found here, with intermittent dells, is reminiscent of Joshua Tree National Park. The rock here offers outstanding opportunities for bouldering and rock scrambling. A few opportunities for traditional climbing exist. This rock also offers outstanding solitude via screening.



Scenic Photo S8: Looking towards the more mountainous portions of the Devils Canyon proposed LWC. *Juniperus spp.*, *Yucca brevifolia*, and *Fouqueria splendens* characterize the slopes in the foreground.

Devils Canyon and Bronco Wash Proposed LWCs



Scenic Photo S9: *Yucca brevifolia* and *Juniperus spp.* characterize the floras of much of both proposed LWCs. These species provide outstanding vegetative screening for solitude.



Scenic Photo S10: Looking E in the Devils Canyon proposed LWC. The granite outcrop featured here offers outstanding opportunities for traditional climbing on excellent rock quality.

Devils Canyon and Bronco Wash Proposed LWCs



Scenic Photo S11: Looking E in the Bronco Wash proposed LWC from the unit boundary road separating it from Devils Canyon proposed LWC. Topographic screening here is abundant, as are opportunities for rock scrambling. The dilapidated corral in the foreground provides wilderness character because natural processes have largely reclaimed it.



Scenic Photo S12: Looking N into the Bronco Wash proposed LWC. Here, gentle slopes make cross-country travel manageable for horseback riding.

Devils Canyon and Bronco Wash Proposed LWCs



Scenic Photo S13: Looking along an extensive canyon in the Devils Canyon proposed LWC. Topographic screening is plentiful here. This canyon would make an excellent day-hike or backpacking route.



Scenic Photo S14: Looking W into the Devils Canyon proposed LWC. Here, topographic and vegetative screenings are plentiful. Upland Sonoran desert species characterize the landscape.

Devils Canyon and Bronco Wash Proposed LWCs



Scenic Photo S15: Looking up a wash in the Bronco Wash proposed LWC. Washes like this are common in both proposed LWCs and make excellent hiking, backpacking, or horseback riding routes.



Scenic Photo S16: Looking W in the Bronco Wash proposed LWC. Upland Sonoran desert scrub characterizes the variable topography seen here; solitude is plentiful.

Devils Canyon and Bronco Wash Proposed LWCs



Scenic Photo S17: Looking SE in the Bronco Wash proposed LWC. This is a truly wild landscape; here, a recreationist can wander between hills and canyons, surrounded by desert vegetation and rock outcroppings within a state of solitude.

Section 3: Maps and Description of the Unit Boundary, Routes, and Impacts

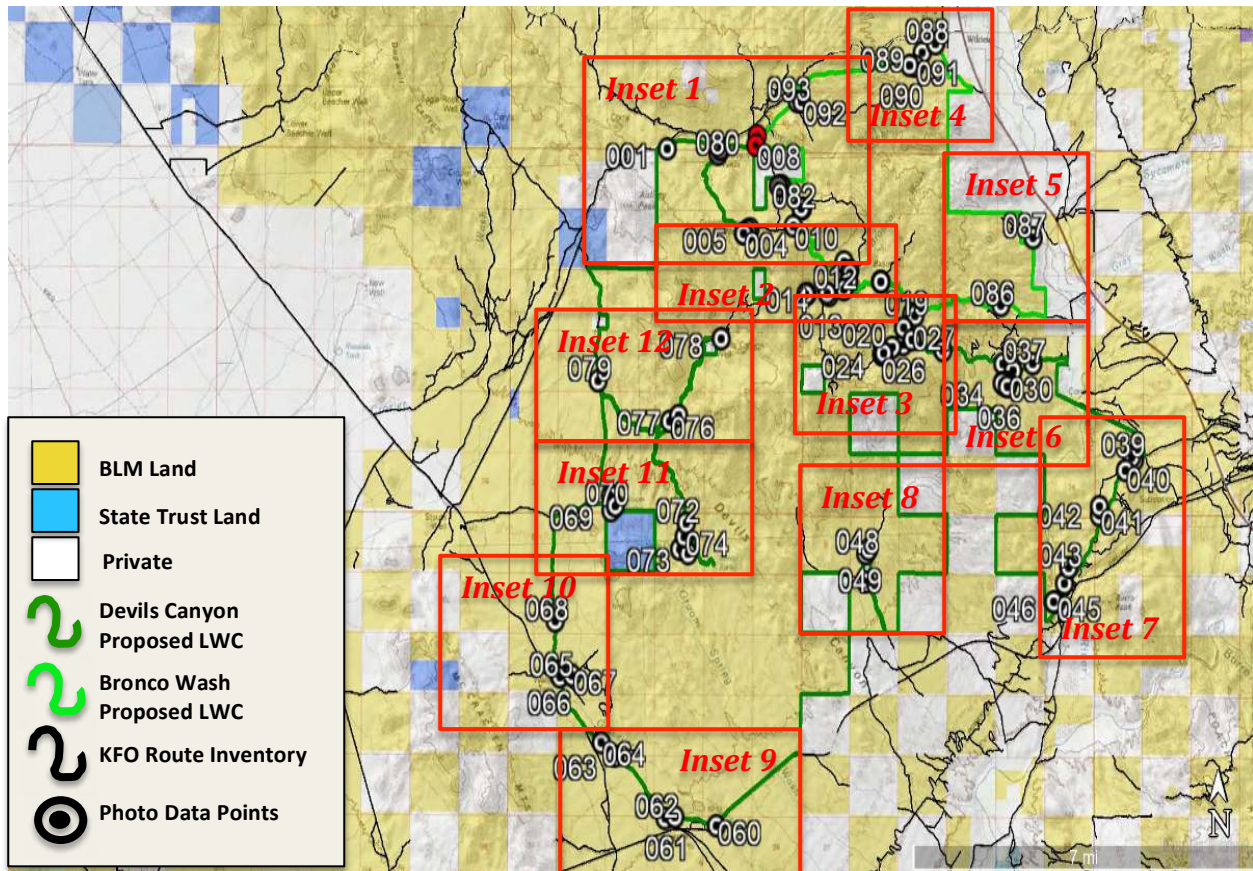
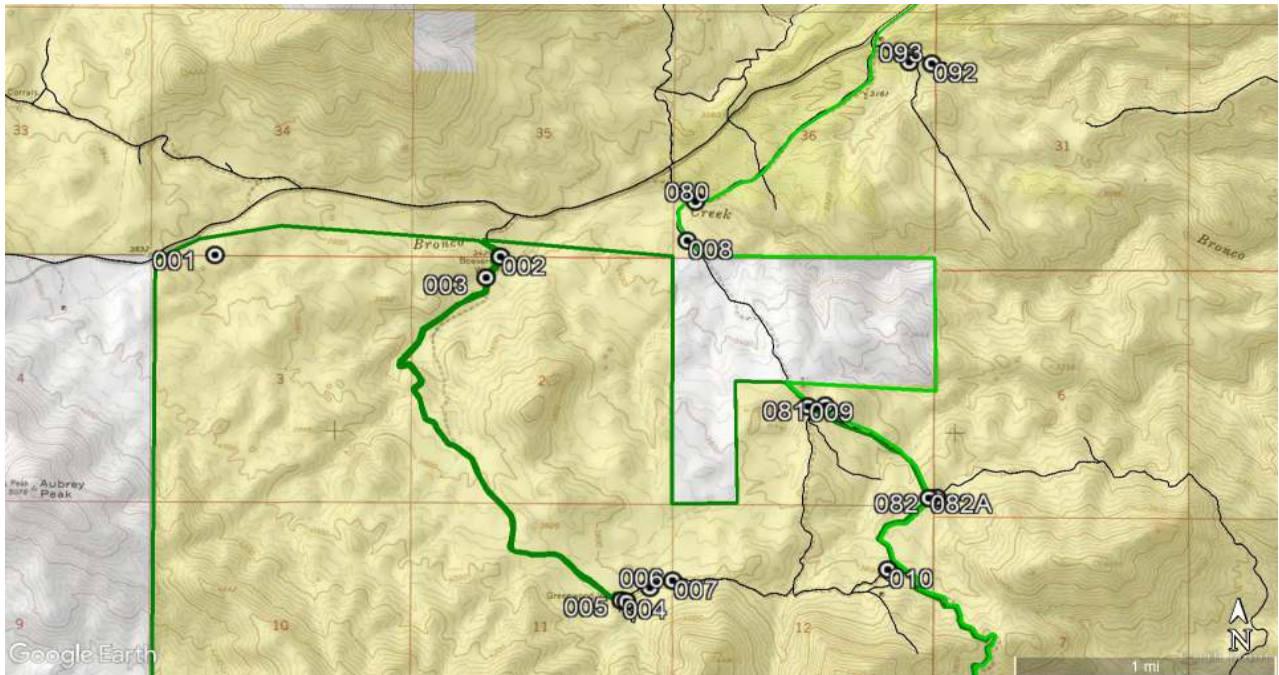


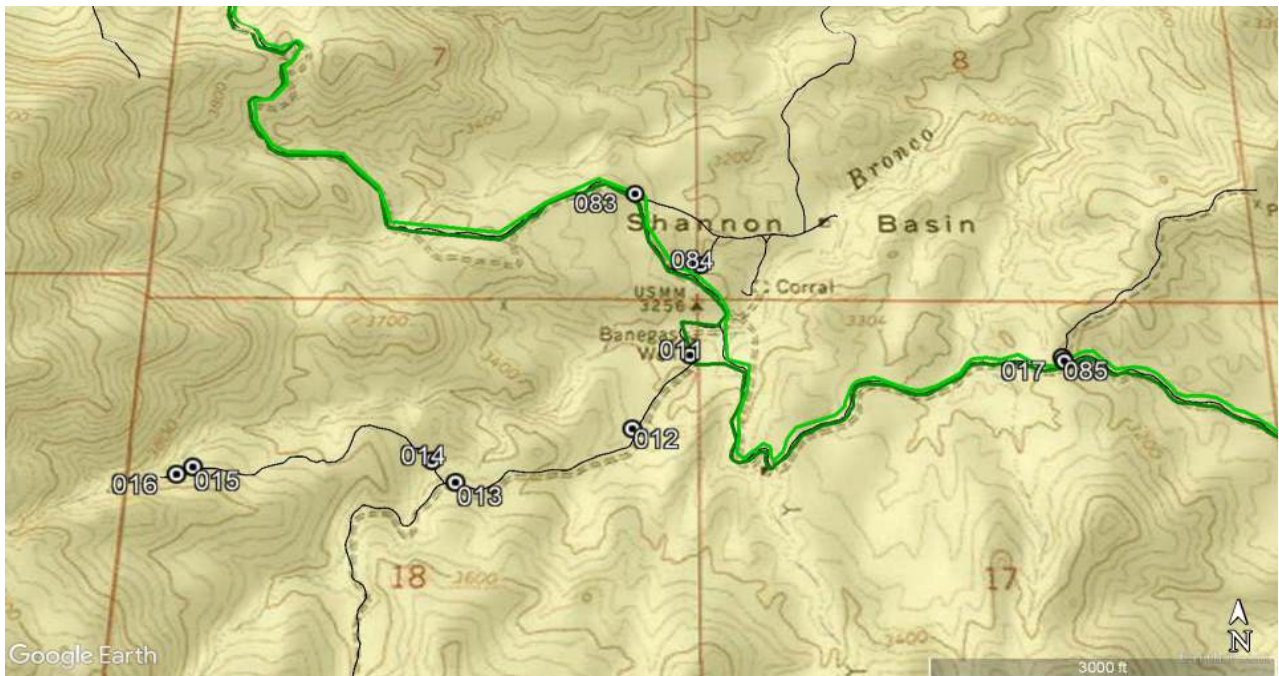
Photo Data Point Locations and Key to Inset Maps - This map is meant to be used locate where field survey data was collected and as a key to proceeding inset maps. Following this key on page 22, twelve inset maps can be found which offer increased clarity on specific photo point locations and their context. The layer titled 'KFO Route Inventory' reflects spatial data acquired from the BLM regarding the Kingman Field Office's route inventory. 'Photo data points' reflect location of qualitative data collected during the field survey, viewable in *Section 4* of this proposal.

Inset Maps with Photopoint Locations

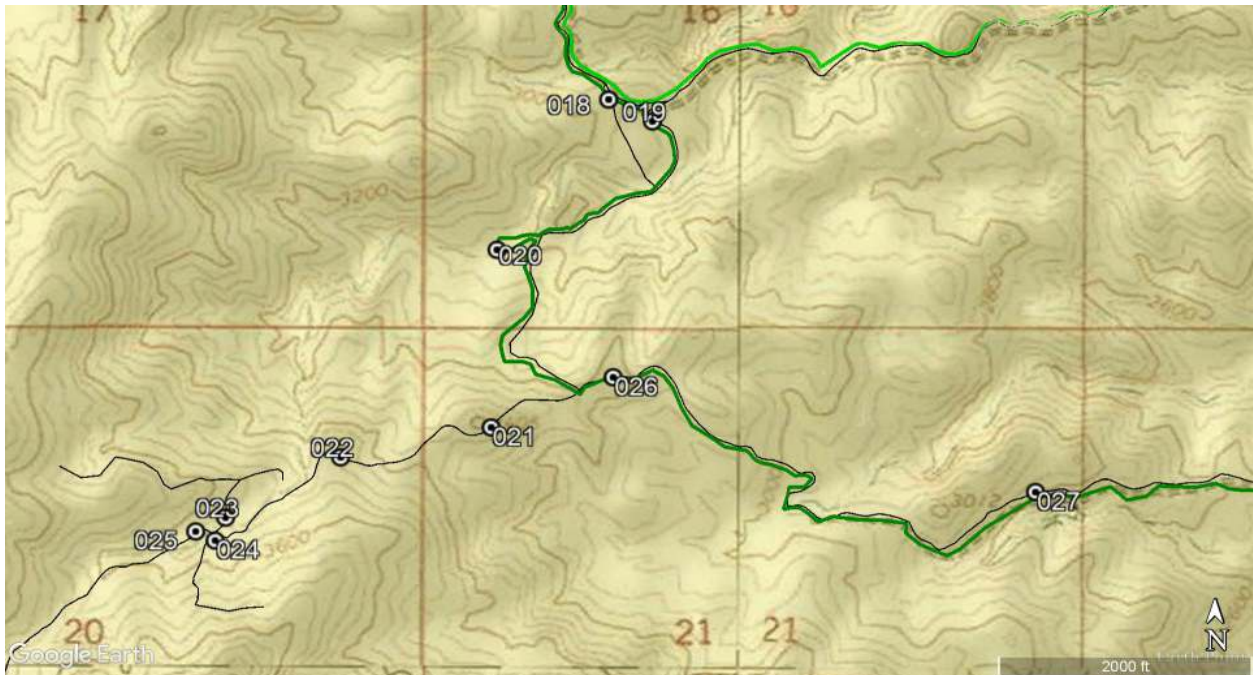
Maps 1 & 2



Inset 1: 001 and 002 shows cherrystemmed windmills/wells. 003 shows a cherrystemmed route leading to a windmill/well. 005 shows an acceptable impact. 080 and 008 show unit boundaries. 004, 006, 007, 081, 009, 010, and 082 show primitive ways.



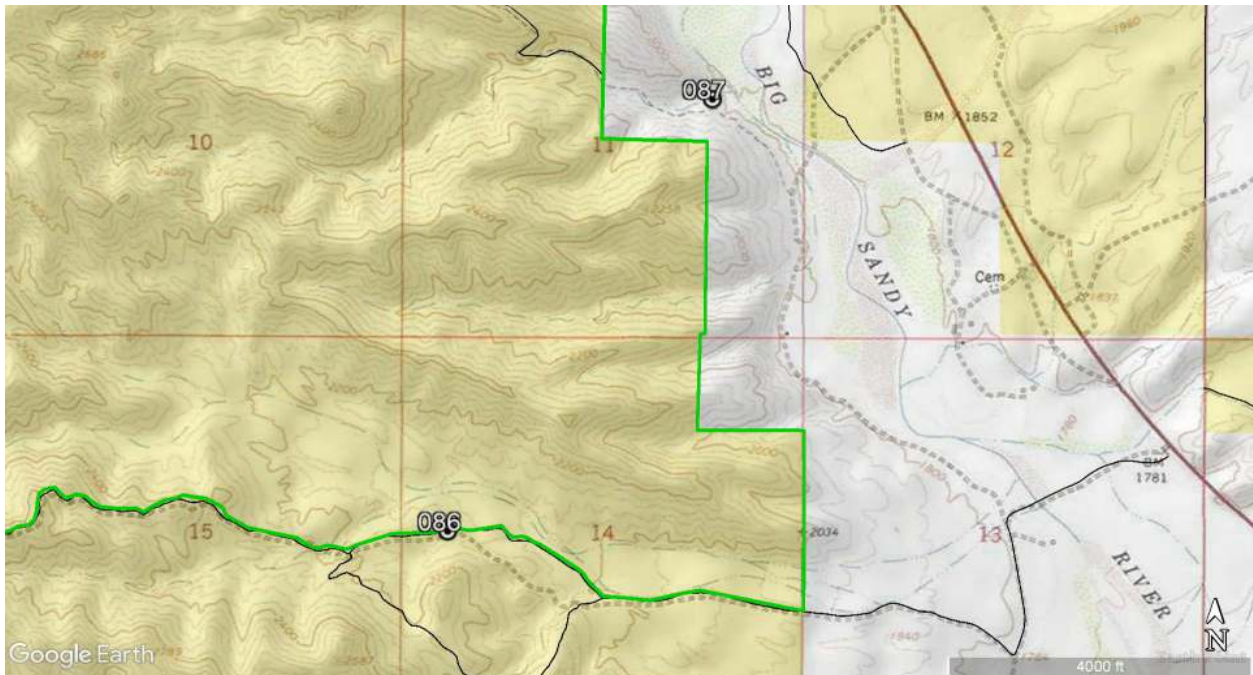
Inset 2: 083-085, 012-014, and 017 show primitive ways. 015 and 016 show acceptable impacts. 011 shows an excluded windmill/well. 085 shows a wilderness inventory road.



Inset 3: 019, 026, and 027 show the unit boundary. 020 shows a cherrystemmed solar-well and water cistern. 018 and 021-025 show primitive ways.



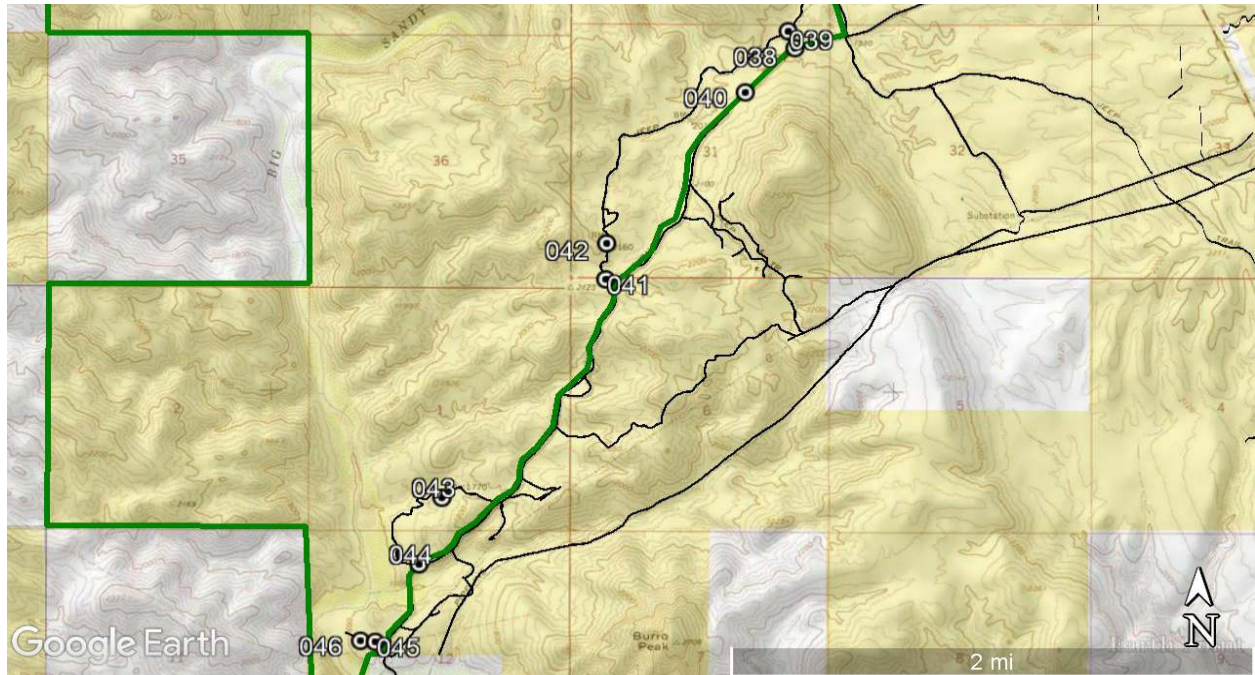
Inset 4: 088 and 089 show wilderness inventory roads. 090 shows a primitive way. 091 shows a dilapidated stockpond.



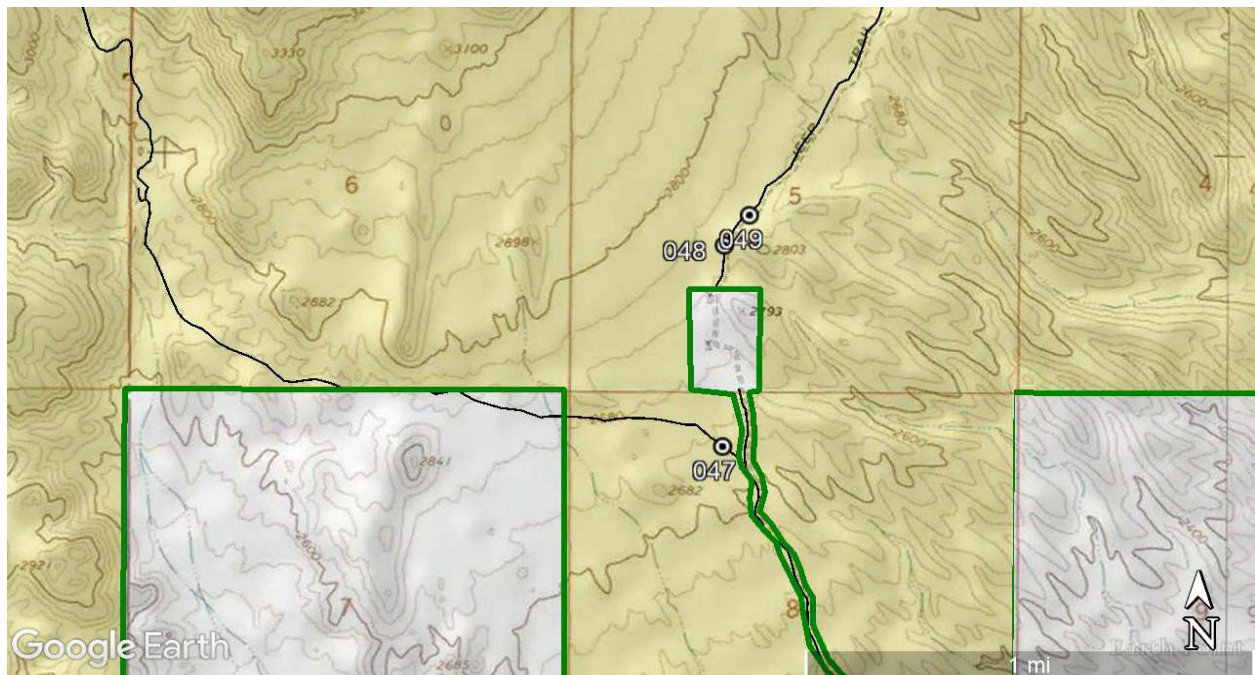
Inset 5: 086 shows the unit boundary. 087 shows a primitive way.



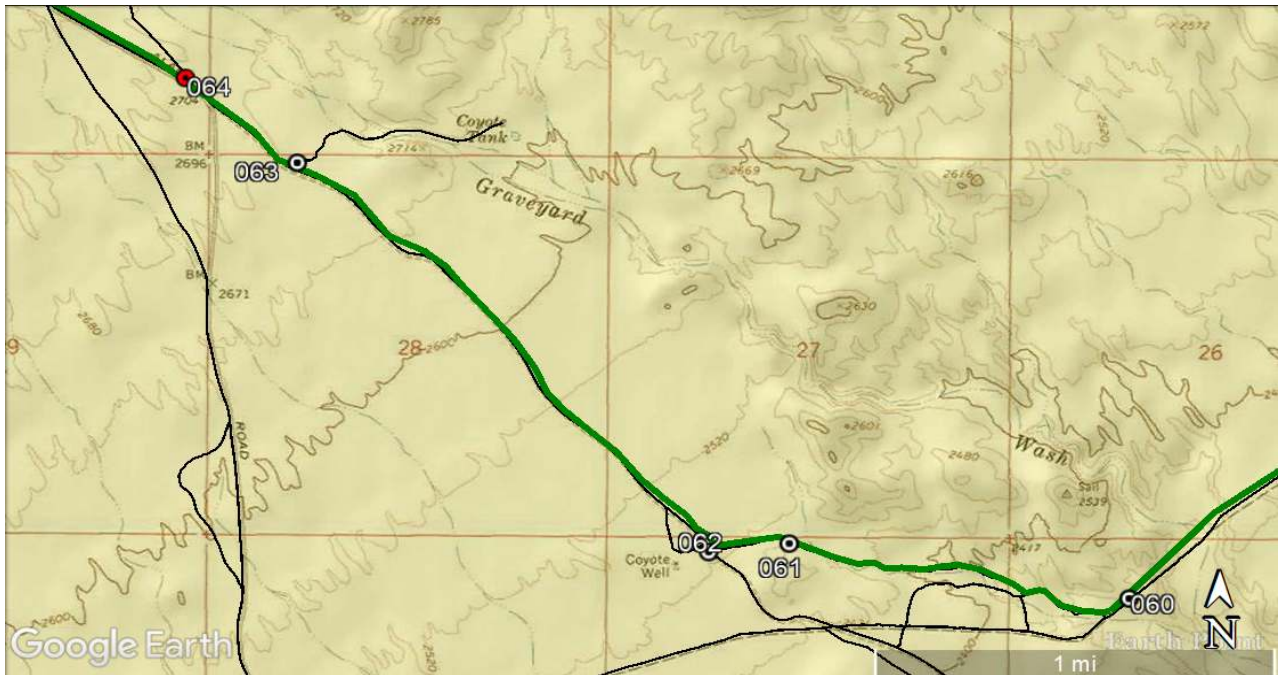
Inset 6: 037 shows the unit boundary. 028 shows a primitive way. 029-036 show a network of primitive ways.



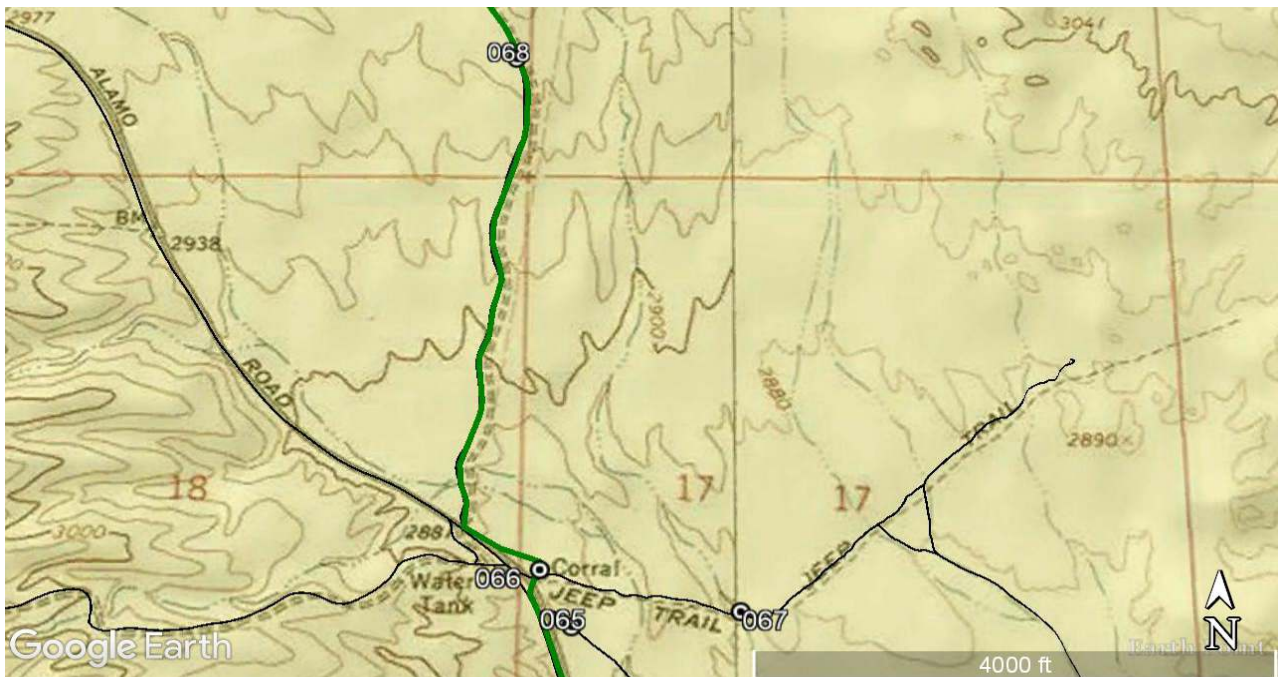
Inset 7: 040 shows Signal Road – the unit boundary. 038-039 and 041-045 show primitive ways. 046 shows an acceptable impact.



Inset 8: 047 and 049 show primitive ways. 048 shows an acceptable impact. A cherrystem to private land is also featured here.



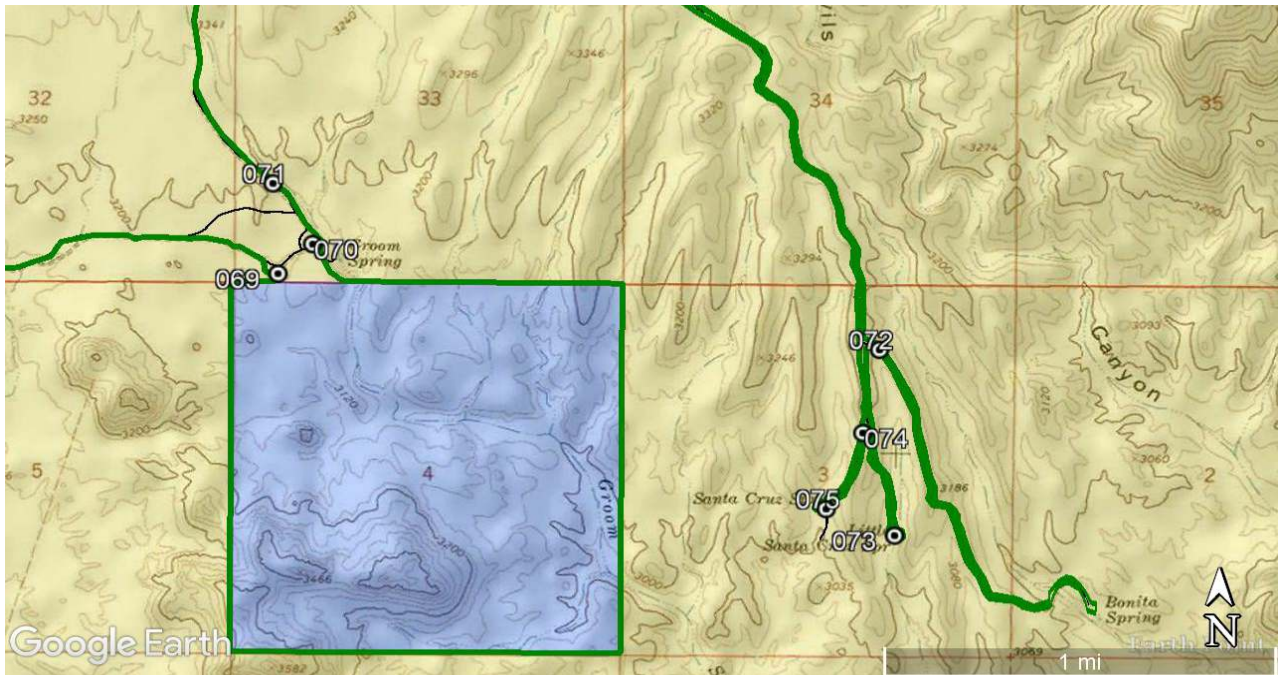
Inset 9: 060-062 show wilderness inventory roads. 063 and 064 show reclaimed and unused ways.



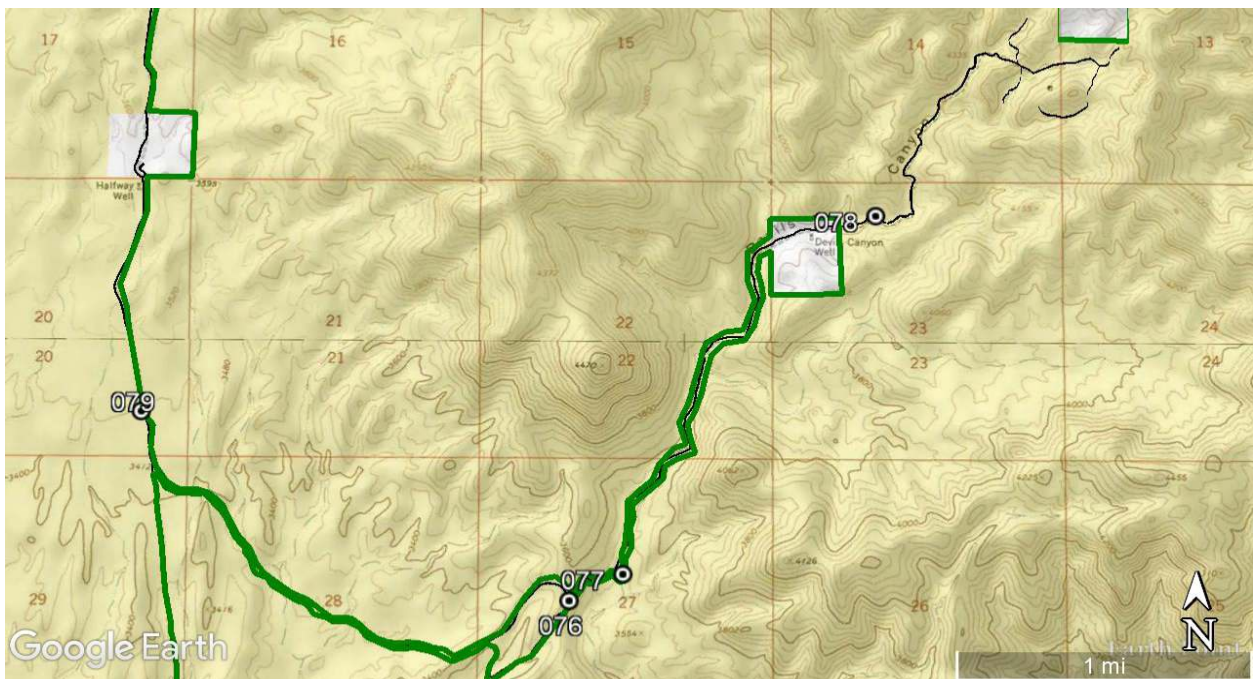
Inset 10: 066 shows an excluded corral. 065 and 067 show primitive ways. 068 shows a wilderness inventory road.

Inset Maps with Photopoint Locations

Maps 11 & 12



Inset 11: 069 shows an access route to state trust land. 070 shows an excluded corral. 071 shows a wilderness inventory road. 072 and 074 show cherrystemmed routes. 073 shows one of three cherrystemmed springs; which are Santa Cruz Spring, Little Santa Cruz Spring, and Bonita Spring. 075 shows a primitive way.



Inset 12: 079 shows a wilderness inventory road. 076 and 077 show cherrystemmed routes. 078 shows a reclaimed and unused way.

Narrative Description of the Proposed LWC Boundary and Vehicle Routes

Devils Canyon Proposed LWC

Northern Boundary: Points **001-037**; wilderness inventory roads, power lines, private land. Two cherrystems.

- **001** shows a cherrystemmed windmill/well.
- **002** shows a cherrystemmed windmill/well.
- **003** shows a cherrystemmed route which provides access to the windmill/well at **002** and another windmill/well at the end of the cherrystem.
- **004** shows an abandoned quarry/prospect near the **003** cherrystem. It is substantially unnoticeable because it is screened by topography.
- **005** shows a primitive way; it is unconstructed, without maintenance, and without purpose. It is kept open solely by the passage of vehicles.
- **006-7** show a primitive way.
 - **006** shows severe erosion, which has barred access to the rest of the route.
 - **007** shows the rest of the route; it is unmaintained and without purpose. The state of this portion of the route (unmaintained: vegetation growing in the route) provides evidence that the erosion at **006** has been present for a substantial amount of time.
 - **009-010** show other routes which could access this primitive way. They are both unmaintained and without purpose. They are kept open solely by the passage of vehicles.
- **008** shows a wilderness inventory road. It is constructed, serves multiple purposes, and shows evidence of old maintenance.
- **011** shows an excluded windmill/well along the unit boundary.
- **012-016** and **021-025** show a network of primitive ways. All of these ways have no apparent purpose.
 - **012-013** show the condition of one end of a primitive way: unmaintained. **021**, **022**, and **025** show the other end of this primitive way: unmaintained. The way is revegetating.
 - **014** shows a subsequent way; it is nearly completely reclaimed & unused. Two acceptable impacts exist along this route:
 - **015** shows an abandoned pickup truck camper. It is dysfunctional. It minimally affects naturalness because it is screened by topography.
 - **016** shows an abandoned mine. It minimally affects naturalness because it is screened by topography.
 - **023** and **024** show subsequent primitive ways. They are reclaimed and unused. They minimally affect naturalness.
 - It is important to note that subsequent way along this network of primitive ways *almost* provides access to a private inholding; however, it doesn't connect to the private inholding.

Devils Canyon and Bronco Wash Proposed LWCs

- **017** shows a wilderness inventory road; it is constructed, maintained, and with purpose.
- **018** shows a reclaimed and unused primitive way; it minimally affects naturalness.
- **019** shows a wilderness inventory road; it is constructed, maintained, and with purpose.
- **020** shows a cherrystemmed solar-well, a cistern, and a water trough.
- **026** and **027** show a wilderness inventory road. It is constructed and with purpose.
 - **026** shows no maintenance, but it is likely as needed.
 - **027** shows evidence of old maintenance.
- **028** shows a primitive way; it is unmaintained and without purpose. It dead-ends at nothing.
- **029-036** show a networks of primitive ways associated with an abandoned mine.
 - **029** shows the best section of a route (BLM Route 7375); this route connected to a network of unmaintained, unconstructed, purposeless primitive ways. **030** shows another portion of this route; here, the route is highly eroded. Thus, there seems to have been no maintenance. This route serves no purpose. It is kept open solely by the passage of vehicles.
 - **031** shows a primitive way. It is constructed, but is unmaintained and serves no purpose.
 - **032** shows an abandoned mine/quarry. This was likely the old purpose for these routes, however it is no longer in use. It minimally affects naturalness, because it is screened by topography.
 - **033** and **034** show primitive ways, which show no evidence of use, are unmaintained, and serve no purpose. They minimally affect naturalness.
 - **035** shows a reclaimed and unused way. It minimally affects naturalness.
 - **036** shows an unmaintained, purposeless primitive way. It minimally affects naturalness and is kept open solely by the passage of vehicles.
- **037** shows a wilderness inventory road; it is the unit boundary. It is constructed, maintained, and serves multiple purposes.
- The portion of this northern boundary east of the Big Sandy River is defined by power lines.

Eastern Boundary: Points **039-046**; wilderness inventory roads, power lines, and private land.

- **038** shows a primitive way. This route is unmaintained and without purpose. Also, access has been barred due to blading debris from Signal Road.
- **040** shows Signal Road. It is a wilderness inventory road.
- **039** and **041-42** show a primitive way.
 - **041** shows the best section of the route; it is constructed, but is unmaintained and serves no purpose. It is kept open solely by the passage of vehicles.
 - **039** shows one end of this primitive way. It is unmaintained and serves no purpose.
 - **042** shows the other end of this primitive way closer to point **041**; here, it is unmaintained and without purpose. The route is being revegetated.
- **043** and **044** show a primitive way; it serves no purpose and is unmaintained. It is kept open solely by the passage of vehicles. It minimally affect naturalness.

Devils Canyon and Bronco Wash Proposed LWCs

- At **044** the route is completely undetectable.
- **045** show an unmaintained, purposeless primitive way. It is kept open solely by the passage of vehicles.
- **046** shows a dysfunctional, dilapidated corral. It minimally affects naturalness.

Southern Boundary: Points **047-067**; wilderness inventory roads and private land. One cherrystem.

- **047** shows an unmaintained, purposeless primitive way. It is kept open solely by the passage of vehicles.
- **048** shows dilapidated, unmaintained water cisterns. They minimally affect naturalness and are substantially unnoticeable because they are screened by topography and vegetation.
- **049** shows a primitive way continuing beyond cherrystemmed private land. It is unmaintained and purposeless. It is fairly eroded.
 - A cherrystem exists prior to this point. The cherrystem provides access to a small parcel of private land.
- **060-62** show wilderness inventory roads. They are all constructed and with purpose.
 - **060** follows a natural gas pipeline. Maintenance is likely if needed.
 - **061** follows a water line. Shows evidence of maintenance.
 - **062** is Coyote Wells Road.
- **063-065** show reclaimed and unused primitive ways. They minimally affect naturalness.
- **066** shows a corral excluded along the unit boundary.
- **067** shows a primitive way; it is user-created, unmaintained, and without purpose. It is kept open solely by the passage of vehicles.

Western Boundary: Points **068-079**; wilderness inventory roads, private land, and state trust land. Two cherrystems.

- **068, 071, and 079** show a wilderness inventory road.
- **069** shows an access route to state trust land. It is a wilderness inventory road, and part of the unit boundary.
- **070** shows an excluded corral. It is a boundary element.
- **072-074** show cherrystemmed features associated with several enclosed springs.
 - **072** shows a cherrystemmed access route to Bonita Spring.
 - **073** shows Little Santa Cruz Spring; it is excluded along a cherrystem.
 - **074** shows a cherrystemmed access route to Santa Cruz Spring.
- **075** shows a primitive way. It is unconstructed, unmaintained, and serves no purpose. It eventually enters a natural wash. It is kept open solely by the passage of vehicles.
- **076-77** show cherrystemmed routes, which provide access to private land.
- **078** shows a reclaimed and unused way. In the Kingman Field Office route inventory, this route almost reaches a parcel of private land; however, it doesn't actually connect to the private land and thus doesn't provide private land access.

Bronco Wash Proposed LWC

Western/Southern Boundary: Points **008, 017, and 080-086**; wilderness inventory road and private land.

- **080** shows a wilderness inventory road. It is maintained, constructed, and with purpose.
- **008** shows a wilderness inventory road. It is maintained, constructed, and with purpose. It separates Bronco Wash and Devils Canyon proposed LWCs.
- **081** shows a primitive way; it is unmaintained and serves no purpose. It is kept open solely by the passage of vehicles.
- **082** show a reclaimed and unused way. All subsequent ways are considered to be the same.
- **082A** shows a dilapidated, unmaintained corral and windmill. This is an acceptable impact, as it is screened by vegetation and topography and thus substantially unnoticeable.
- **083-085** show reclaimed and unused ways. They minimally affect naturalness.
- **017** and **086** show a wilderness inventory road; it is constructed, maintained, and serves multiple purposes.

Eastern Boundary: Points **087-088**; private land and a wilderness inventory road.

- **087** shows a primitive way; it follows a natural wash. It is unconstructed, unmaintained, and serves no purpose.
- **088** shows a wilderness inventory road.

Northern Boundary: Points **089-093**; Chicken Springs Road and associated power lines.

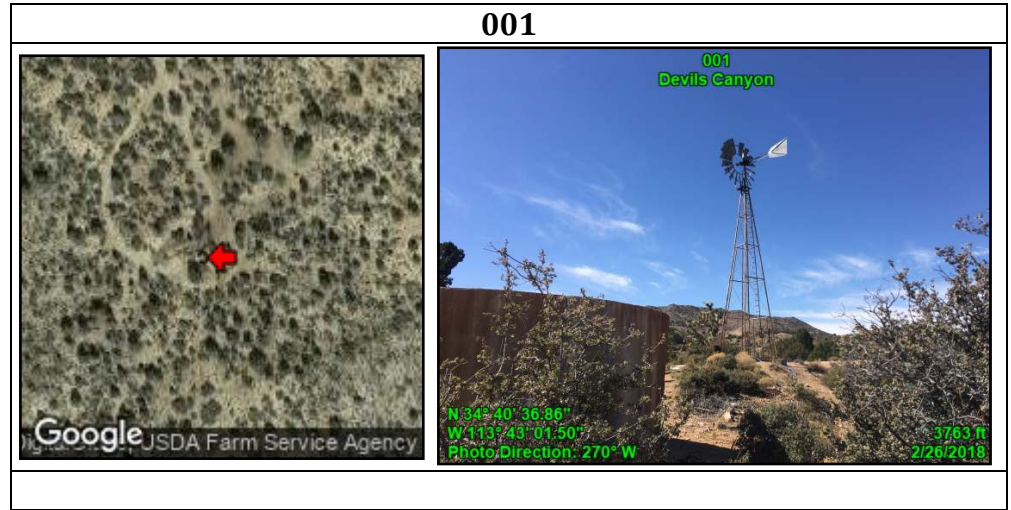
- **089** shows Chicken Springs Road – a wilderness inventory road. The unit boundary here varies from the road to power lines following its trajectory.
- **090** shows a primitive way which lacks evidence of construction and is unmaintained. It also lacks purpose; this is evident in the blown-out, overgrown stockpond at its terminus (Point **091**).
- **092-093** show primitive ways which are unmaintained and without purpose. They are kept open solely by the passage of vehicles.

This ends the narrative discussion.

Section 4: Photopoint Data

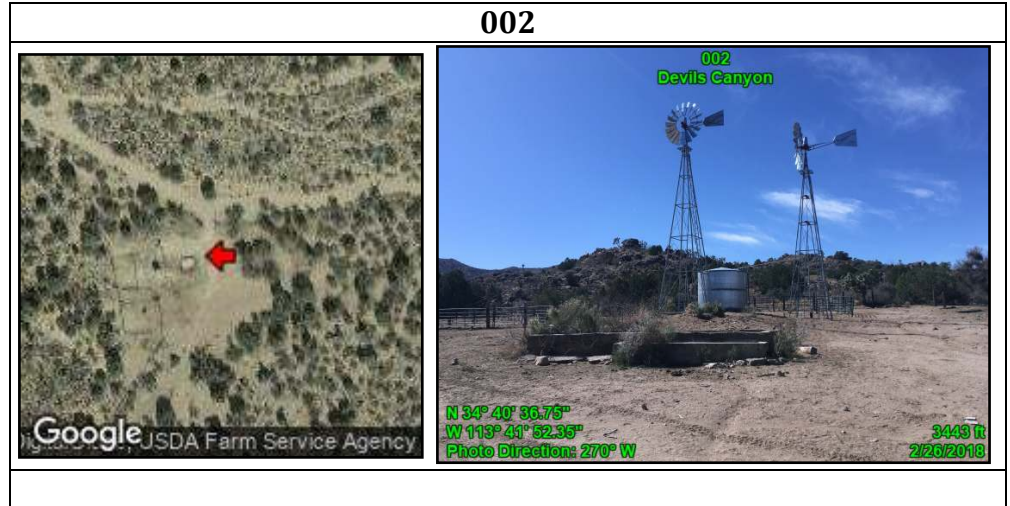
This section contains the photos and associated data tables for each point displayed on the inset maps and described in the boundary description. Data are presented in numbered order as they appear in the boundary description. The table associated with each point includes notes recorded in the field using GeoJot, supporting the rationale for including or excluding the feature in the unit. The associated map shows satellite imagery of the exact location and direction the photo was taken in. Maps, photos, and tables were produced in GeoJot Core.

Attributes	
Point	001
Title	
Unit name	Devils Canyon
Route: name	N/A
Route:	N/A
Construction	
Route:	N/A
Improvements	
Route: Use	N/A
Route: Purpose	N/A
Route:	N/A
Determination	
Other notes	Cherrystem
Route:	N/A
Maintenance	
Feature	Windmill/Well
Feature notes	None
Feature Class	Boundary Element

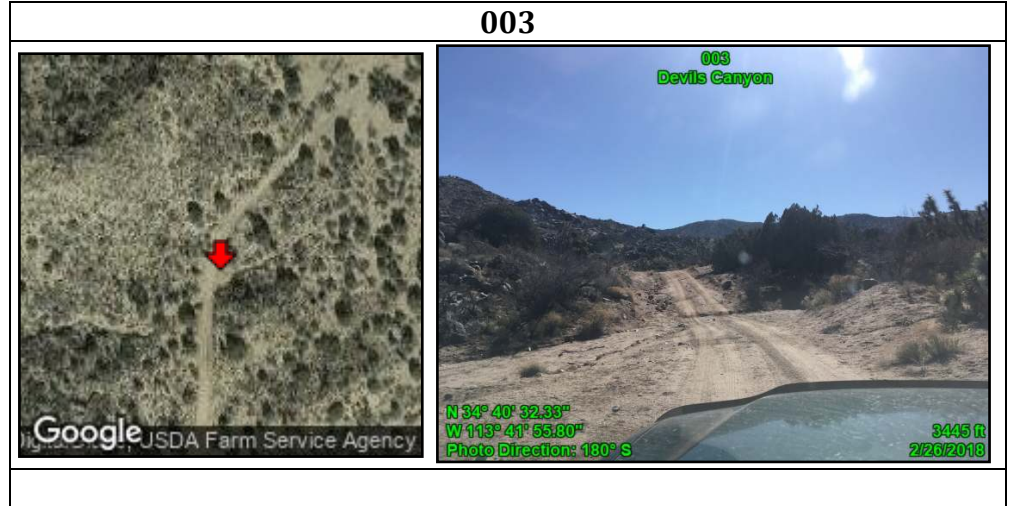


Devils Canyon and Bronco Wash Proposed LWCs

Attributes	
Point	002
Title	
Unit name	Devils Canyon
Route: name	N/A
Route:	N/A
Construction	
Route:	N/A
Improvements	
Route: Use	N/A
Route: Purpose	N/A
Route:	N/A
Determination	
Other notes	Exclude this impact
Route:	N/A
Maintenance	
Feature	Windmill/Well and Corral
Feature notes	None
Feature Class	Boundary Element



Attributes	
Point	003
Title	
Unit name	Devils Canyon
Route: name	7369
Route:	Bladed
Construction	
Route:	None
Improvements	
Route: Use	2-WD Vehicles
Route: Purpose	Well access
Route:	Road
Determination	
Other notes	Cherrystem
Route:	Old evidence - 3-5 years ago
Maintenance	
Feature	Typical Condition of Route
Feature notes	None
Feature Class	Boundary Element



Devils Canyon and Bronco Wash Proposed LWCs

Attributes

Point	004
Title	
Unit name	Devils Canyon
Route: name	N/A
Route:	N/A
Construction	
Route:	N/A
Improvements	
Route: Use	N/A
Route: Purpose	N/A
Route:	N/A
Determination	
Other notes	None
Route:	N/A
Maintenance	
Feature	Quarry
Feature notes	Not in use
Feature Class	Impact: Acceptable

004



Attributes

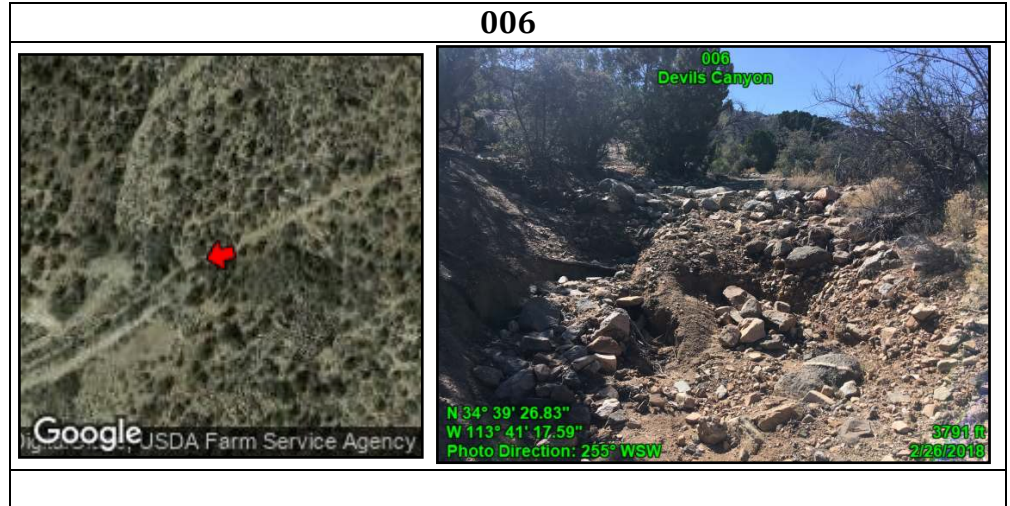
Point	005
Title	
Unit name	Devils Canyon
Route: name	None
Route:	No evidence/user-created
Construction	
Route:	None
Improvements	
Route: Use	2-WD Vehicles
Route: Purpose	No apparent purpose
Route:	Way
Determination	
Other notes	Kept open solely by passage of vehicles
Route:	None
Maintenance	
Feature	Typical Condition of Route
Feature notes	Feature minimally affects naturalness
Feature Class	Primitive Route

005

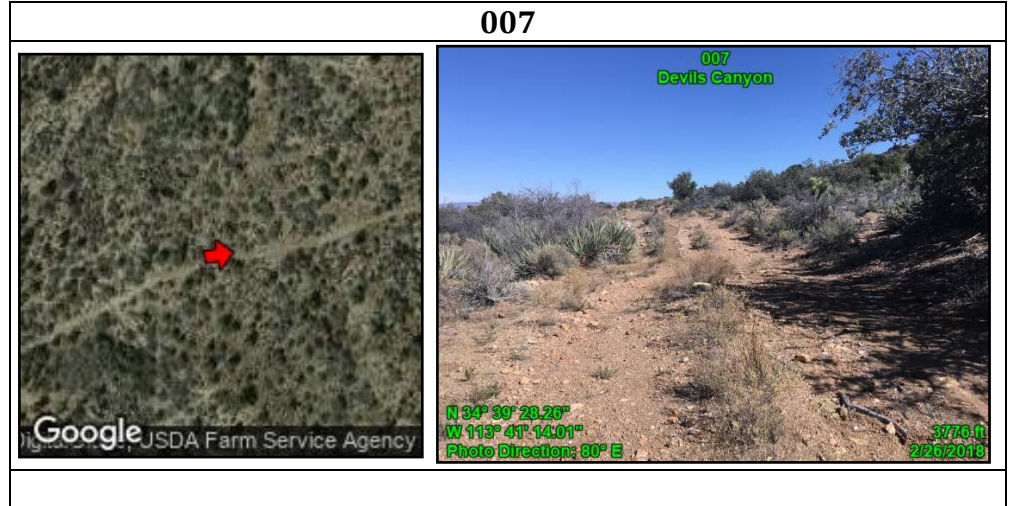


Devils Canyon and Bronco Wash Proposed LWCs

Attributes	
Point	006
Title	
Unit name	Devils Canyon
Route: name	None
Route: Construction	No evidence/user-created
Route: Improvements	None
Route: Use	No sign observed
Route: Purpose	No apparent purpose
Route: Determination	Way
Other notes	None
Route: Maintenance	None
Feature	Erosion
Feature notes	None
Feature Class	Primitive Route



Attributes	
Point	007
Title	
Unit name	Devils Canyon
Route: name	None
Route: Construction	Bladed
Route: Improvements	None
Route: Use	No sign observed
Route: Purpose	No apparent purpose
Route: Determination	Way
Other notes	None
Route: Maintenance	None
Feature	Typical Condition of Route
Feature notes	None
Feature Class	Primitive Route



fg

Attributes

Point	008
Title	
Unit name	Bronco Wash and Devils Canyon
Route: name	None
Route:	Bladed
Construction	
Route:	None
Improvements	
Route: Use	4-WD Trucks
Route: Purpose	Multiple uses
Route:	Road
Determination	
Other notes	Unit Boundary
Route:	Old evidence - 3-5
Maintenance	years ago
Feature	Typical Condition of Route
Feature notes	None
Feature Class	Boundary Element

008



Attributes

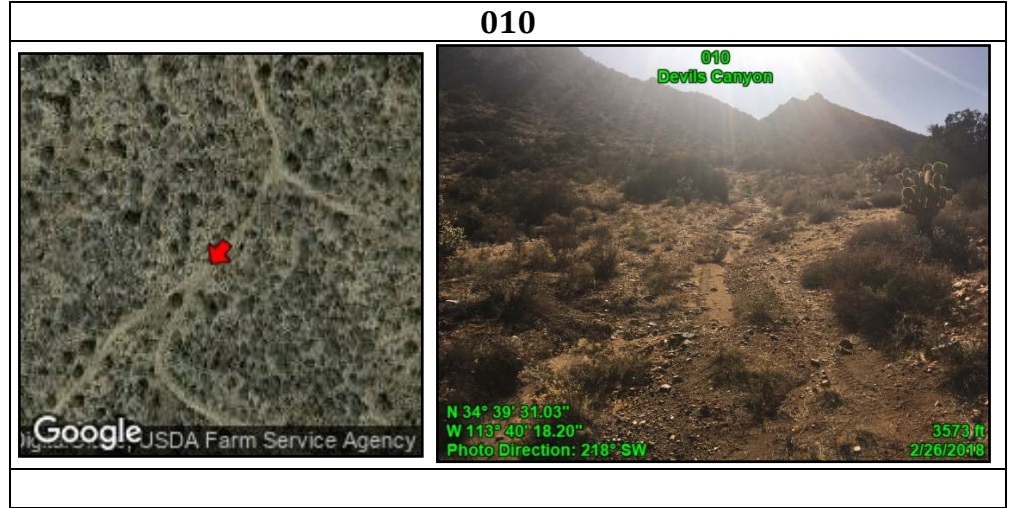
Point	009
Title	
Unit name	Devils Canyon
Route: name	7371
Route:	Bladed
Construction	
Route:	None
Improvements	
Route: Use	4-WD Trucks
Route: Purpose	No apparent purpose
Route:	Way
Determination	
Other notes	Kept open solely by passage of vehicles
Route:	None
Maintenance	
Feature	Typical Condition of Route
Feature notes	Feature minimally affects naturalness
Feature Class	Primitive Route

009



Devils Canyon and Bronco Wash Proposed LWCs

Attributes	
Point	010
Title	
Unit name	Devils Canyon
Route: name	7369
Route:	Bladed
Construction	
Route:	None
Improvements	
Route: Use	Misc. Off Road Vehicles
Route: Purpose	No apparent purpose
Route:	Way
Determination	
Other notes	Kept open solely by passage of vehicles
Route:	None
Maintenance	
Feature	Typical Condition of Route
Feature notes	None
Feature Class	Primitive Route



Attributes

Point	011
Title	
Unit name	Devils Canyon
Route: name	N/A
Route:	N/A
Construction	
Route:	N/A
Improvements	
Route: Use	N/A
Route: Purpose	N/A
Route:	N/A
Determination	
Other notes	Exclude this impact
Route:	N/A
Maintenance	
Feature	Windmill/Well and Corral
Feature notes	None
Feature Class	Impact: Excluded

011



Attributes

Point	017
Title	
Unit name	Devils Canyon & Bronco Wash
Route: name	None
Route:	Bladed
Construction	
Route:	None
Improvements	
Route: Use	2-WD Vehicles
Route: Purpose	Multiple uses
Route:	Road
Determination	
Other notes	Unit Boundary
Route:	Semi-recent evidence - 1-3 years ago
Maintenance	
Feature	Typical Condition of Route
Feature notes	None
Feature Class	Boundary Element

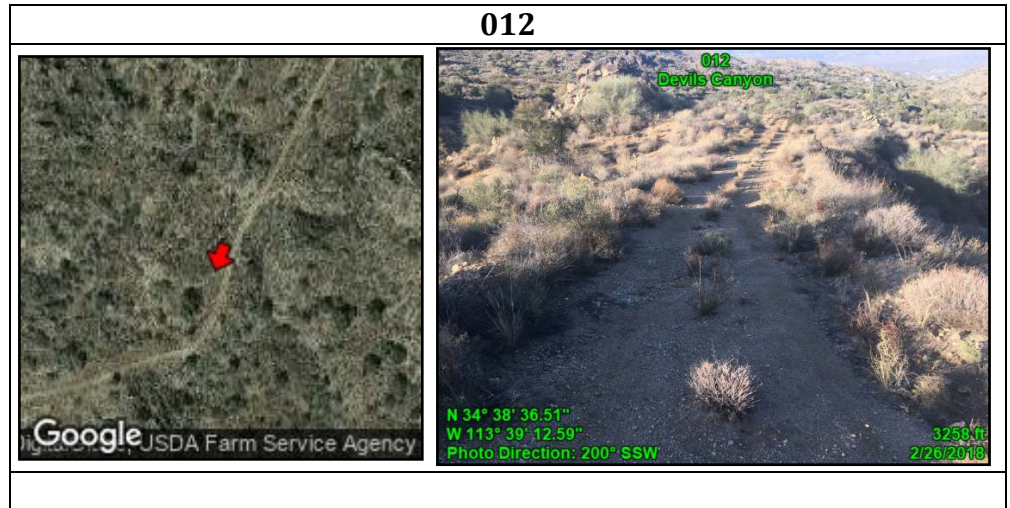
017



Devils Canyon and Bronco Wash Proposed LWCs

Attributes

Point	012
Title	
Unit name	Devils Canyon
Route: name	None
Route:	Bladed
Construction	
Route:	None
Improvements	
Route: Use	4-WD Trucks
Route: Purpose	No apparent purpose
Route:	Road
Determination	
Other notes	Kept open solely by passage of vehicles
Route:	None
Maintenance	
Feature	Typical Condition of Route
Feature notes	Feature minimally affects naturalness
Feature Class	Primitive Route



Devils Canyon and Bronco Wash Proposed LWCs

Attributes

Point	013
Title	
Unit name	Devils Canyon
Route: name	None
Route:	Bladed
Construction	
Route:	None
Improvements	
Route: Use	4-WD Trucks
Route: Purpose	No apparent purpose
Route:	Way
Determination	
Other notes	None
Route:	None
Maintenance	
Feature	Typical Condition of Route
Feature notes	None
Feature Class	Primitive Route

013



Attributes

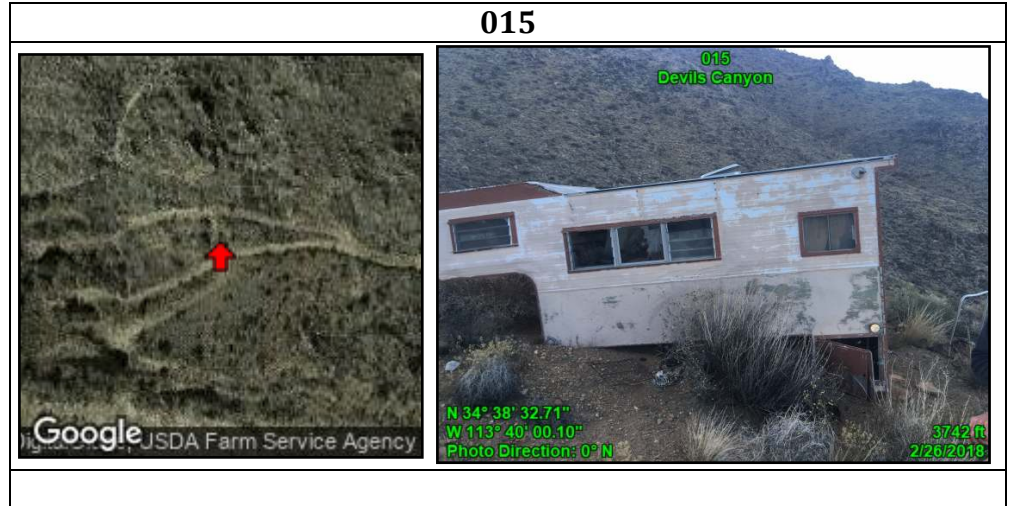
Point	014
Title	
Unit name	Devils Canyon
Route: name	None
Route:	No evidence/user-created
Construction	
Route:	None
Improvements	
Route: Use	4-WD Trucks
Route: Purpose	No apparent purpose
Route:	Way
Determination	
Other notes	None
Route:	None
Maintenance	
Feature	Typical Condition of Route
Feature notes	None
Feature Class	Primitive Route

014

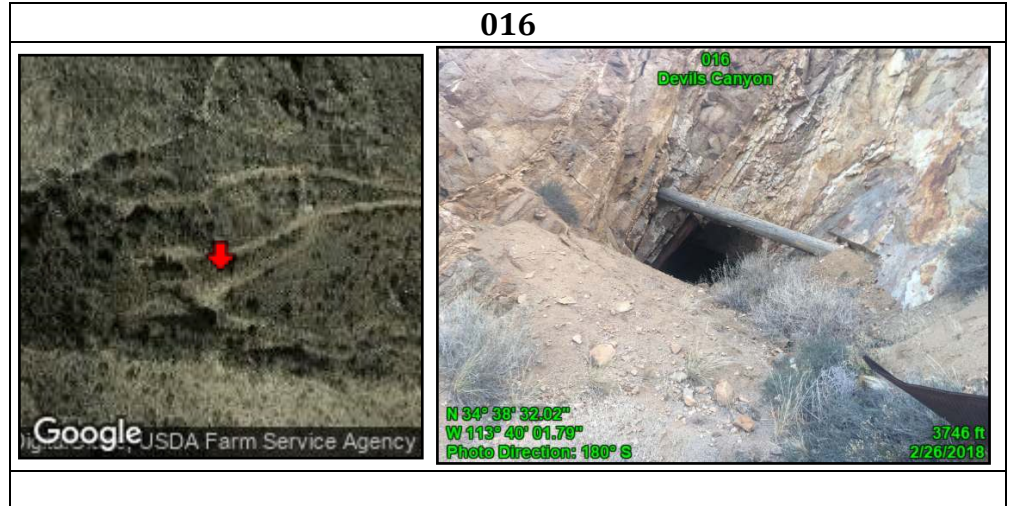


Devils Canyon and Bronco Wash Proposed LWCs

Attributes	
Point	015
Title	
Unit name	Devils Canyon
Route: name	N/A
Route:	N/A
Construction	
Route:	N/A
Improvements	
Route: Use	N/A
Route: Purpose	N/A
Route:	N/A
Determination	
Other notes	None
Route:	N/A
Maintenance	
Feature	Mobile home
Feature notes	Equipment appears to be out of order and abandoned
Feature Class	Impact: Acceptable

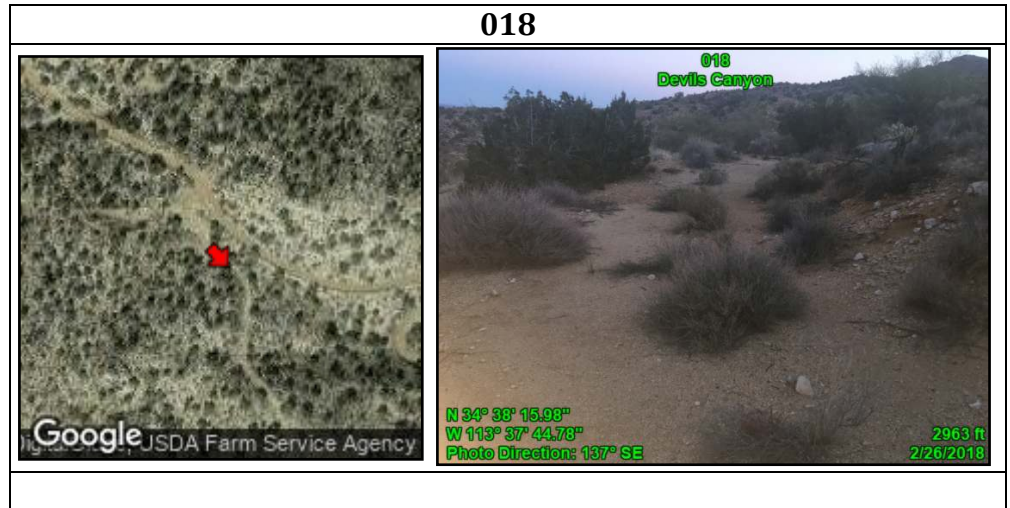


Attributes	
Point	016
Title	
Unit name	Devils Canyon
Route: name	N/A
Route:	N/A
Construction	
Route:	N/A
Improvements	
Route: Use	N/A
Route: Purpose	N/A
Route:	N/A
Determination	
Other notes	None
Route:	N/A
Maintenance	
Feature	Old prospect
Feature notes	Feature minimally affects naturalness
Feature Class	Impact: Acceptable

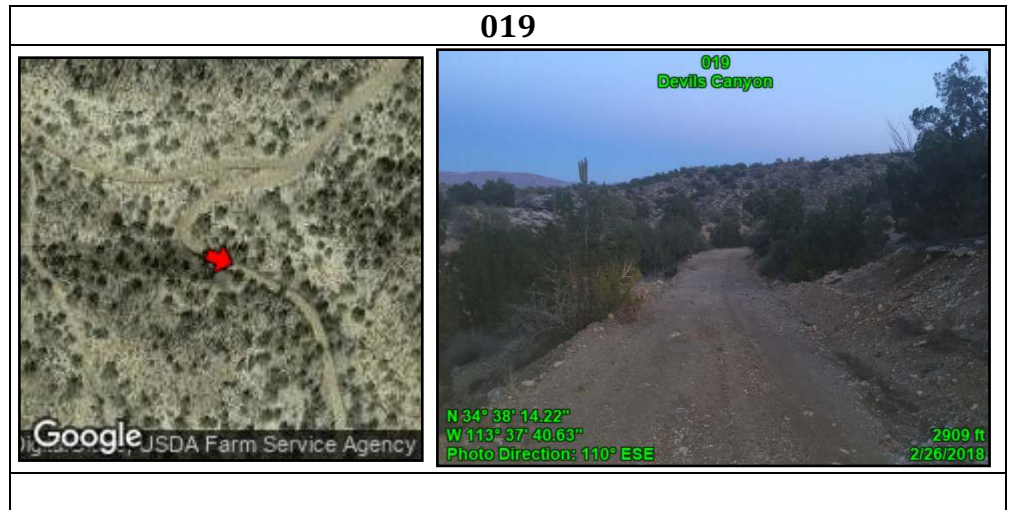


Devils Canyon and Bronco Wash Proposed LWCs

Attributes	
Point	018
Title	
Unit name	Devils Canyon
Route: name	None
Route:	No evidence
Construction	
Route:	None
Improvements	
Route: Use	No sign observed
Route: Purpose	No apparent purpose
Route: Determination	Reclaimed & unused
Other notes	None
Route:	None
Maintenance	
Feature	Typical Condition of Route
Feature notes	None
Feature Class	Primitive Route

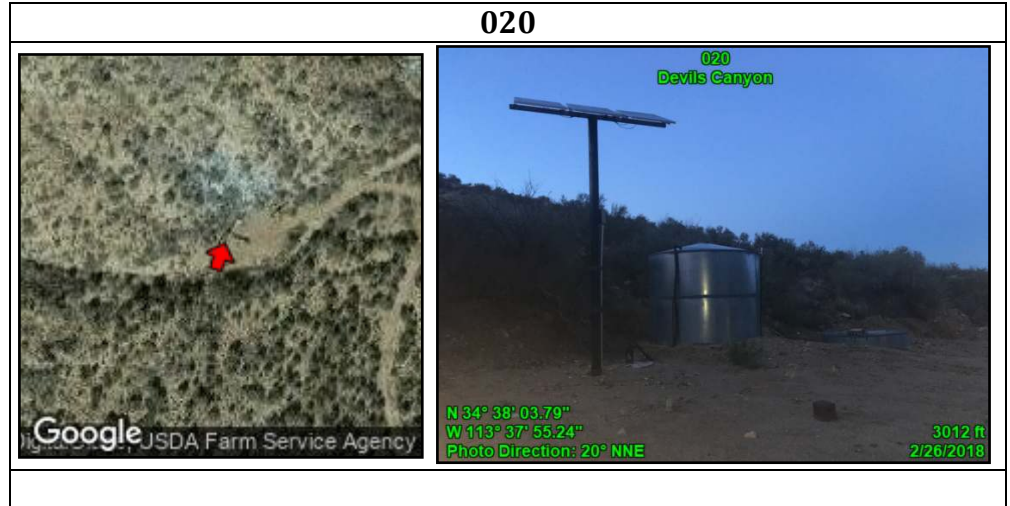


Attributes	
Point	019
Title	
Unit name	Devils Canyon
Route: name	7376B
Route:	Bladed
Construction	
Route:	None
Improvements	
Route: Use	2-WD Vehicles
Route: Purpose	Multiple uses
Route:	Road
Determination	
Other notes	Unit Boundary
Route: Maintenance	Semi-recent evidence - 1-3 years ago
Feature	Typical Condition of Route
Feature notes	None
Feature Class	Boundary Element

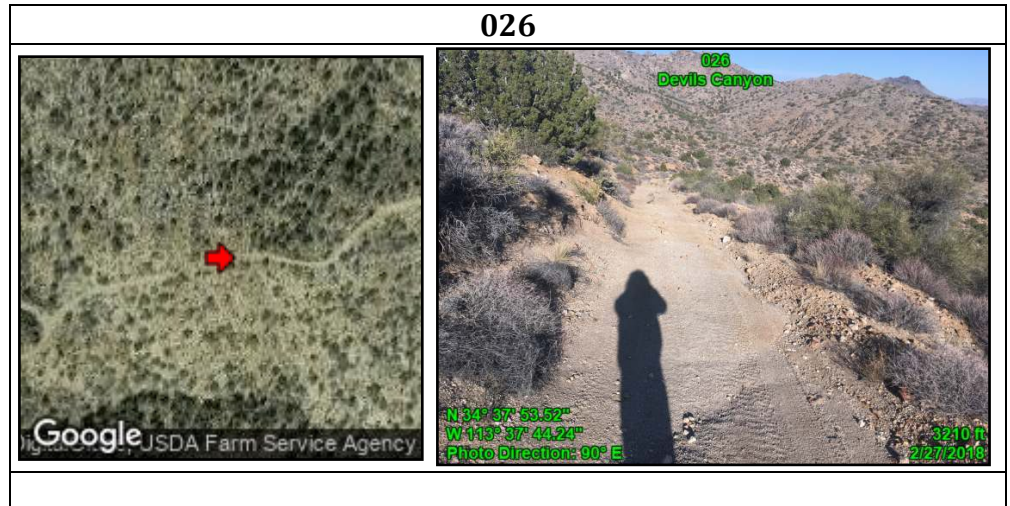


Devils Canyon and Bronco Wash Proposed LWCs

Attributes	
Point	020
Title	
Unit name	Devils Canyon
Route: name	N/A
Route:	N/A
Construction	
Route:	N/A
Improvements	
Route: Use	N/A
Route: Purpose	N/A
Route:	N/A
Determination	
Other notes	Cherrystem
Route:	N/A
Maintenance	
Feature	Windmill/Well
Feature notes	None
Feature Class	Boundary Element



Attributes	
Point	026
Title	
Unit name	Devils Canyon
Route: name	None
Route:	Bladed
Construction	
Route:	None
Improvements	
Route: Use	4-WD Trucks
Route: Purpose	Multiple uses
Route:	Road
Determination	
Other notes	None
Route:	Likely if needed
Maintenance	
Feature	Typical Condition of Route
Feature notes	Best section of route
Feature Class	Boundary Element



Devils Canyon and Bronco Wash Proposed LWCs

Attributes

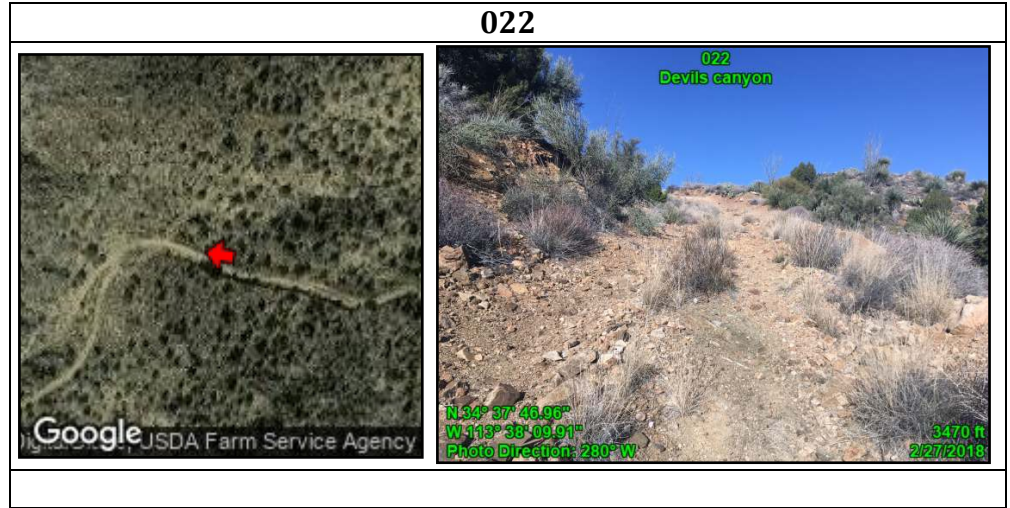
Point	021
Title	
Unit name	Devils Canyon
Route: name	None
Route:	Bladed
Construction	
Route:	None
Improvements	
Route: Use	4-WD Trucks
Route: Purpose	No apparent purpose
Route:	Way
Determination	
Other notes	Kept open solely by passage of vehicles
Route:	None
Maintenance	
Feature	Typical Condition of Route
Feature notes	None
Feature Class	Primitive Route

021



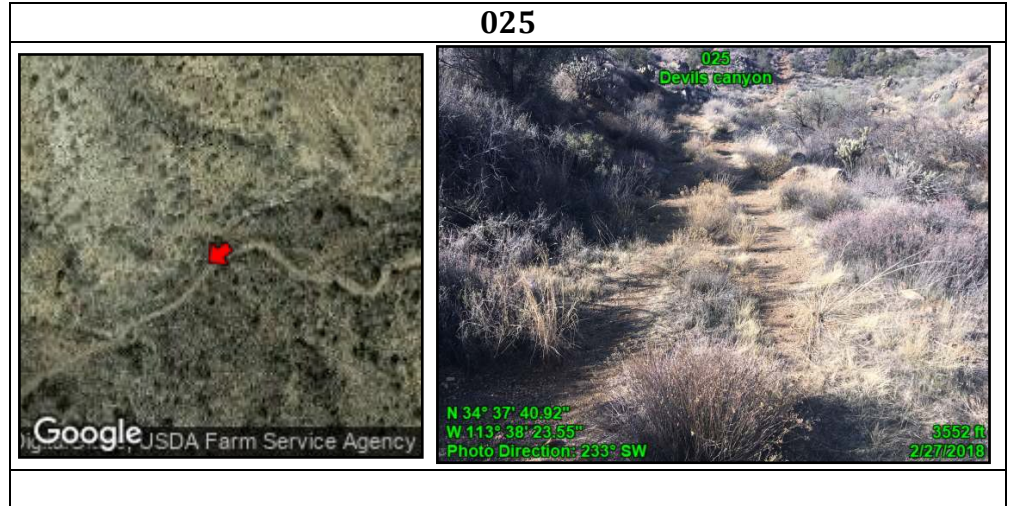
Devils Canyon and Bronco Wash Proposed LWCs

Attributes	
Point	022
Title	
Unit name	Devils canyon
Route: name	None
Route:	Bladed
Construction	
Route:	None
Improvements	
Route: Use	4-WD Trucks
Route: Purpose	No apparent purpose
Route:	Way
Determination	
Other notes	Kept open solely by passage of vehicles
Route:	None
Maintenance	
Feature	Typical Condition of Route
Feature notes	None
Feature Class	Primitive Route

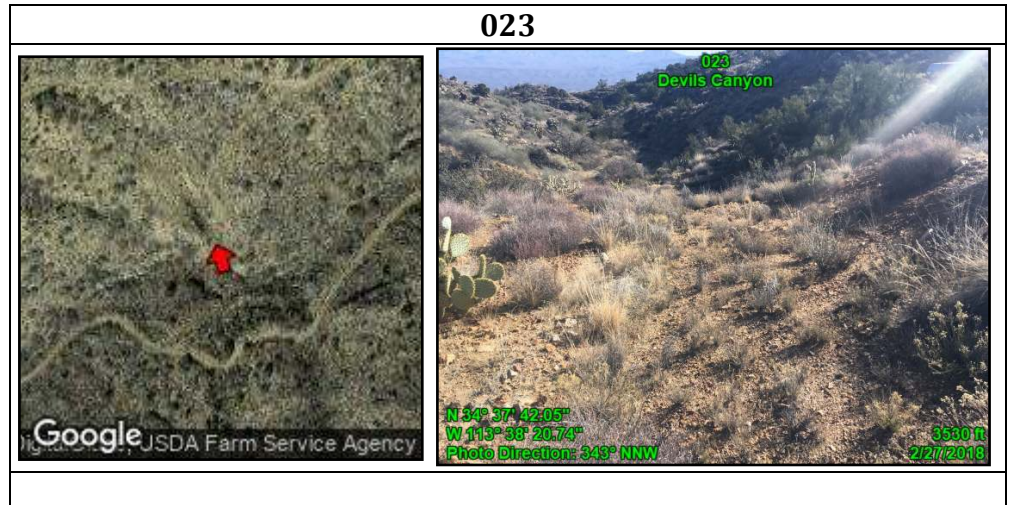


Devils Canyon and Bronco Wash Proposed LWCs

Attributes	
Point	025
Title	
Unit name	Devils canyon
Route: name	None
Route:	Bladed
Construction	
Route:	None
Improvements	
Route: Use	4-WD Trucks
Route: Purpose	No apparent purpose
Route:	Way
Determination	
Other notes	Kept open solely by passage of vehicles
Route: Maintenance	None
Feature	Typical Condition of Route
Feature notes	None
Feature Class	Primitive Route



Attributes	
Point	023
Title	
Unit name	Devils Canyon
Route: name	None
Route:	Bladed
Construction	
Route:	None
Improvements	
Route: Use	4-WD Trucks
Route: Purpose	No apparent purpose
Route: Determination	Reclaimed & unused
Other notes	None
Route: Maintenance	None
Feature	Typical Condition of Route
Feature notes	None
Feature Class	Primitive Route





Devils Canyon and Bronco Wash Proposed LWCs

Attributes

Point	024
Title	
Unit name	Devils Canyon
Route: name	None
Route:	Bladed
Construction	
Route:	None
Improvements	
Route: Use	No sign observed
Route: Purpose	No apparent purpose
Route: Determination	Reclaimed & unused
Other notes	None
Route: Maintenance	None
Feature	Typical Condition of Route
Feature notes	None
Feature Class	Primitive Route



024

Attributes

Point	027
Title	
Unit name	Devils Canyon
Route: name	None
Route:	Bladed
Construction	
Route:	None
Improvements	
Route: Use	4-WD Trucks
Route: Purpose	Multiple uses
Route:	Road
Determination	
Other notes	Unit Boundary
Route: Maintenance	Old evidence - 3-5 years ago
Feature	Typical Condition of Route
Feature notes	None
Feature Class	Boundary Element



027

Devils Canyon and Bronco Wash Proposed LWCs



Attributes	
Point	028
Title	
Unit name	Devils Canyon
Route: name	None
Route:	Bladed
Construction	
Route:	None
Improvements	
Route: Use	4-WD Trucks
Route: Purpose	No apparent purpose
Route:	Way
Determination	
Other notes	None
Route:	None
Maintenance	
Feature	Typical Condition of Route
Feature notes	None
Feature Class	Primitive Route

028

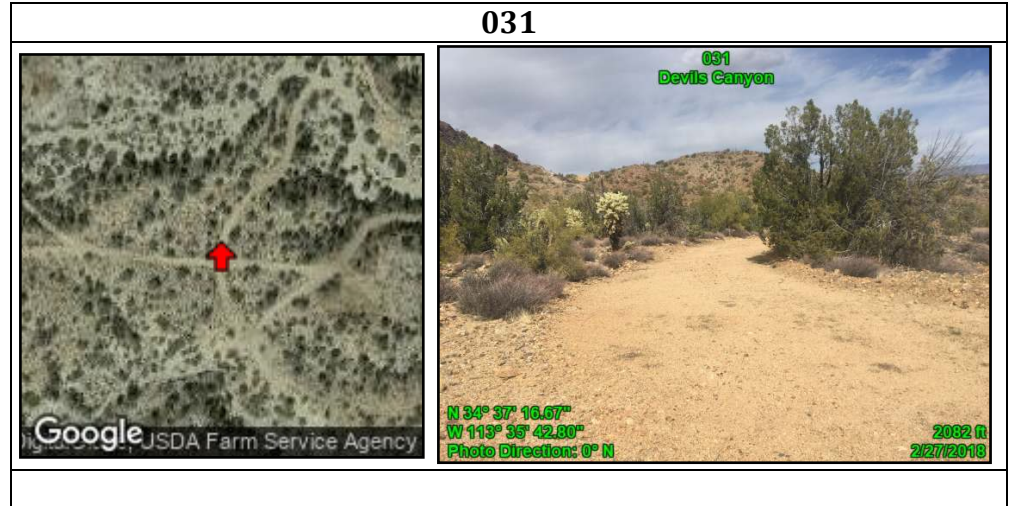
Attributes	
Point	029
Title	
Unit name	Devils Canyon
Route: name	7375
Route:	Bladed
Construction	
Route:	None
Improvements	
Route: Use	4-WD Trucks
Route: Purpose	No apparent purpose
Route:	Way
Determination	
Other notes	None
Route:	None
Maintenance	
Feature	Typical Condition of Route
Feature notes	Best section of route
Feature Class	Primitive Route

029

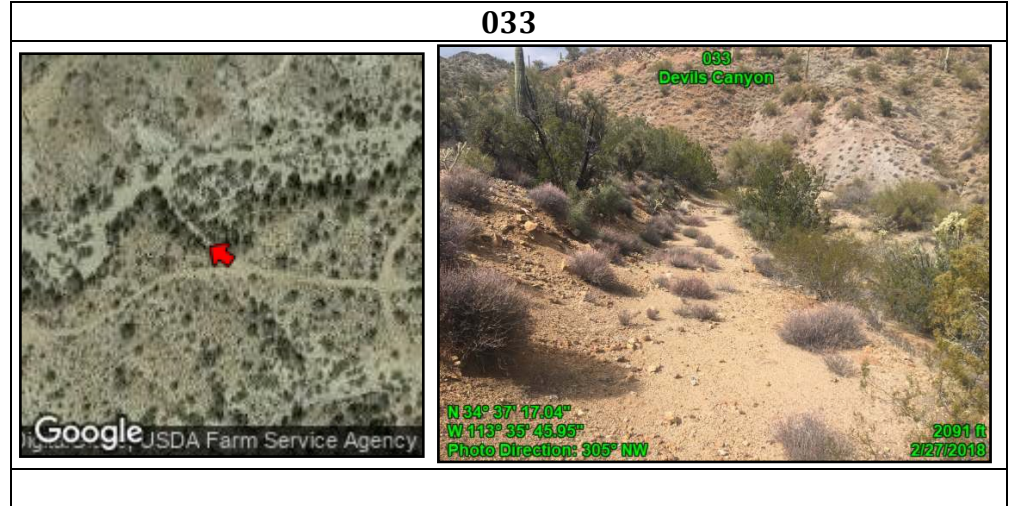



Devils Canyon and Bronco Wash Proposed LWCs

Attributes	
Point	031
Title	
Unit name	Devils Canyon
Route: name	None
Route:	Bladed
Construction	
Route:	None
Improvements	
Route: Use	4-WD Trucks
Route: Purpose	No apparent purpose
Route:	Way
Determination	
Other notes	None
Route:	None
Maintenance	
Feature	Typical Condition of Route
Feature notes	None
Feature Class	Primitive Route

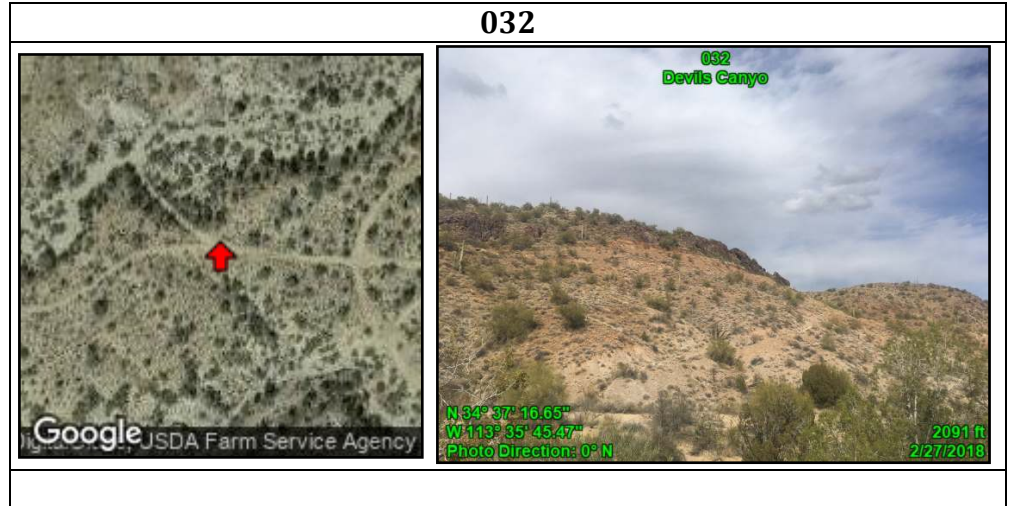


Attributes	
Point	033
Title	
Unit name	Devils Canyon
Route: name	None
Route:	Bladed
Construction	
Route:	None
Improvements	
Route: Use	No sign observed
Route: Purpose	No apparent purpose
Route:	Way
Determination	
Other notes	None
Route:	None
Maintenance	
Feature	Typical Condition of Route
Feature notes	None
Feature Class	Primitive Route

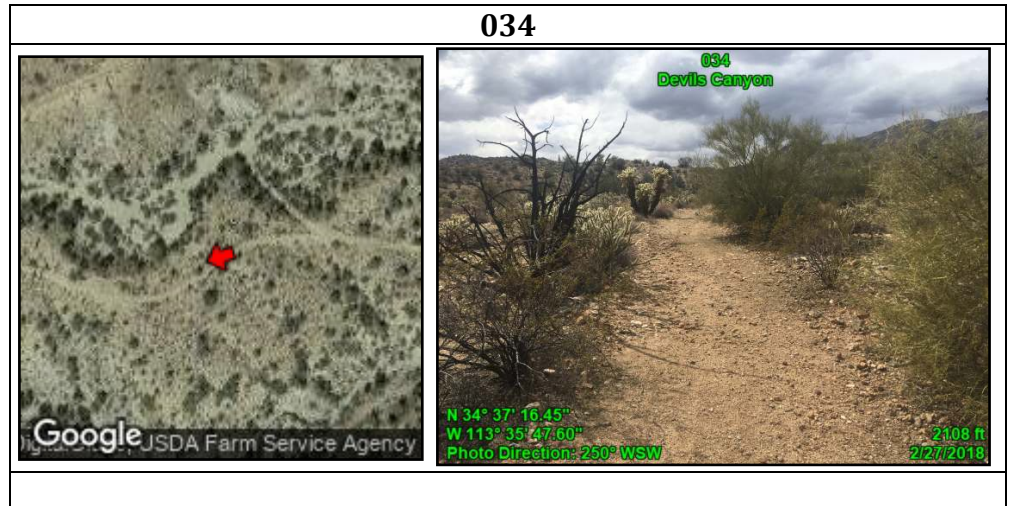


Devils Canyon and Bronco Wash Proposed LWCs

Attributes	
Point	032
Title	
Unit name	Devils Canyon
Route: name	N/A
Route:	N/A
Construction	
Route:	N/A
Improvements	
Route: Use	N/A
Route: Purpose	N/A
Route:	N/A
Determination	
Other notes	None
Route:	N/A
Maintenance	
Feature	Old mine
Feature notes	None
Feature Class	impact: Acceptable



Attributes	
Point	034
Title	
Unit name	Devils Canyon
Route: name	None
Route:	Bladed
Construction	
Route:	None
Improvements	
Route: Use	No sign observed
Route: Purpose	No apparent purpose
Route:	Way
Determination	
Other notes	None
Route:	None
Maintenance	
Feature	Typical Condition of Route
Feature notes	None
Feature Class	Primitive Route

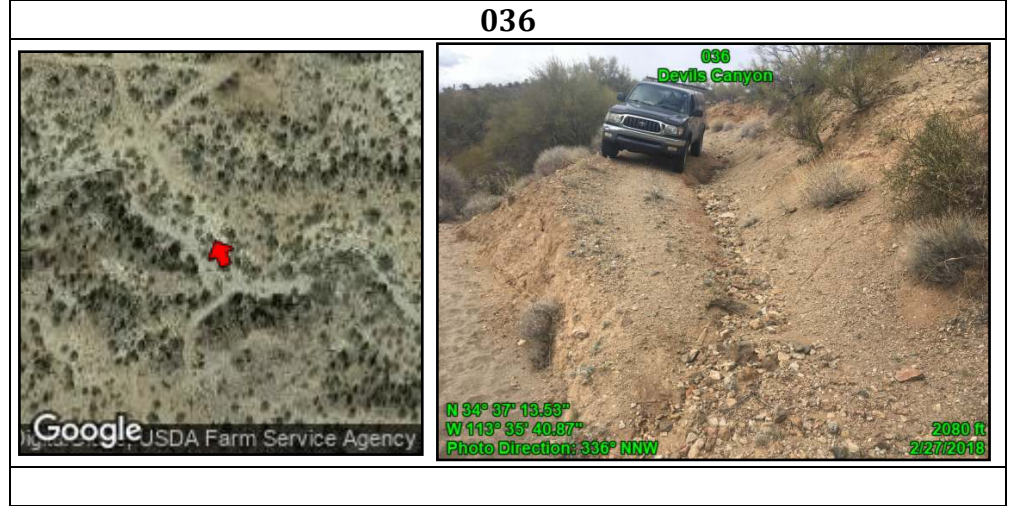


Devils Canyon and Bronco Wash Proposed LWCs

Attributes	
Point	035
Title	
Unit name	Devils Canyon
Route: name	None
Route:	Bladed
Construction	
Route:	None
Improvements	
Route: Use	No sign observed
Route: Purpose	No apparent purpose
Route: Determination	Reclaimed & unused
Other notes	None
Route:	None
Maintenance	
Feature	Typical Condition of Route
Feature notes	None
Feature Class	Primitive Route

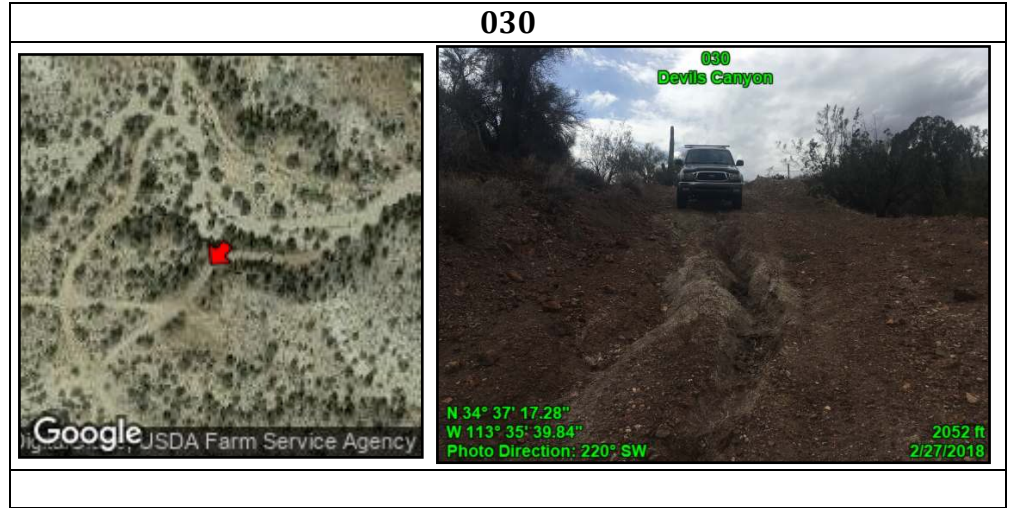


Attributes	
Point	036
Title	
Unit name	Devils Canyon
Route: name	7375A
Route:	Bladed
Construction	
Route:	None
Improvements	
Route: Use	4x4 Trucks
Route: Purpose	No apparent purpose
Route:	Way
Determination	
Other notes	None
Route:	None
Maintenance	
Feature	Erosion
Feature notes	None
Feature Class	Primitive Route

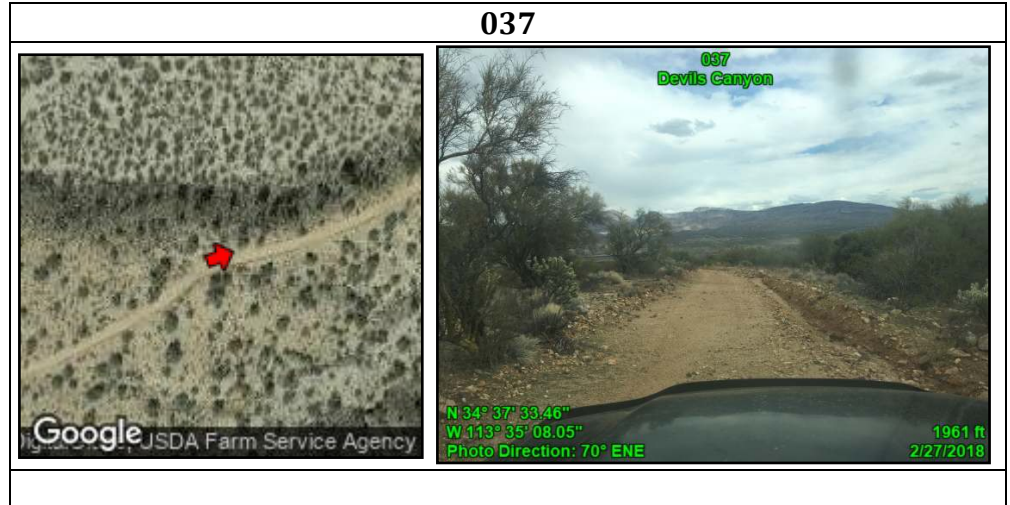


Devils Canyon and Bronco Wash Proposed LWCs

Attributes	
Point	030
Title	
Unit name	Devils Canyon
Route: name	7375
Route:	Bladed
Construction	
Route:	None
Improvements	
Route: Use	No sign observed
Route: Purpose	No apparent purpose
Route:	Way
Determination	
Other notes	Kept open solely by passage of vehicles
Route:	None
Maintenance	
Feature	Typical Condition of Route
Feature notes	Eroded
Feature Class	Primitive Route



Attributes	
Point	037
Title	
Unit name	Devils Canyon
Route: name	7379
Route:	Bladed
Construction	
Route:	None
Improvements	
Route: Use	No sign observed
Route: Purpose	No apparent purpose
Route:	Road
Determination	
Other notes	Unit Boundary
Route:	Old evidence - 3-5 years ago
Maintenance	
Feature	Typical Condition of Route
Feature notes	None
Feature Class	Primitive Route



Attributes

Point	038
Title	
Unit name	Devils Canyon
Route: name	None
Route:	Bladed
Construction	
Route:	None
Improvements	
Route: Use	No sign observed
Route: Purpose	No apparent purpose
Route:	N/A
Determination	
Other notes	None
Route:	None
Maintenance	
Feature	Closure point
Feature notes	None
Feature Class	Primitive Route

038



Attributes

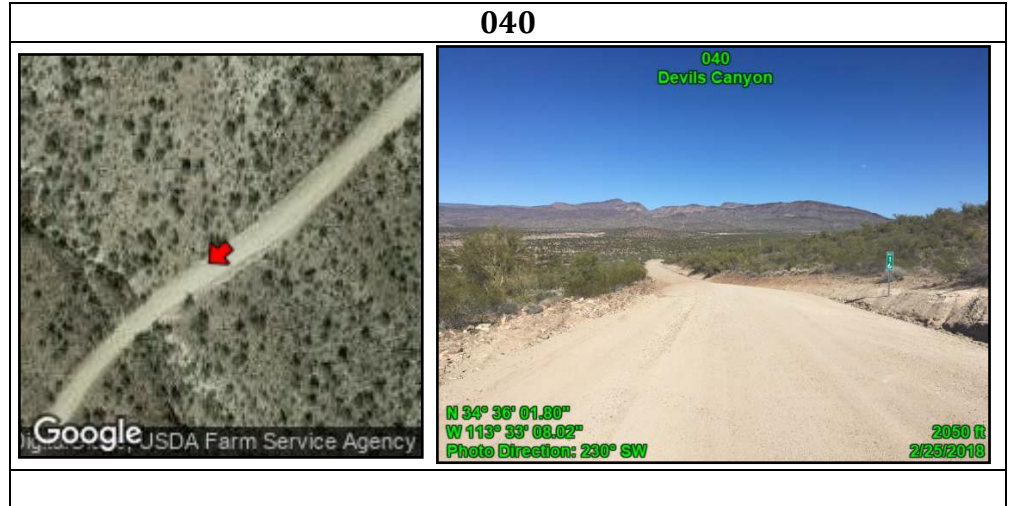
Point	039
Title	
Unit name	Devils Canyon
Route: name	None
Route:	Bladed
Construction	
Route:	None
Improvements	
Route: Use	No sign observed
Route: Purpose	No apparent purpose
Route:	Way
Determination	
Other notes	None
Route:	None
Maintenance	
Feature	Typical Condition of Route
Feature notes	None
Feature Class	Primitive Route

039

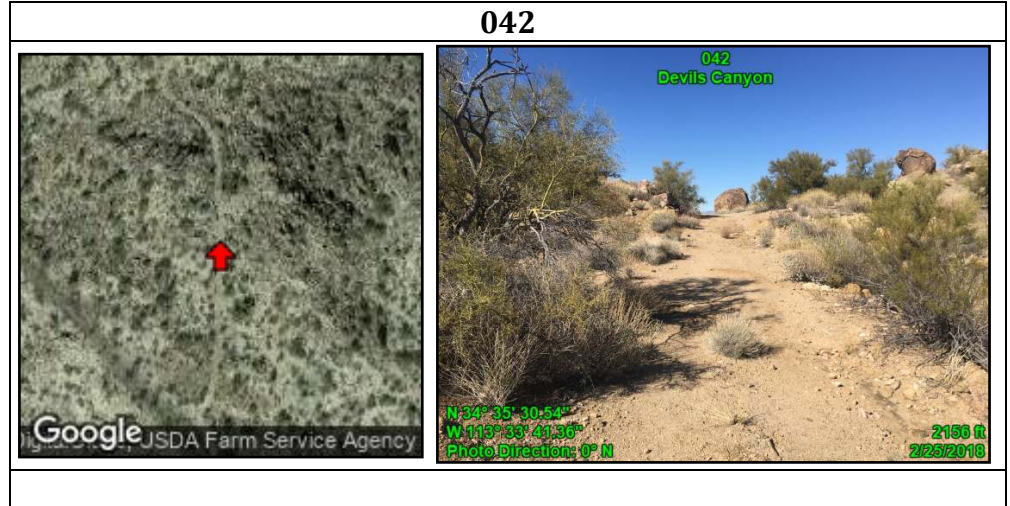


Devils Canyon and Bronco Wash Proposed LWCs

Attributes	
Point	040
Title	
Unit name	Devils Canyon
Route: name	Signal Road
Route:	Bladed
Construction	
Route:	None
Improvements	
Route: Use	2-WD Vehicles
Route: Purpose	Multiple uses
Route:	Road
Determination	
Other notes	Unit Boundary
Route:	Very recent blade -
Maintenance	past year
Feature	Typical Condition
	of Route
Feature notes	None
Feature Class	Primitive Route

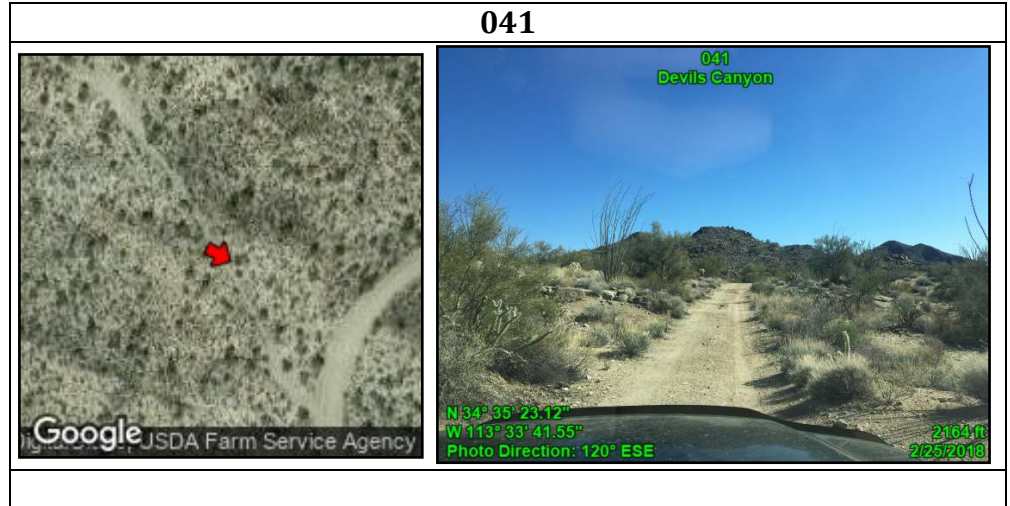


Attributes	
Point	042
Title	
Unit name	Devils Canyon
Route: name	None
Route:	Bladed
Construction	
Route:	None
Improvements	
Route: Use	4-WD Trucks
Route: Purpose	No apparent
	purpose
Route:	Way
Determination	
Other notes	Kept open solely
	by passage of
	vehicles
Route:	None
Maintenance	
Feature	Typical Condition
	of Route
Feature notes	None
Feature Class	Primitive Route

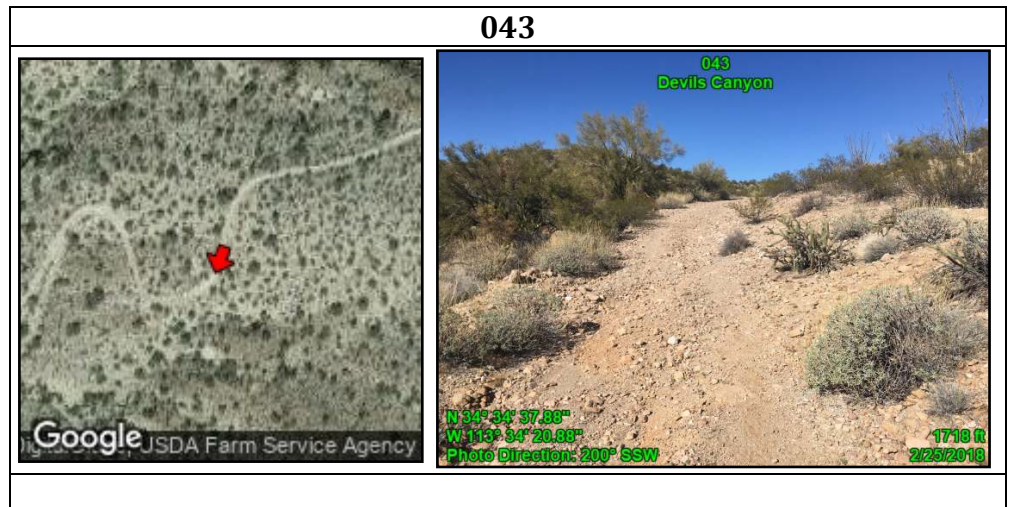


Devils Canyon and Bronco Wash Proposed LWCs

Attributes	
Point	041
Title	
Unit name	Devils Canyon
Route: name	None
Route:	Bladed
Construction	
Route:	None
Improvements	
Route: Use	2-WD Vehicles
Route: Purpose	No apparent purpose
Route:	Way
Determination	
Other notes	Kept open solely by the passage of vehicles
Route:	None
Maintenance	
Feature	Typical Condition of Route
Feature notes	None
Feature Class	Primitive Route



Attributes	
Point	043
Title	
Unit name	Devils Canyon
Route: name	None
Route:	Bladed
Construction	
Route:	None
Improvements	
Route: Use	2-WD Vehicles
Route: Purpose	No apparent purpose
Route:	Way
Determination	
Other notes	None
Route:	None
Maintenance	
Feature	Typical Condition of Route
Feature notes	None
Feature Class	Primitive Route



Devils Canyon and Bronco Wash Proposed LWCs

Attributes

Point	044
Title	
Unit name	Devils Canyon
Route: name	None
Route:	Bladed
Construction	
Route:	None
Improvements	
Route: Use	No sign observed
Route: Purpose	No apparent purpose
Route:	Way
Determination	
Other notes	None
Route:	None
Maintenance	
Feature	Typical Condition of Route
Feature notes	None
Feature Class	Primitive Route

044



Attributes

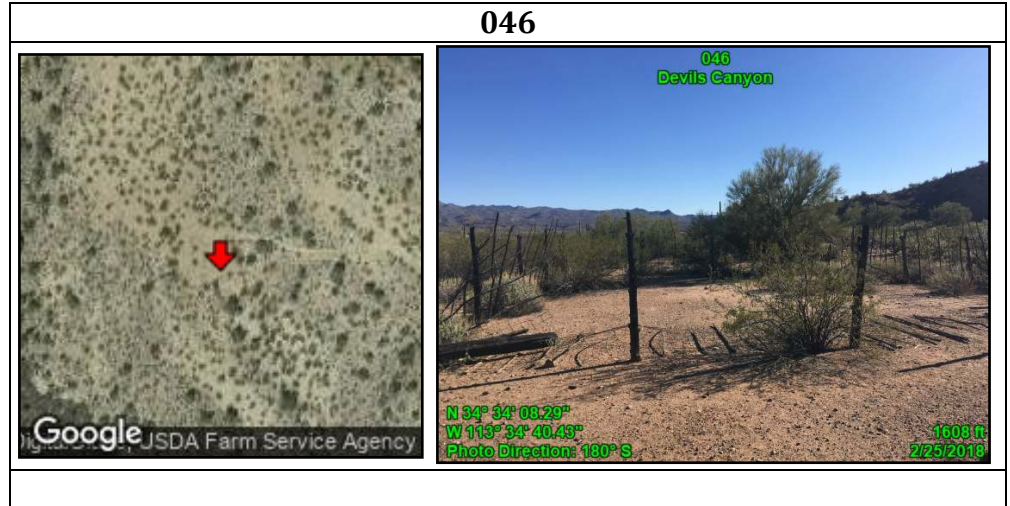
Point	045
Title	
Unit name	Devils Canyon
Route: name	None
Route:	Bladed
Construction	
Route:	None
Improvements	
Route: Use	2-WD Vehicles
Route: Purpose	No apparent purpose
Route:	Way
Determination	
Other notes	None
Route:	None
Maintenance	
Feature	Typical Condition of Route
Feature notes	None
Feature Class	Primitive Route

045

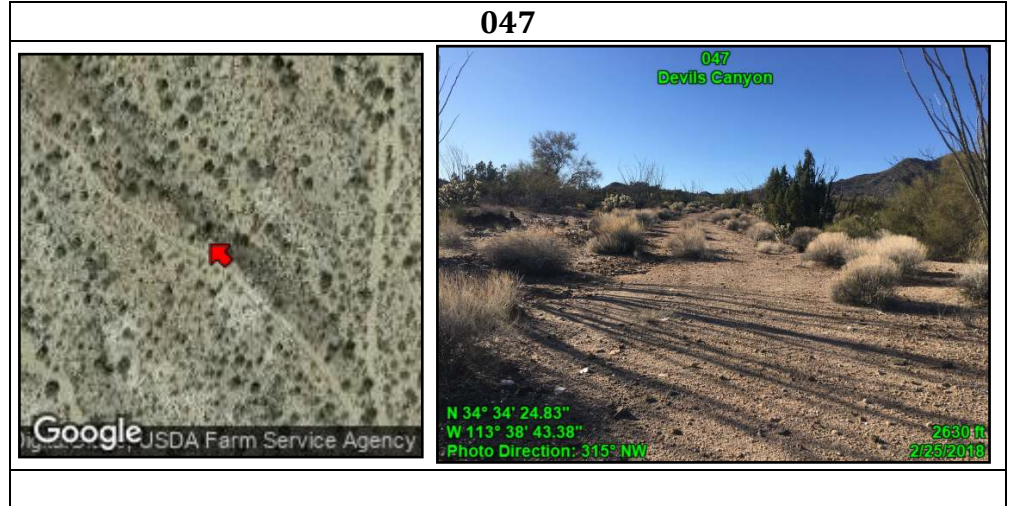


Devils Canyon and Bronco Wash Proposed LWCs

Attributes	
Point	046
Title	
Unit name	Devils Canyon
Route: name	N/A
Route:	N/A
Construction	
Route:	N/A
Improvements	
Route: Use	N/A
Route: Purpose	N/A
Route:	N/A
Determination	
Other notes	None
Route:	N/A
Maintenance	
Feature	Corral
Feature notes	Dilapidated, overgrown.
Feature Class	Impact: Acceptable



Attributes	
Point	047
Title	
Unit name	Devils Canyon
Route: name	None
Route:	Bladed
Construction	
Route:	None
Improvements	
Route: Use	2-WD Vehicles
Route: Purpose	No apparent purpose
Route:	Way
Determination	
Other notes	Kept open solely by passage of vehicles
Route:	None
Maintenance	
Feature	Typical Condition of Route
Feature notes	None
Feature Class	Primitive Route





Devils Canyon and Bronco Wash Proposed LWCs

Attributes

Point	049
Title	
Unit name	Devils Canyon
Route: name	None
Route:	Bladed
Construction	
Route:	None
Improvements	
Route: Use	2-WD Vehicles
Route: Purpose	No apparent purpose
Route:	Way
Determination	
Other notes	None
Route:	None
Maintenance	
Feature	Typical Condition of Route
Feature notes	None
Feature Class	Primitive Route



049

Attributes

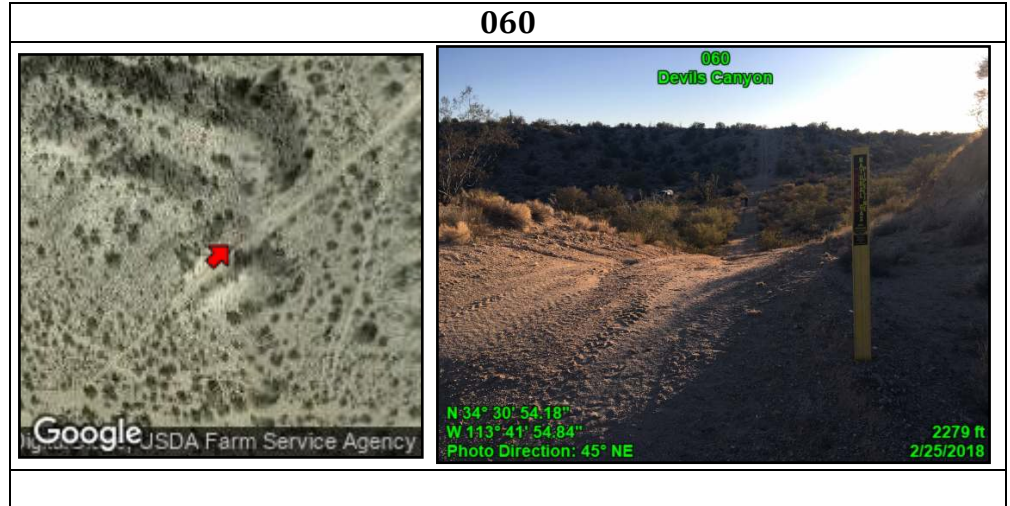
Point	048
Title	
Unit name	Devils Canyon
Route: name	N/A
Route:	N/A
Construction	
Route:	N/A
Improvements	
Route: Use	N/A
Route: Purpose	N/A
Route:	N/A
Determination	
Other notes	None
Route:	N/A
Maintenance	
Feature	Windmill/Well
Feature notes	Feature minimally affects naturalness
Feature Class	Impact: Acceptable

048

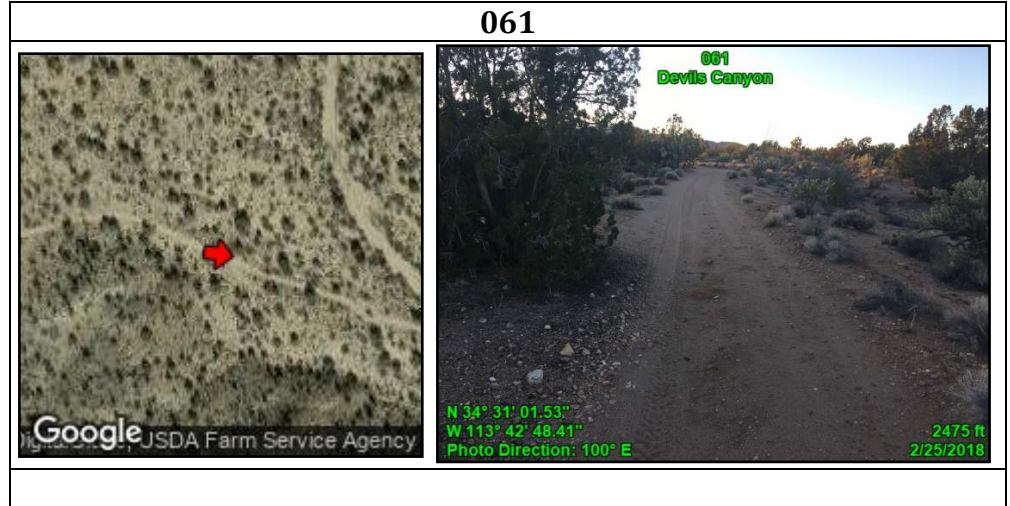



Devils Canyon and Bronco Wash Proposed LWCs

Attributes	
Point	060
Title	
Unit name	Devils Canyon
Route: name	None
Route:	Bladed
Construction	
Route:	None
Improvements	
Route: Use	4-WD Trucks
Route: Purpose	Follows natural gas pipeline
Route:	Road
Determination	
Other notes	Unit Boundary
Route:	Likely if needed
Maintenance	
Feature	Typical Condition of Route
Feature notes	None
Feature Class	Boundary Element

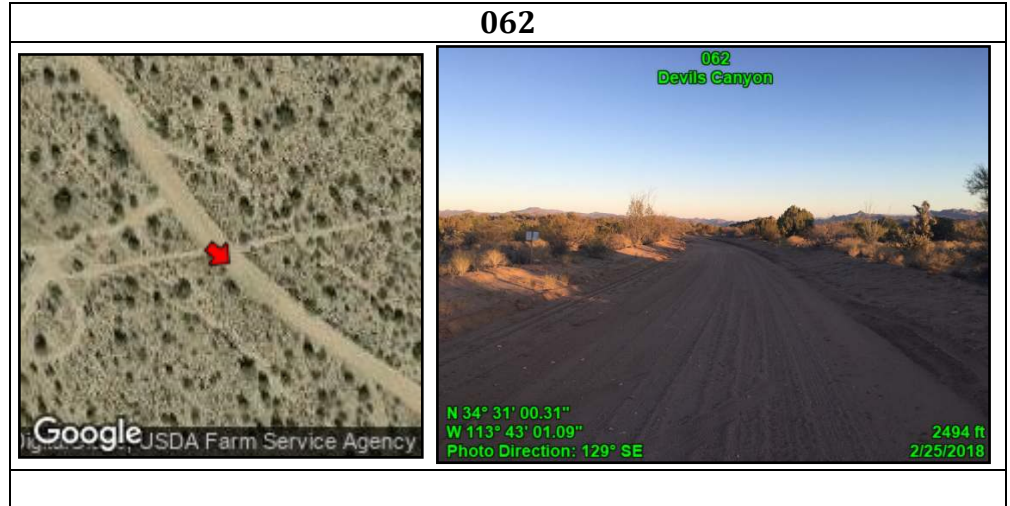


Attributes	
Point	061
Title	
Unit name	Devils Canyon
Route: name	None
Route:	Bladed
Construction	
Route:	None
Improvements	
Route: Use	4-WD Trucks
Route: Purpose	Follows water line
Route:	Road
Determination	
Other notes	None
Route:	Semi-recent evidence - 1-3 years ago
Maintenance	
Feature	Typical Condition of Route
Feature notes	None
Feature Class	Boundary Element

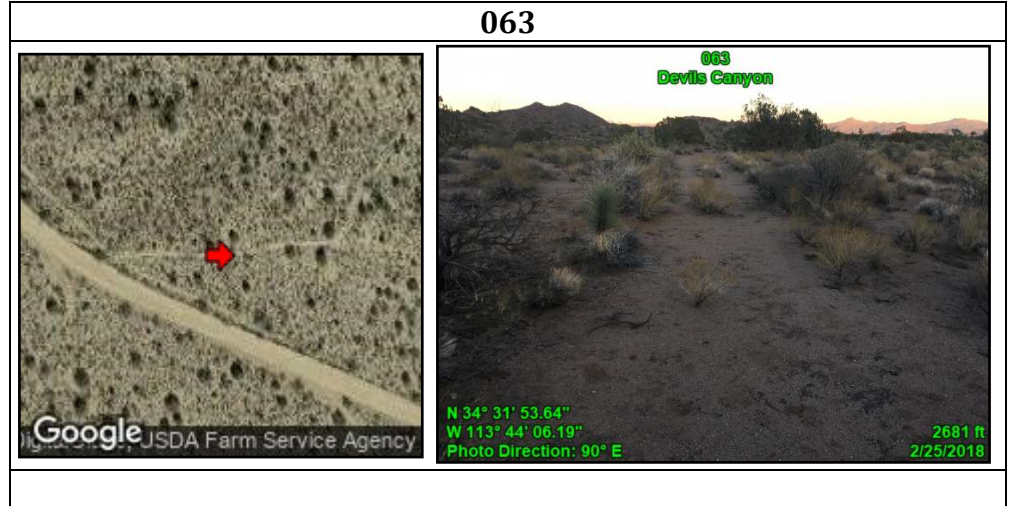


Devils Canyon and Bronco Wash Proposed LWCs

Attributes	
Point	062
Title	
Unit name	Devils Canyon
Route: name	Coyote Wells Rd
Route:	Bladed
Construction	
Route:	None
Improvements	
Route: Use	2-WD Vehicles
Route: Purpose	Follows water line
Route:	Road
Determination	
Other notes	Unit Boundary
Route:	Very recent blade -
Maintenance	past year
Feature	Typical Condition
	of Route
Feature notes	None
Feature Class	Boundary Element



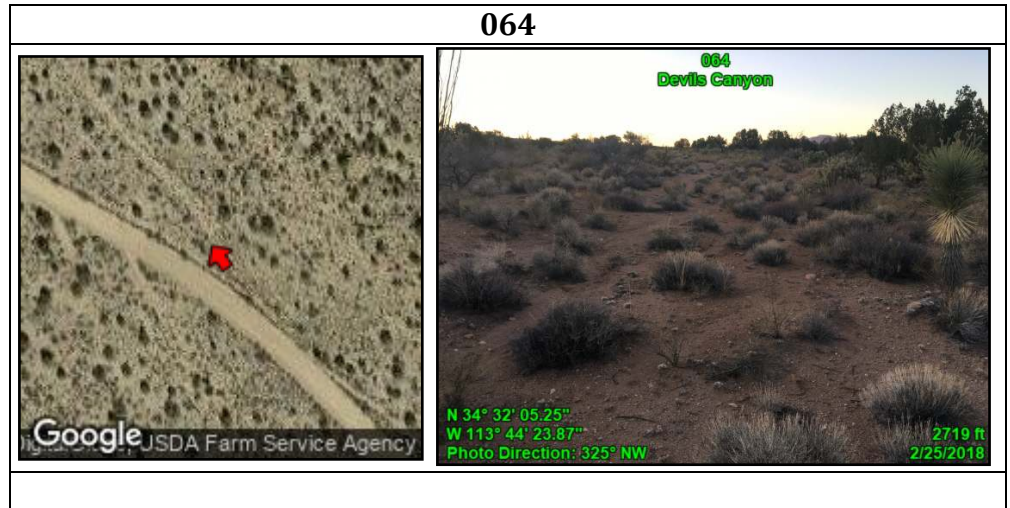
Attributes	
Point	063
Title	
Unit name	Devils Canyon
Route: name	None
Route:	No evidence/user-
Construction	created
Route:	None
Improvements	
Route: Use	No sign observed
Route: Purpose	No apparent
	purpose
Route:	Way
Determination	
Other notes	None
Route:	None
Maintenance	
Feature	Typical Condition
	of Route
Feature notes	None
Feature Class	Primitive Route



Devils Canyon and Bronco Wash Proposed LWCs

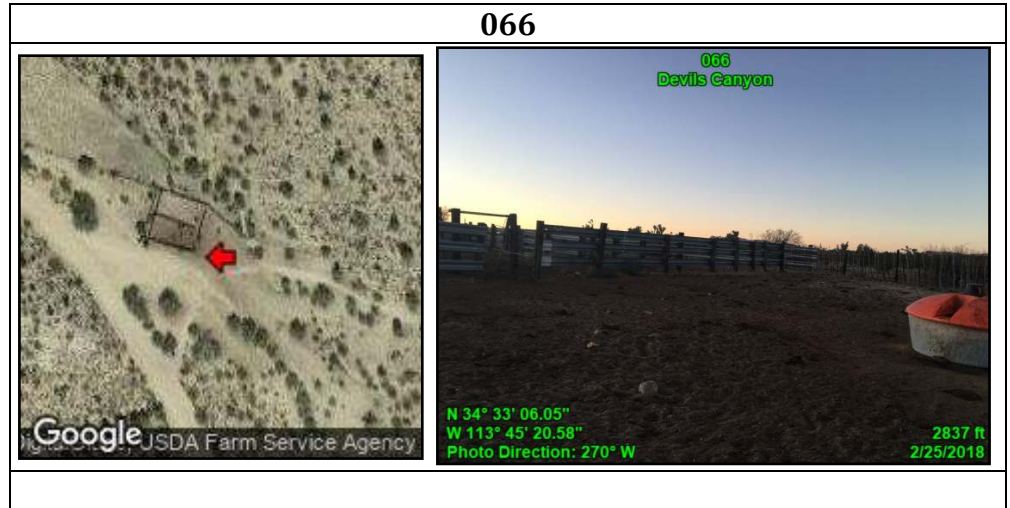
Attributes

Point	064
Title	
Unit name	Devils Canyon
Route: name	None
Route: Construction	No evidence/user-created
Route: Improvements	None
Route: Use	No sign observed
Route: Purpose	No apparent purpose
Route: Determination	Reclaimed & unused
Other notes	None
Route: Maintenance	None
Feature	Typical Condition of Route
Feature notes	None
Feature Class	Primitive Route



Attributes

Point	066
Title	
Unit name	Devils Canyon
Route: name	N/A
Route: Construction	N/A
Route: Improvements	N/A
Route: Use	N/A
Route: Purpose	N/A
Route: Determination	N/A
Other notes	Exclude this impact
Route: Maintenance	N/A
Feature	Corral
Feature notes	None
Feature Class	Impact: Excluded


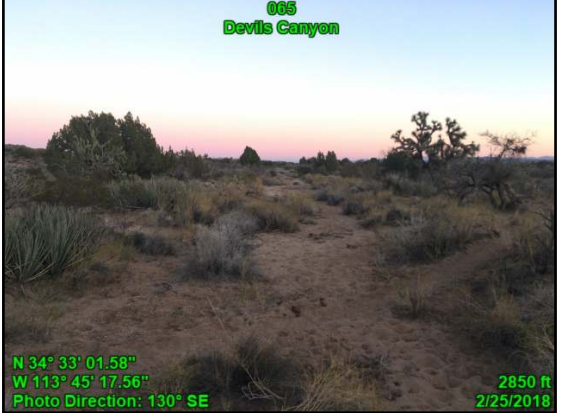


Devils Canyon and Bronco Wash Proposed LWCs

Attributes

Point	065
Title	
Unit name	Devils Canyon
Route: name	None
Route: Construction	No evidence/user-created
Route: Improvements	None
Route: Use	No sign observed
Route: Purpose	No apparent purpose
Route: Determination	Natural Wash
Other notes	None
Route: Maintenance	None
Feature	Natural Wash
Feature notes	None
Feature Class	Primitive Route



065

Attributes

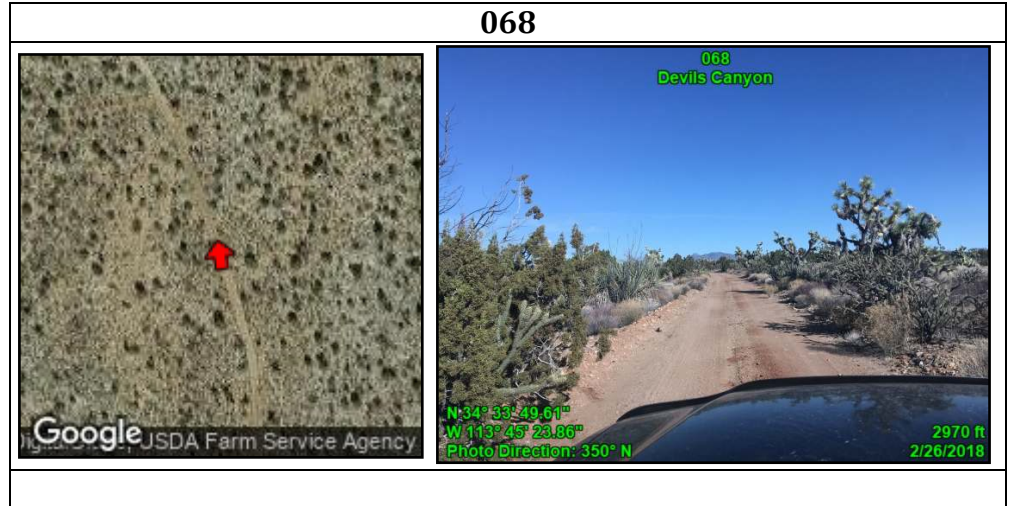
Point	067
Title	
Unit name	Devils Canyon
Route: name	None
Route: Construction	No evidence/user-created
Route: Improvements	None
Route: Use	4-WD Trucks
Route: Purpose	No apparent purpose
Route: Determination	Way
Other notes	Kept open solely by passage of vehicles
Route: Maintenance	None
Feature	Natural Wash
Feature notes	None
Feature Class	Primitive Route

067

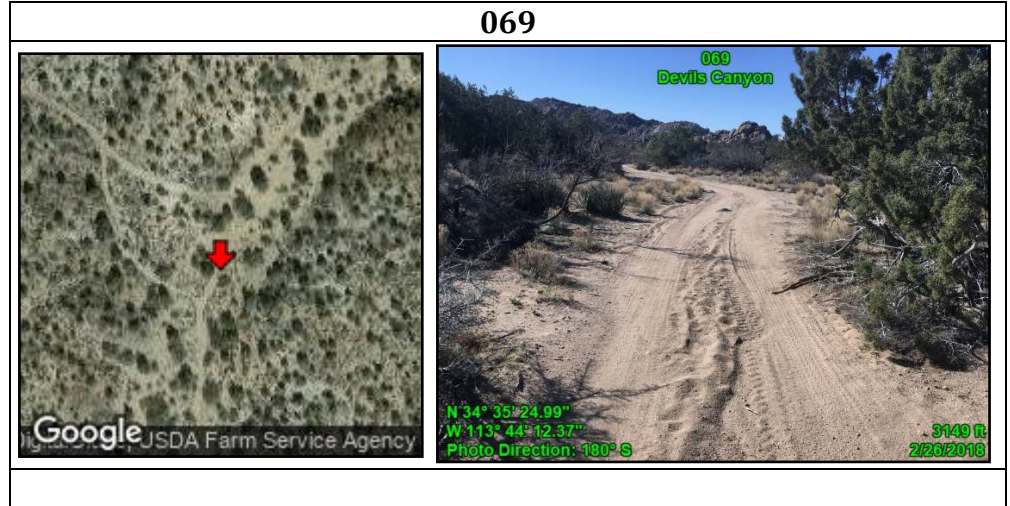



Devils Canyon and Bronco Wash Proposed LWCs

Attributes	
Point	068
Title	
Unit name	Devils Canyon
Route: name	None
Route:	Bladed
Construction	
Route:	None
Improvements	
Route: Use	2-WD Vehicles
Route: Purpose	Multiple uses
Route:	Road
Determination	
Other notes	Unit Boundary
Route: Maintenance	Semi-recent evidence - 1-3 years ago
Feature	Typical Condition of Route
Feature notes	None
Feature Class	Boundary Element

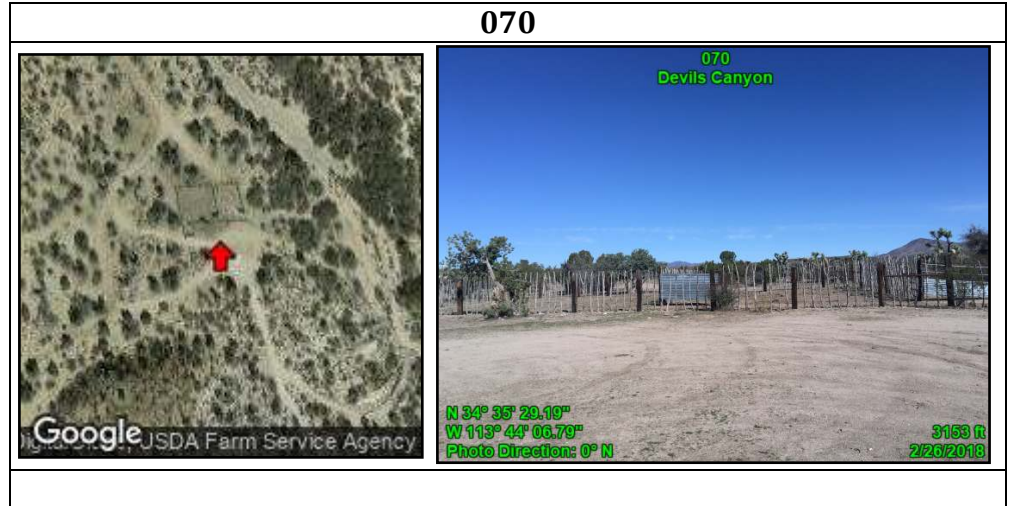


Attributes	
Point	069
Title	
Unit name	Devils Canyon
Route: name	None
Route:	Bladed
Construction	
Route:	None
Improvements	
Route: Use	2-WD Vehicles
Route: Purpose	Access state trust land
Route:	Road
Determination	
Other notes	Unit Boundary
Route: Maintenance	Likely if needed
Feature	Typical Condition of Route
Feature notes	None
Feature Class	Boundary Element

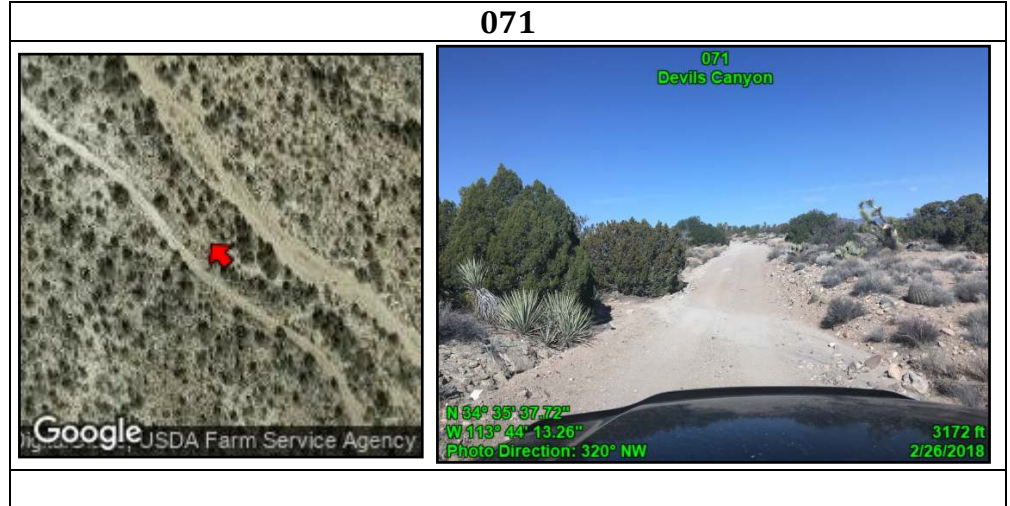


Devils Canyon and Bronco Wash Proposed LWCs

Attributes	
Point	070
Title	
Unit name	Devils Canyon
Route: name	N/A
Route:	N/A
Construction	
Route:	N/A
Improvements	
Route: Use	N/A
Route: Purpose	N/A
Route:	N/A
Determination	
Other notes	Exclude this impact
Route:	N/A
Maintenance	
Feature	Corral
Feature notes	None
Feature Class	Boundary Element

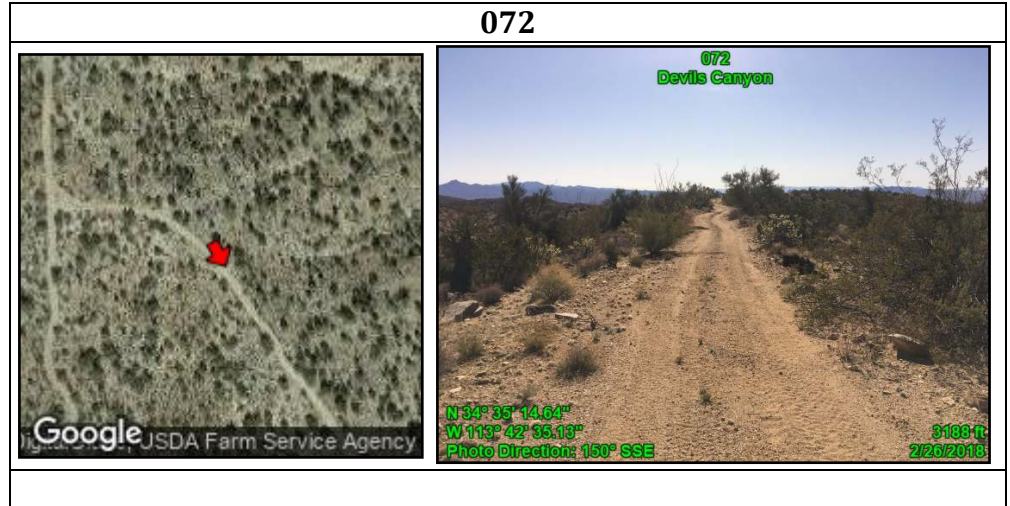


Attributes	
Point	071
Title	
Unit name	Devils Canyon
Route: name	7361
Route:	Bladed
Construction	
Route:	None
Improvements	
Route: Use	2-WD Vehicles
Route: Purpose	Multiple uses
Route:	Road
Determination	
Other notes	Unit Boundary
Route:	Semi-recent evidence - 1-3 years ago
Maintenance	
Feature	Typical Condition of Route
Feature notes	None
Feature Class	Boundary Element

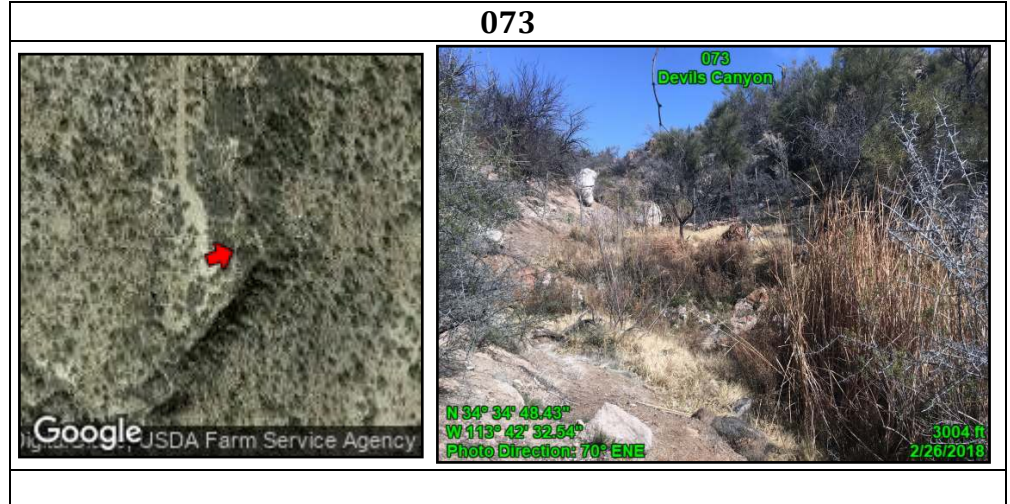


Devils Canyon and Bronco Wash Proposed LWCs

Attributes	
Point	072
Title	
Unit name	Devils Canyon
Route: name	7363A
Route:	Bladed
Construction	
Route:	None
Improvements	
Route: Use	4-WD Trucks
Route: Purpose	Spring access
Route:	Road
Determination	
Other notes	Cherrystem
Route:	Old evidence - 3-5
Maintenance	years ago
Feature	Typical Condition of Route
Feature notes	None
Feature Class	Boundary Element

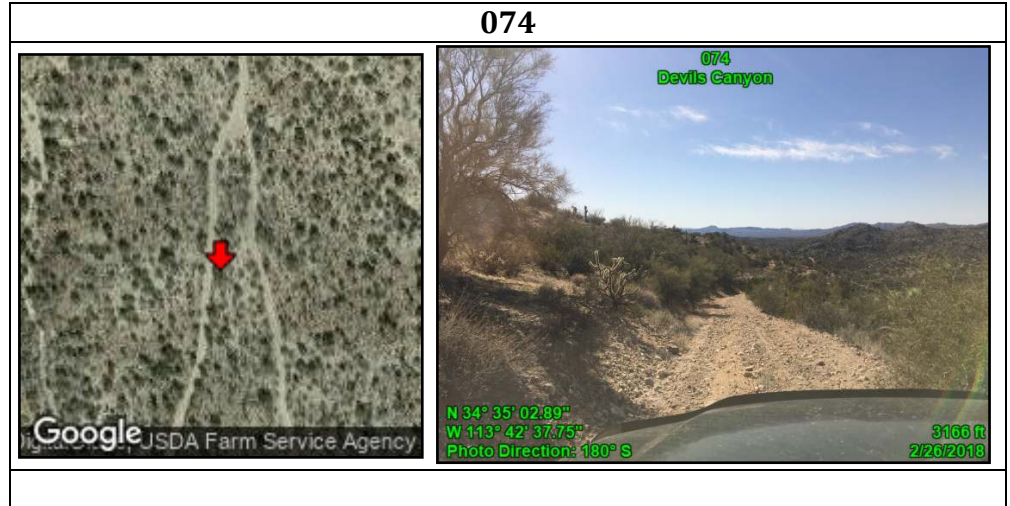


Attributes	
Point	073
Title	
Unit name	Devils Canyon
Route: name	N/A
Route:	N/A
Construction	
Route:	N/A
Improvements	
Route: Use	N/A
Route: Purpose	N/A
Route:	N/A
Determination	
Other notes	None
Route:	N/A
Maintenance	
Feature	Little Santa Cruz Spring
Feature notes	None
Feature Class	Impact: Excluded

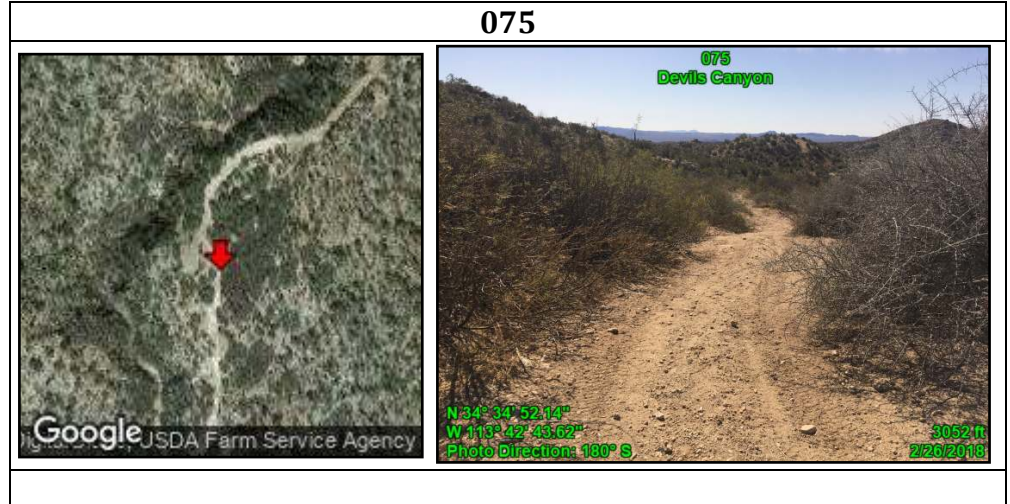


Devils Canyon and Bronco Wash Proposed LWCs

Attributes	
Point	074
Title	
Unit name	Devils Canyon
Route: name	7363
Route:	Bladed
Construction	
Route:	None
Improvements	
Route: Use	4-WD Trucks
Route: Purpose	Spring access
Route:	Road
Determination	
Other notes	Cherrystem
Route:	Old evidence - 3-5
Maintenance	years ago
Feature	Typical Condition of Route
Feature notes	None
Feature Class	Boundary Element

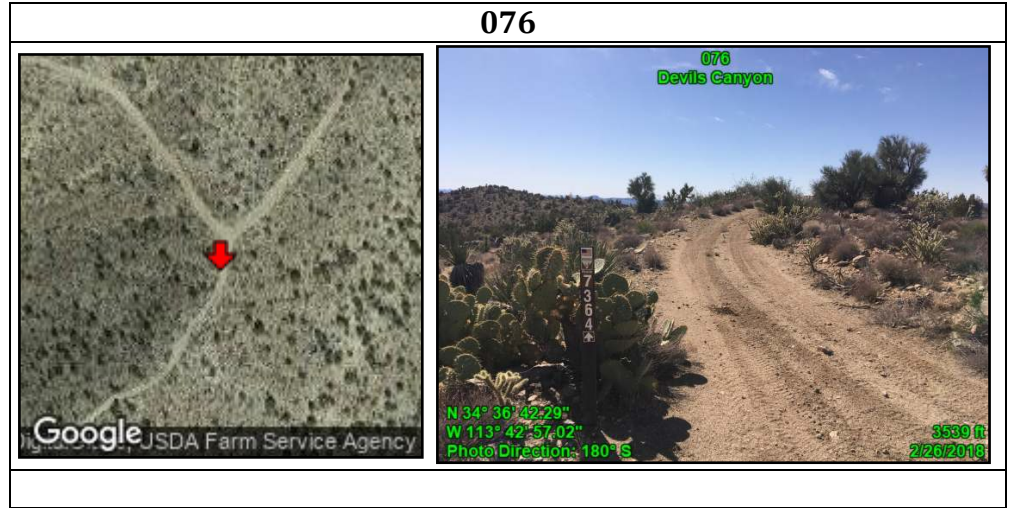


Attributes	
Point	075
Title	
Unit name	Devils Canyon
Route: name	None
Route:	No evidence/user-created
Construction	
Route:	None
Improvements	
Route: Use	4-WD Trucks
Route: Purpose	No apparent purpose
Route:	Way
Determination	
Other notes	Eventually enters natural wash
Route:	None
Maintenance	
Feature	Typical Condition of Route
Feature notes	None
Feature Class	Primitive Route

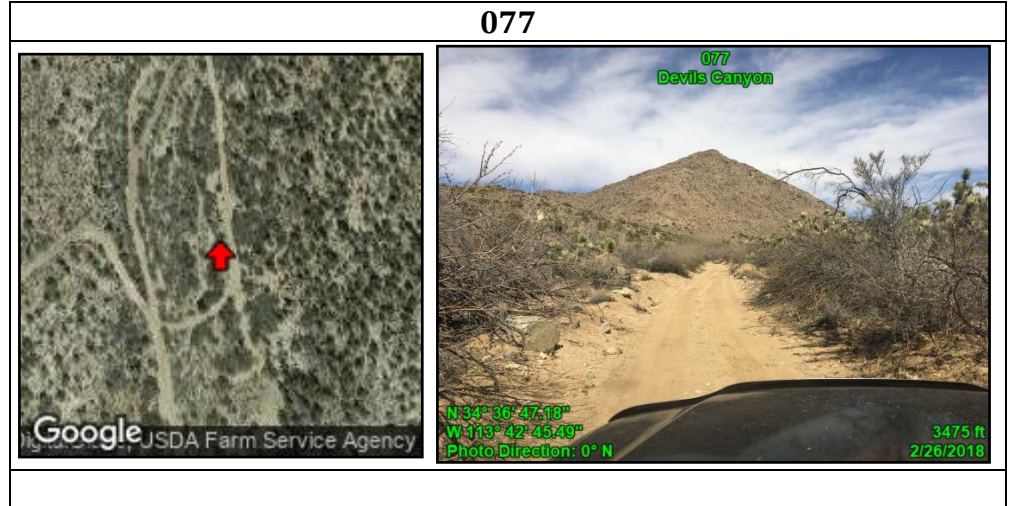


Devils Canyon and Bronco Wash Proposed LWCs

Attributes	
Point	076
Title	
Unit name	Devils Canyon
Route: name	7364
Route:	Bladed
Construction	
Route:	None
Improvements	
Route: Use	4-WD Trucks
Route: Purpose	Private land access
Route:	Road
Determination	
Other notes	Cherrystem
Route:	Likely if needed
Maintenance	
Feature	Typical Condition of Route
Feature notes	None
Feature Class	Boundary Element

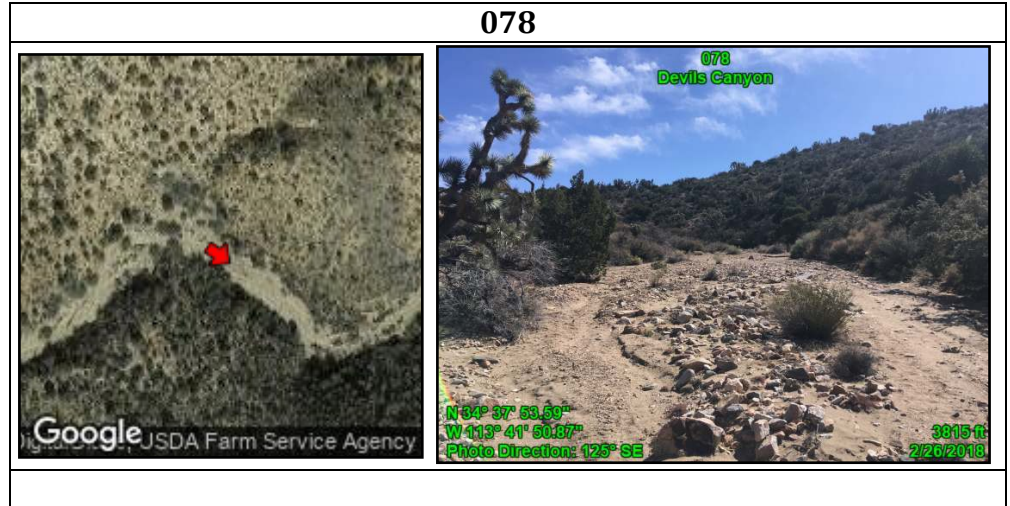


Attributes	
Point	077
Title	
Unit name	Devils Canyon
Route: name	7362A
Route:	Bladed
Construction	
Route:	None
Improvements	
Route: Use	4-WD Trucks
Route: Purpose	Private land access
Route:	Road
Determination	
Other notes	Cherrystem
Route:	Semi-recent evidence - 1-3 years ago
Maintenance	
Feature	Typical Condition of Route
Feature notes	None
Feature Class	Boundary Element



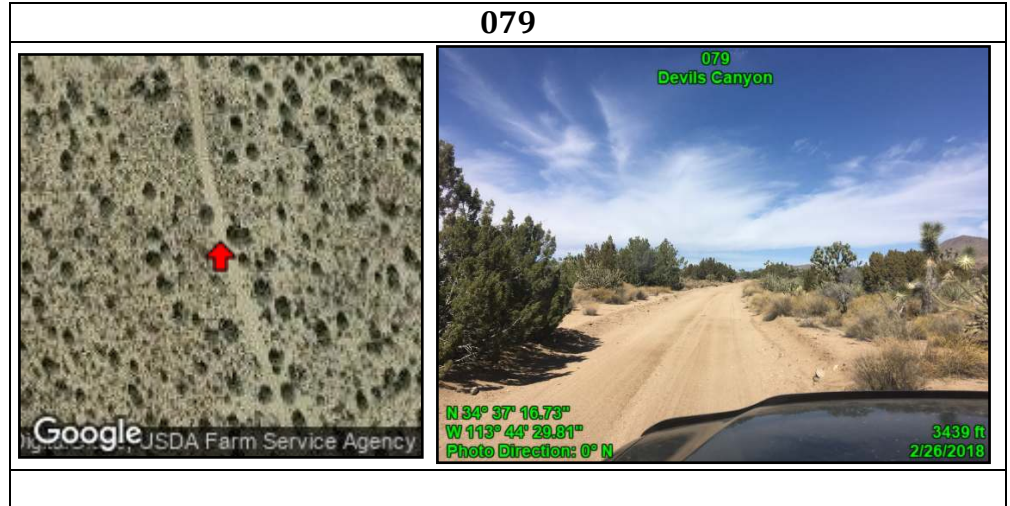
Devils Canyon and Bronco Wash Proposed LWCs

Attributes	
Point	078
Title	
Unit name	Devils Canyon
Route: name	None
Route: Construction	No evidence/user-created
Route: Improvements	None
Route: Use	4-WD Trucks
Route: Purpose	No apparent purpose
Route: Determination	Natural Wash
Other notes	Kept open solely by passage of vehicles
Route: Maintenance	None
Feature	Typical Condition of Route
Feature notes	Doesn't actually connect to private inholding
Feature Class	Primitive Route



Devils Canyon and Bronco Wash Proposed LWCs

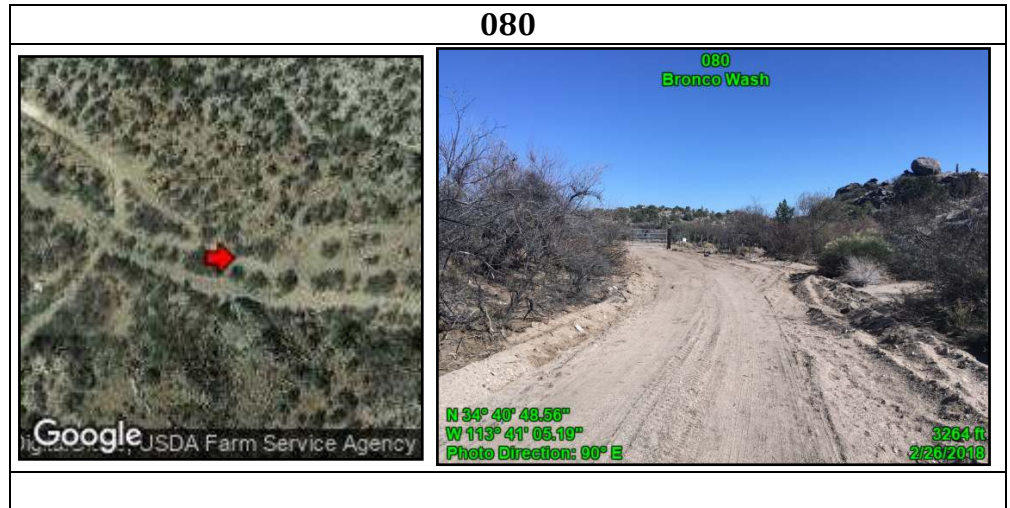
Attributes	
Point	079
Title	
Unit name	Devils Canyon
Route: name	None
Route:	Bladed
Construction	
Route:	None
Improvements	
Route: Use	2-WD Vehicles
Route: Purpose	Multiple uses
Route:	Road
Determination	
Other notes	Unit Boundary
Route:	Very recent blade -
Maintenance	past year
Feature	Typical Condition
	of Route
Feature notes	None
Feature Class	Boundary Element



Devils Canyon and Bronco Wash Proposed LWCs

Attributes

Point	080
Title	
Unit name	Bronco Wash
Route: name	None
Route:	Bladed
Construction	
Route:	None
Improvements	
Route: Use	2-WD Vehicles
Route: Purpose	Multiple uses
Route:	Road
Determination	
Other notes	Unit Boundary
Route:	Semi-recent
Maintenance	evidence - 1-3 years ago
Feature	Typical Condition of Route
Feature notes	None
Feature Class	Boundary Element



Devils Canyon and Bronco Wash Proposed LWCs

Attributes

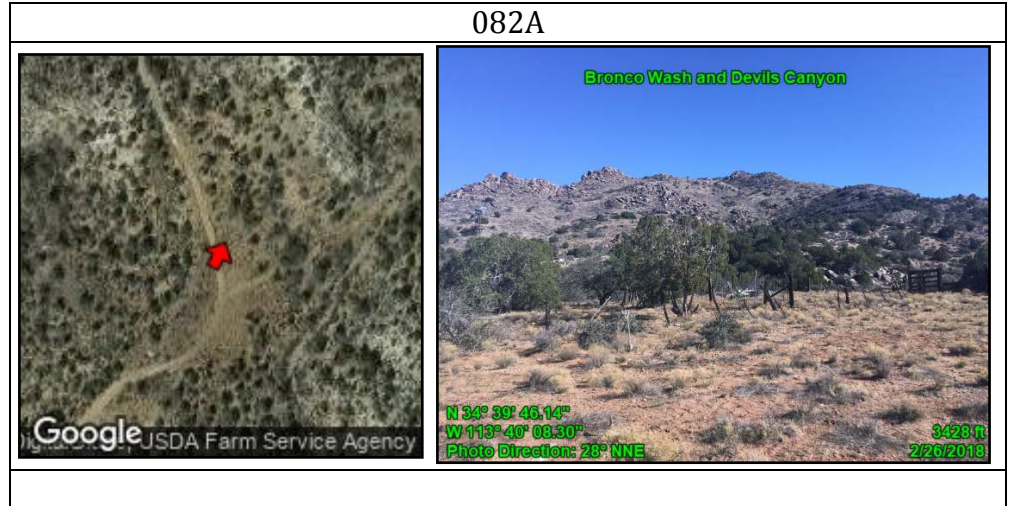
Point	081
Title	
Unit name	Bronco Wash
Route: name	None
Route:	Bladed
Construction	
Route:	None
Improvements	
Route: Use	4-WD Trucks
Route: Purpose	No apparent purpose
Route:	Way
Determination	
Other notes	Kept open solely by passage of vehicles
Route:	None
Maintenance	
Feature	Typical Condition of Route
Feature notes	Dead ends
Feature Class	Primitive Route

081



Devils Canyon and Bronco Wash Proposed LWCs

Attributes	
Point	082A
Title	
Unit name	Bronco Wash and Devils Canyon
Route: name	N/A
Route:	N/A
Construction	
Route:	N/A
Improvements	
Route: Use	N/A
Route: Purpose	N/A
Route:	N/A
Determination	
Other notes	None
Route:	N/A
Maintenance	
Feature	Windmill/Well and Corral
Feature notes	Equipment appears to be out of order and abandoned
Feature Class	Impact: Acceptable



Devils Canyon and Bronco Wash Proposed LWCs

Attributes

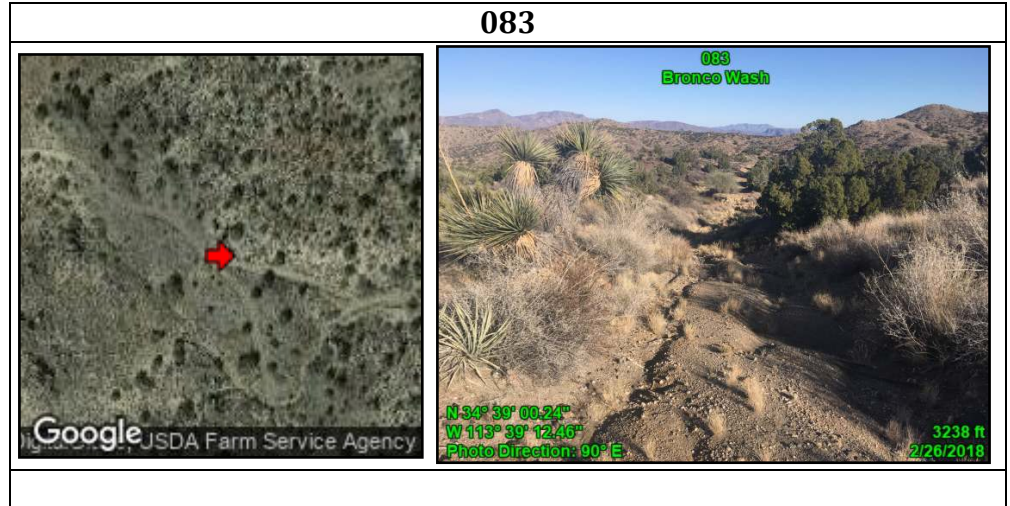
Point	082
Title	
Unit name	Bronco Wash
Route: name	7372
Route:	Bladed
Construction	
Route:	None
Improvements	
Route: Use	No sign observed
Route: Purpose	No apparent purpose
Route: Determination	Reclaimed & unused
Other notes	None
Route:	None
Maintenance	
Feature	Typical Condition of Route
Feature notes	None
Feature Class	Primitive Route

082

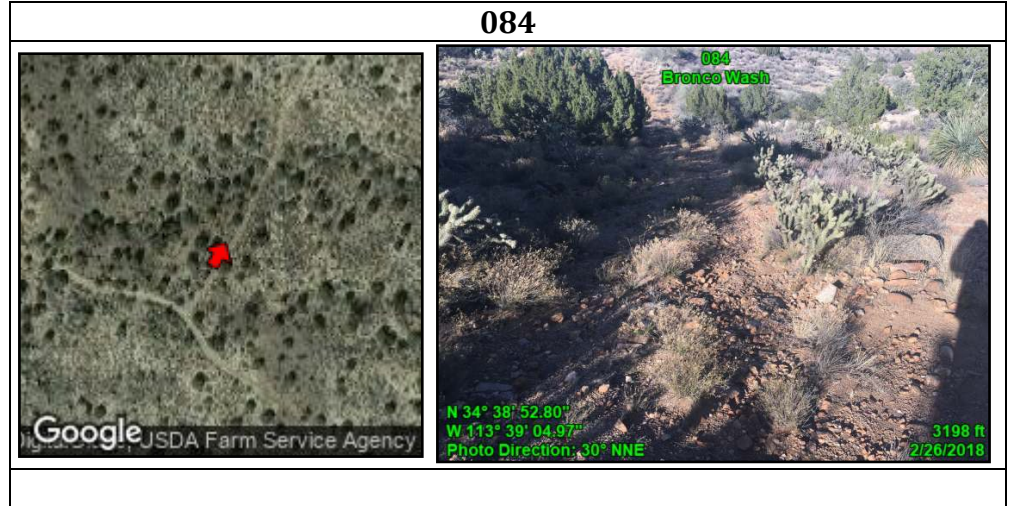


Devils Canyon and Bronco Wash Proposed LWCs

Attributes	
Point	083
Title	
Unit name	Bronco Wash
Route: name	7374
Route:	Bladed
Construction	
Route:	None
Improvements	
Route: Use	No sign observed
Route: Purpose	No apparent purpose
Route: Determination	Reclaimed & unused
Other notes	None
Route:	None
Maintenance	
Feature	Typical Condition of Route
Feature notes	None
Feature Class	Primitive Route



Attributes	
Point	084
Title	
Unit name	Bronco Wash
Route: name	7374A
Route:	Bladed
Construction	
Route:	None
Improvements	
Route: Use	No sign observed
Route: Purpose	No apparent purpose
Route: Determination	Reclaimed & unused
Other notes	None
Route:	None
Maintenance	
Feature	Typical Condition of Route
Feature notes	None
Feature Class	Primitive Route



Devils Canyon and Bronco Wash Proposed LWCs

Attributes

Point	085
Title	
Unit name	Bronco Wash
Route: name	7376A
Route:	Bladed
Construction	
Route:	None
Improvements	
Route: Use	No sign observed
Route: Purpose	No apparent purpose
Route: Determination	Reclaimed & unused
Other notes	None
Route:	None
Maintenance	
Feature	Typical Condition of Route
Feature notes	None
Feature Class	Primitive Route

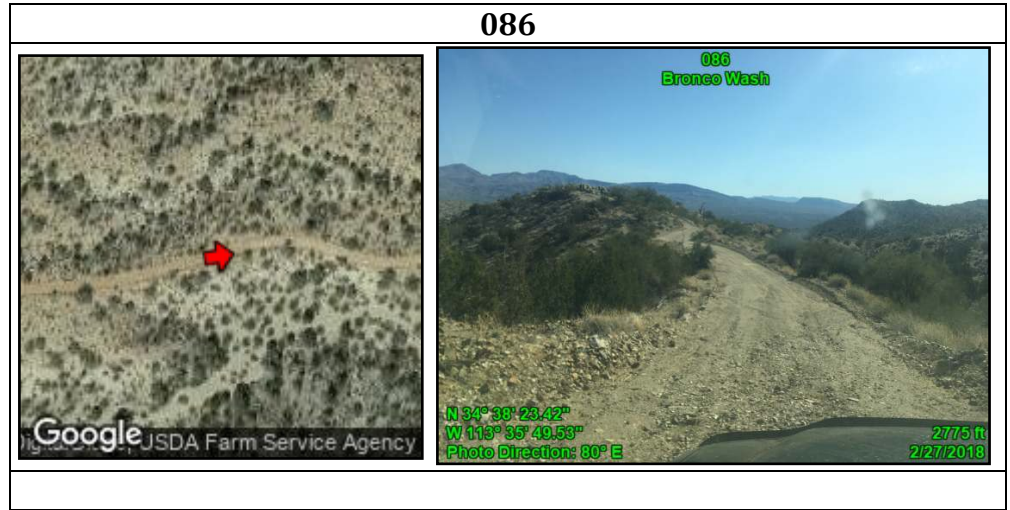
085



Devils Canyon and Bronco Wash Proposed LWCs

Attributes

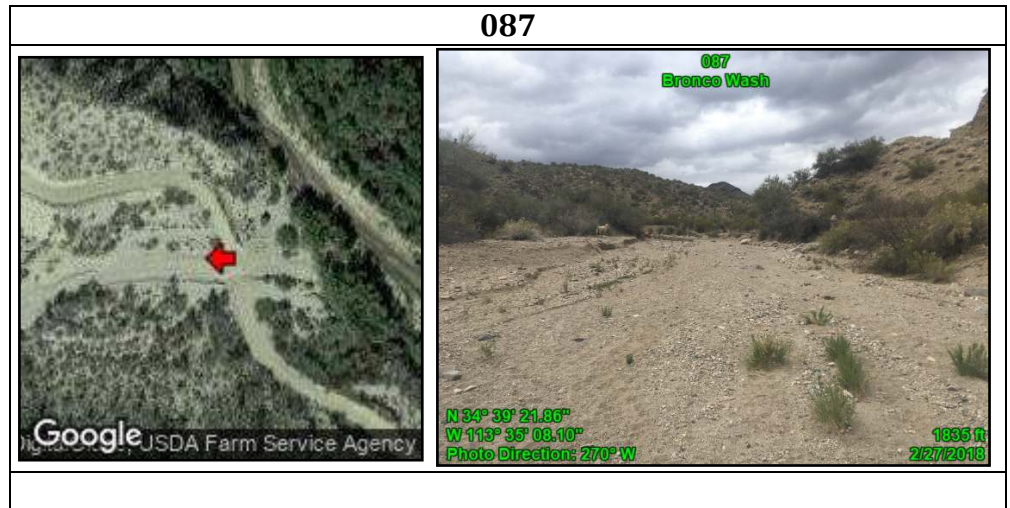
Point	086
Title	
Unit name	Bronco Wash
Route: name	None
Route:	Bladed
Construction	
Route:	None
Improvements	
Route: Use	2-WD Vehicles
Route: Purpose	Multiple uses
Route:	Road
Determination	
Other notes	Unit Boundary
Route:	Semi-recent
Maintenance	evidence - 1-3 years ago
Feature	Typical Condition of Route
Feature notes	None
Feature Class	Boundary Element



Devils Canyon and Bronco Wash Proposed LWCs

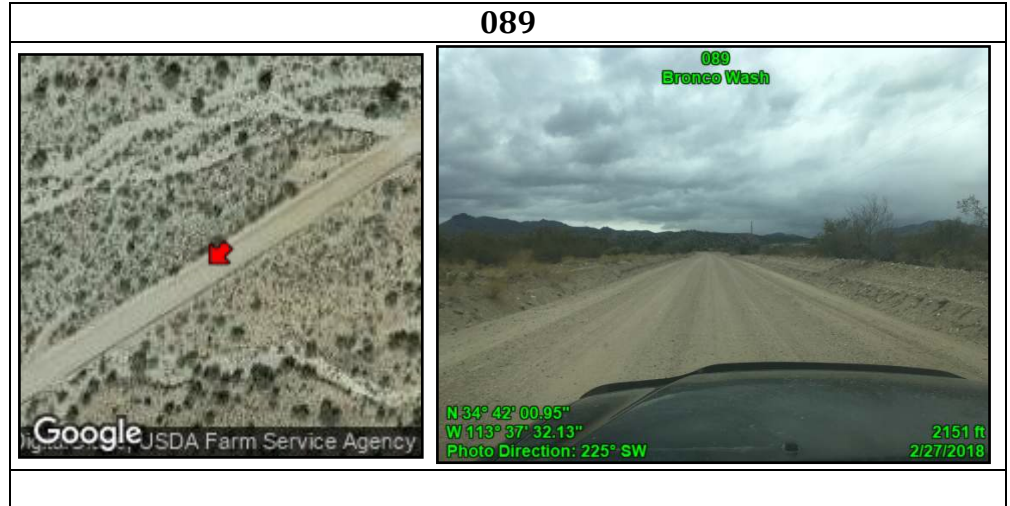
Attributes

Point	087
Title	
Unit name	Bronco Wash
Route: name	None
Route: Construction	No evidence/user-created
Route: Improvements	None
Route: Use	No sign observed
Route: Purpose	No apparent purpose
Route: Determination	Natural Wash
Other notes	None
Route: Maintenance	None
Feature	Typical Condition of Route
Feature notes	None
Feature Class	Primitive Route

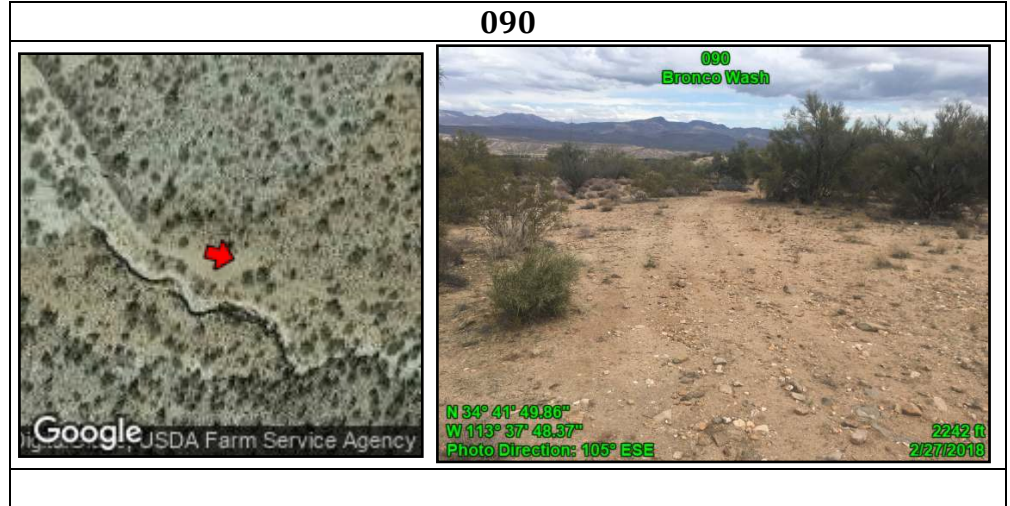


Devils Canyon and Bronco Wash Proposed LWCs

Attributes	
Point	089
Title	
Unit name	Bronco Wash
Route: name	Chicken Springs Rd
Route:	Bladed
Construction	
Route:	Cattle Guards
Improvements	
Route: Use	2-WD Vehicles
Route: Purpose	Multiple uses
Route:	Road
Determination	
Other notes	Unit Boundary
Route:	Very recent blade -
Maintenance	past year
Feature	Typical Condition of Route
Feature notes	None
Feature Class	Boundary Element



Attributes	
Point	090
Title	
Unit name	Bronco Wash
Route: name	None
Route:	No evidence/user-created
Construction	
Route:	None
Improvements	
Route: Use	2-WD Vehicles
Route: Purpose	Stockpond access
Route:	Way
Determination	
Other notes	Kept open solely by passage of vehicles
Route:	None
Maintenance	
Feature	Typical Condition of Route
Feature notes	Feature minimally affects naturalness
Feature Class	Primitive Route

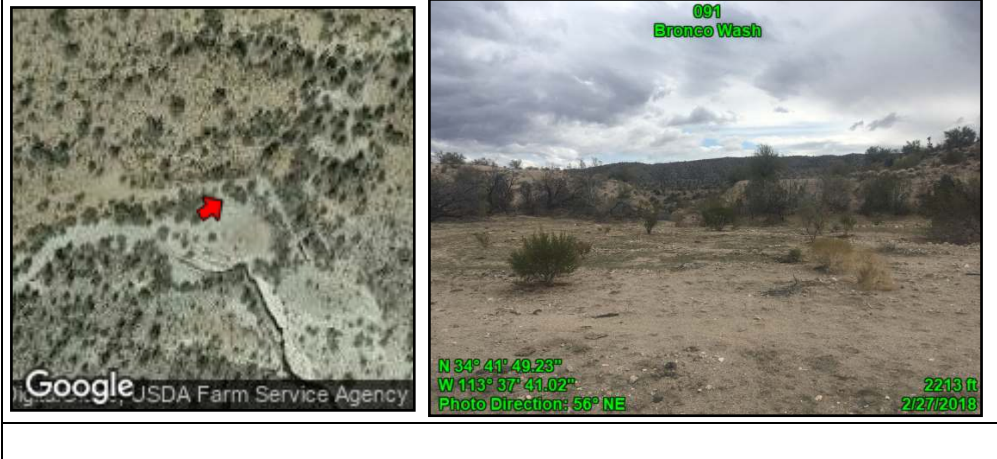


Devils Canyon and Bronco Wash Proposed LWCs

Attributes

Point	091
Title	
Unit name	Bronco Wash
Route: name	N/A
Route:	N/A
Construction	
Route:	N/A
Improvements	
Route: Use	N/A
Route: Purpose	N/A
Route:	N/A
Determination	
Other notes	Blown-out, not functional, and overgrown
Route:	N/A
Maintenance	
Feature	Stockpond
Feature notes	Feature minimally affects naturalness
Feature Class	Primitive Route

091



Attributes

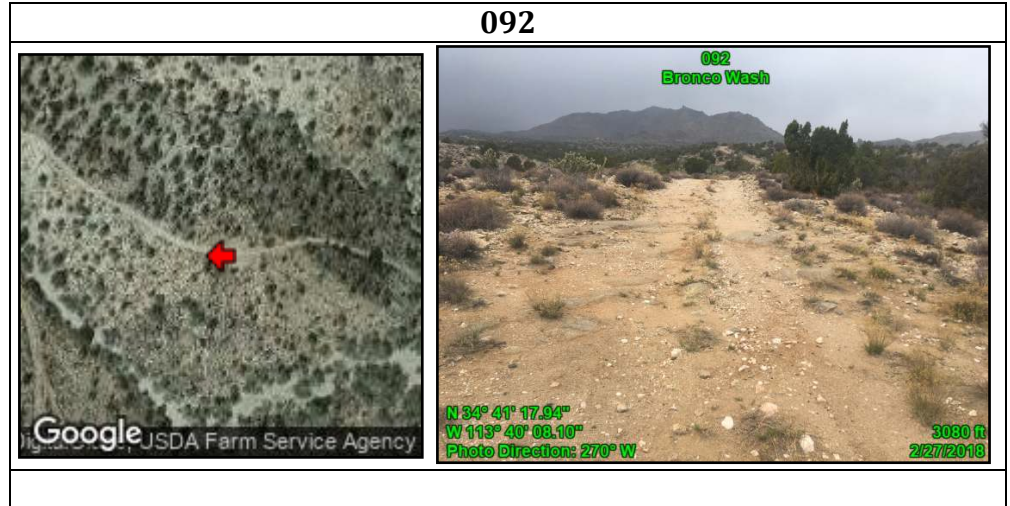
Point	093
Title	
Unit name	Bronco Wash
Route: name	None
Route:	Bladed
Construction	
Route:	None
Improvements	
Route: Use	4WD Vehicles
Route: Purpose	No apparent purpose
Route:	Way
Determination	
Other notes	None
Route:	None
Maintenance	
Feature	Typical Condition of Route
Feature notes	Feature minimally affects naturalness
Feature Class	Primitive Route

093



Devils Canyon and Bronco Wash Proposed LWCs

Attributes	
Point	092
Title	
Unit name	Bronco Wash
Route: name	None
Route:	Bladed
Construction	
Route:	None
Improvements	
Route: Use	N/A
Route: Purpose	No apparent purpose
Route:	Way
Determination	
Other notes	None
Route:	None
Maintenance	
Feature	Typical Condition of Route
Feature notes	None
Feature Class	Primitive Route



Attributes	
Point	088
Title	
Unit name	Bronco Wash
Route: name	None
Route:	Bladed
Construction	
Route:	None
Improvements	
Route: Use	2WD Vehicles
Route: Purpose	Multiple uses
Route:	Road
Determination	
Other notes	Unit Boundary
Route:	Semi-recent evidence - 1-3 years ago
Maintenance	
Feature	Typical Condition of Route
Feature notes	None
Feature Class	Boundary Element

