

Proposed Lands With Wilderness Characteristics:
GILA BOX
Public Lands in Graham and Greenlee Counties, Arizona



A proposal report to the Bureau of Land Management,
Safford Field Office, Arizona
March, 2018
Prepared by Samuel Wershow



Table of Contents

<i>PREFACE: This proposal was developed according to BLM Manual 6310</i>	<i>P. 3</i>
<i>Section 1: Overview of the Proposed Lands with Wilderness Characteristics</i>	
<i>Unit Introduction: Overview of unit and summary map</i>	<i>P. 5</i>
<ul style="list-style-type: none"><i>Provides a brief description of unit location, boundaries and general summary</i>	
<i>Section 2: Documentation of Wilderness Characteristics</i>	
<i>The proposed LWC meets the minimum size criteria for roadless lands</i>	<i>P. 6</i>
<i>The proposed LWC is affected primarily by the forces of nature</i>	<i>P. 6</i>
<i>The proposed LWC has outstanding opportunities for solitude and/or primitive and unconfined recreation</i>	<i>P. 7</i>
<i>Supplemental values</i>	<i>P. 7</i>
<i>Scenic Photos</i>	<i>P. 8</i>
<i>Section 3: Description of the Unit Boundary, Routes, and Impacts</i>	
<i>Reference map of Gila Box proposed LWC, showing placement of inset maps</i>	<i>P. 15</i>
<i>Inset maps detailing photopoint locations</i>	<i>P. 16</i>
<i>Narrative description of the proposed LWC boundary and human impacts</i>	<i>P. 21</i>
<i>Section 4: Photopoint Data</i>	
<i>Data tables and geotagged photographs to accompany the detailed boundary & vehicle routes description</i>	<i>P. 25</i>

Gila Box Proposed LWC

PREFACE: This Proposal was developed according to BLM Manual 6310

General Overview

Instruction Memorandum 2011-154 and Manuals 6310 and 6320 set out the BLM's approach to protecting wilderness characteristics on the public lands. This guidance acknowledges that wilderness is a resource that is part of BLM's multiple use mission, requires the BLM to keep a current inventory of wilderness characteristics, and directs the agency to consider protection of these values in land use planning decisions.¹

In March 2012, the Bureau of Land Management issued updated manuals for inventorying and managing Lands with Wilderness Characteristics on public lands (hereafter often referred to as LWC's). These manuals provide the agency with direction for implementing its legal obligations to inventory and consider management of Lands with Wilderness Characteristics, including the Federal Land Policy and Management Act's provision that BLM "preserve and protect certain public lands in their natural condition" (43 U.S.C. § 1701(a)(8)).

Manual 6310 (Conducting Wilderness Characteristics Inventory on BLM Lands) guides the BLM on how to meet its obligations to inventory for and identify lands with wilderness characteristics. Manual 6320 (Considering Lands with Wilderness Characteristics in the BLM Land Use Planning Process) guides the BLM on the options available to address lands with wilderness characteristics in land use planning once they have been identified in the required inventory, such as putting management prescriptions in place to protect wilderness characteristics. The purpose of this report is to provide the BLM with recommendations for designation of Lands with Wilderness Characteristics in the Safford Resource Area of southeastern Arizona, based on new, accurate, and up-to-date information according to Manual 6310.²

What does Manual 6310 require for the identification of LWC's?

Minimum standard for LWC proposals are described in Manual 6310 in section .06.B.1. There are three things required in a citizen's wilderness proposal in order to meet the minimum standard for BLM to consider it in an inventory and to consider it as new information:

- Detailed map with specific boundaries;
- Detailed narrative of the wilderness characteristics; and
- Photographic documentation.

Once there is new information that meets these standards, then "as soon as practicable, the BLM shall evaluate the information," including field checking as needed and comparing with existing data to see if previous conclusions remain valid. Further, BLM will document its rationale and make it available to the public. (.06.B.2). This proposal report provides the three necessary criteria listed above.

What does Manual 6310 require for an area to be identified as an LWC?

Requirements for determining lands have wilderness characteristics are found in section .06.C.2 of Manual 6310. Lands with Wilderness Characteristics must possess the following traits:

- **Size** : Sufficient roadless area to satisfy size requirements (5,000 acres, of sufficient size to make management practicable or "any roadless island of the public lands"; or contiguous with Wilderness, Wilderness Study Areas, USFWS areas Proposed for Wilderness, Forest Service WSAs or areas of Recommended Wilderness, National Park Service areas Recommended or Proposed for Designation).
- **Naturalness**

1. Memorandum 2011-154 is available online at:

http://www.blm.gov/wo/st/en/info/regulations/Instruction_Memos_and_Bulletins/national_instruction/2011/IM_2011-154.html

2. Manual 6310 is available online at :

http://www.blm.gov/pgdata/etc/medialib/blm/wo/Information_Resources_Management/policy/blm_manual.Par.38337.File.dat/6310.pdf

Gila Box Proposed LWC

Affected primarily by the forces of nature – The criteria is “apparent naturalness” which depends on whether an area looks natural to “the average visitor who is not familiar with the biological composition of natural ecosystems versus human affected ecosystems.” This is an important distinction between ecological integrity and apparent naturalness.

Human impacts – Human impacts must be documented and some are acceptable so long as they are “substantially unnoticeable”; Examples include trails, bridges, fire rings, minor radio repeater sites, air quality monitoring devices, fencing, spring developments, and stock ponds. Outside human impacts – impacts outside the area are generally not considered, but major outside impacts should be noted and evaluated for direct effects on the entire area (the manual explicitly cautions BLM to “avoid an overly strict approach”).

• **Outstanding opportunities for either solitude or primitive and unconfined recreation:**

The area does not have to possess both opportunities for solitude and primitive and unconfined recreation, nor does the area need to have outstanding opportunities on every acre; BLM cannot compare lands in question with other parcels; BLM cannot use any type of rating system or scale.

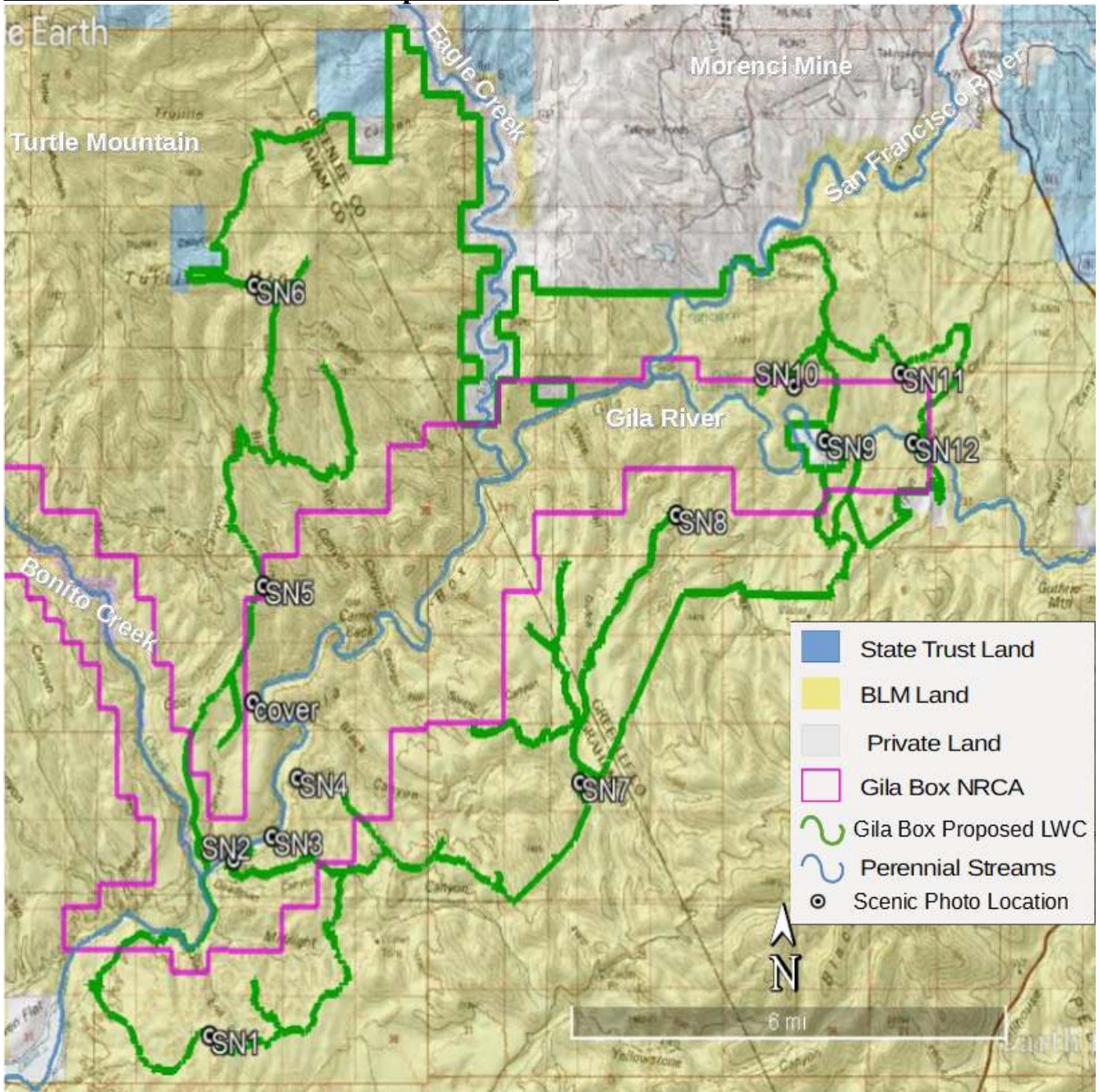
• **Supplemental values:** Ecological, geological, scientific, scenic, educational or historical features should be documented where they exist, although they are not required traits.

What does Manual 6310 require for the identification of the boundaries of an LWC?

Boundaries should be based on wilderness inventory roads and naturalness rather than opportunities for solitude or primitive and unconfined recreation. For inventorying wilderness characteristics, BLM will use the “road” definition from FLPMA’s legislative history; the term “road” and “wilderness inventory road” are interchangeable in this guidance. The AWC survey team took a very literal, maintenance-driven approach to road/way determination.

- “Wilderness inventory roads” are routes which have been: (1) improved and maintained (when needed), (2) by mechanical means (but not solely by the passage of vehicles), (3) to insure relatively regular and continuous use.
- “Primitive routes” or “ways” are transportation linear features located within areas that have been identified as having wilderness characteristics and not meeting the wilderness inventory road definition.
- Lands between individual human impacts should not be automatically excluded from the area; no setbacks or buffers allowed; boundaries should be drawn to exclude developed rights-of-way; “undeveloped rights-of-way and similar possessory interests (e.g., as mineral leases) are not treated as impacts to wilderness characteristics because these rights may never be developed”; areas can have wilderness characteristics even though every acre within the area may not meet all the criteria.

Section 1: Overview of the Proposed LWC



Overview Map – In the Gila Box Proposed LWC, four major perennial streams come together, carving a web of canyons through the Gila Mountains. The LWC straddles the divide between the Gila and Peloncillo Mountains, just northeast of Safford and the Gila Valley. The unit abuts the Turtle Mountain Proposed LWC to the west, and the Black Hills Proposed LWC to the east. The Morenci Mine forms much of the unit’s northern boundary. The Gila Box itself, a narrow chasm over 1,000 feet deep in places, hides over 20 meandering miles of the Gila River. This is the last wild, natural reach of one of Arizona’s most significant streams, an oasis of biodiversity and solitude accessible only by hardy adventures. This canyonlands offers outstanding hiking, hunting, fishing, and nature study, but the top

Gila Box Proposed LWC

draw is one of the state's premier paddles. Navigable through most of the year, multi-day trips down the Gila River offer an unforgettable wilderness experience. In 1990, Congress recognized the exceptional value of this area, designating 23,000 acres the Gila Box Riparian National Conservation Area (RNCA), one of only two such designations in the USA. The proposed LWC includes over half of the RNCA, and also includes thousands of acres of surrounding wildlands.

Section 2: Documentation of Wilderness Characteristics

As presented in this report, the Gila Box Proposed LWC meets the Size, Naturalness and Outstanding Opportunities for Solitude or Primitive Unconfined Recreation criteria laid out in BLM Manual 6310. This unit is an excellent candidate for LWC designation and management for the protection of wilderness values.

Size: The Gila Box proposed LWC is composed of 37,468 contiguous roadless acres. The vast majority of this acreage possesses outstanding wilderness characteristics. It abuts two other proposed LWCs, Turtle Mountain to the west, and Black Hills to the east. Wilderness Inventory Roads form shared boundaries between these proposed units.

Naturalness: The proposed LWC is governed primarily by the forces of nature, free of substantial human impacts, and appearing to be in a natural condition to the average visitor.

The Gila River, along with three major tributaries, is a dominant presence, flowing in an unimpeded natural state for over twenty miles through the proposed LWC. These streams have carved deep canyons throughout the unit, and the forces of geology are on overwhelming display. Topographic complexity, combined with the availability of water in four perennial streams, has promoted the development of an astonishing array of microenvironments, from lush riparian forests to creosote bajadas. Exploring the Gila Box LWC is like inhabiting a natural history textbook – almost any geologic landform or biotic community found in southeast Arizona occurs here.

The vast majority of the unit is pristine, with no discernible human impacts whatsoever. Primitive routes are found at 002, 003, 009, 011-013, 019, 028, 032, 035, 038-043, 045, 048, 071, 073, 074, 079, 090, 092, 094, 096, 102, 105, 107, and 109. These routes are either Ways, unmaintained and kept open solely by the passage of vehicles, or have been completely naturalized. The BLM has established closure points along several routes entering into the Gila Box RNCA, where vehicles are limited only to official established routes.

A few human impacts can be found in the Gillard Hot Springs area, including an abandoned corral at 30b. Vehicle access to this area has been blocked by a gate (103a), and human impacts here are in the process of naturalization. They are substantially unnoticeable due to topographic and vegetative screening. Other human impacts have been excluded via cherrystem roads, providing access to recreation sites or ranching infrastructure within the proposed LWC. Cherrystems depart from the unit boundary at 007, 014, 017, 027, 055, 057, 067, 084, 086, 088, 093 and 104. Typically, these cherrystems lead to minor ranching infrastructure like the water tank at 105 or the corral at 087. These impacts are excluded from the unit. Given the unit's size, and screening by topography and vegetation, these impacts minimally affect the naturalness of the surrounding unit. These impacts are sufficiently dispersed throughout the unit, and dwarfed by the size of the unit and scale of the landscape. Within the core canyonlands of the Gila Box, human impacts are nonexistent. In many areas, a visitor could hike for many miles without encountering any cherrystem roads, or even primitive routes.

Outstanding Opportunities for Solitude or Primitive and Unconfined Recreation

In the Gila Box proposed LWC, rugged topography, dramatic scenic vistas, and a wild, remote character create outstanding opportunities for both solitude *and* primitive and unconfined recreation.

Solitude

Solitude is virtually assured through most of the 37,000 plus acres of the proposed LWC. Aside from a few access points via rough cherrystem roads, the vast majority of the acreage is accessible only by long, cross-country hikes, or by non-motorized watercraft. The canyonlands of the unit's interior would take many hours of hiking or paddling to reach. This is wild, remote country with minimal infrastructure for recreation. In dozens of tributary canyons, a visitor will be completely alone, miles from any sights or sounds of humanity. Once in the Gila Box itself, a visitor is immersed in a lush riparian forest, guarded by thousand foot cliffs. This a world apart - a humbling, awe-inspiring encounter with the raw forces of nature. Solitude is also plentiful in the unit's mountainous uplands. Steep topography is the rule throughout the unit, and dense vegetation also provides screening in many areas. In its northwestern portion, the unit abuts another large undeveloped area with wilderness characteristics – the Turtle Mountain proposed LWC. Separated only by a rough, faint, dirt road, these units together represent a vast tract of wildlands, adding to the experience of solitude in either unit.

Primitive and Unconfined Recreation

The Gila Box Proposed LWC offers a wide array of outstanding recreation opportunities. Foremost among these, the Gila Box canyon is one of Arizona's premier paddles- over twenty miles of wild, untamed, river through a magnificent canyon. Primitive camping abounds on beaches along bends in the river, offering a rare chance to camp in a riparian paradise. This journey offers challenging paddling, but also terrific opportunities for the study and contemplation of nature. The river here is an oasis, attracting rich bird, mammal, fish, and amphibian life, including a number of rare and elusive species. Rocky Mountain bighorn sheep are a common sight in these canyons, and over 200 species of bird have been recorded here. Wildlife photographers, hunters, and fishers will all find world-class opportunities. Game species recorded in this area include bighorn sheep, Gambel's quail, scaled quail, javelina, band-tailed pigeon, mountain lion, mule-deer, fox squirrel, and white-winged dove. Outside of the main canyon, bold hikers will encounter an untamed wilderness, demanding careful route-finding, endurance, and technical skill. Their reward will be lonely side canyons, forgotten archaeological sites, and sweeping vistas, amidst complete solitude.

Supplemental values: The Gila Box proposed LWC would protect and enhance the outstanding recreation and conservation values already recognized by the Gila Box Riparian National Conservation Area.

This area includes over 20 miles of the Gila River and significant stretches of 3 perennial tributaries – Bonita Creek, Eagle Creek, and the San Francisco River. Together, these streams represent one of Arizona's most intact desert riparian ecosystems. According to Arizona Dept. of Game and Fish, 21 sensitive species of conservation concern occur here. Fourteen of these, including ten fish species, have recognized status under the federal Endangered Species Act³. The desert pupfish, Gila chub, loach minnow, spikedace, and Gila topminnow are all listed as endangered, while the yellow-billed cuckoo is

3 This list was obtained using the Heritage Data Management Sysyterm (HDMS) Query tool at www.habimap.org. More information about this tool can be found at <https://www.azgfd.com/Wildlife/HeritageFund/>

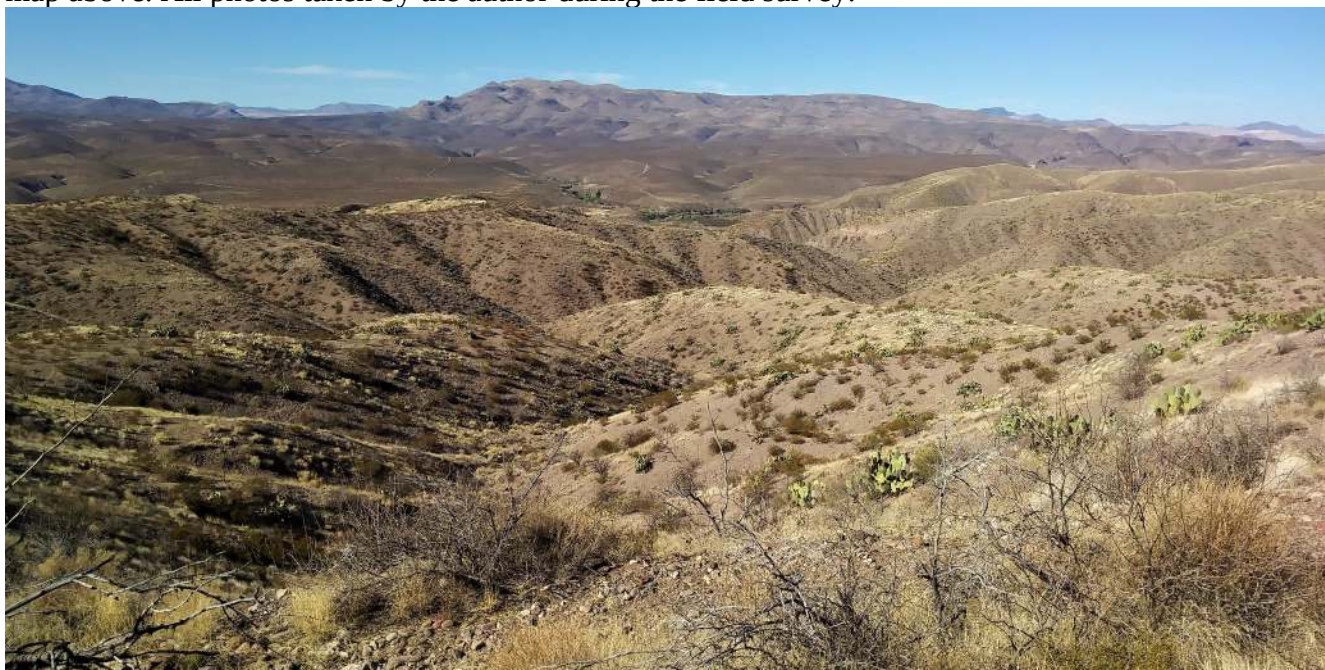
Gila Box Proposed LWC

listed as threatened. An LWC designation would further protect the delicate riparian habitat that supports these species.

Furthermore, the Gila River has been profoundly altered by human development along most of its course in Arizona. The reach within the proposed LWC is one of the last significant wild, unaltered streams in the state. It represents an irreplaceable component of Arizona's natural heritage. Conserving this area will allow future generations to experience and enjoy a natural desert river in a wilderness setting.

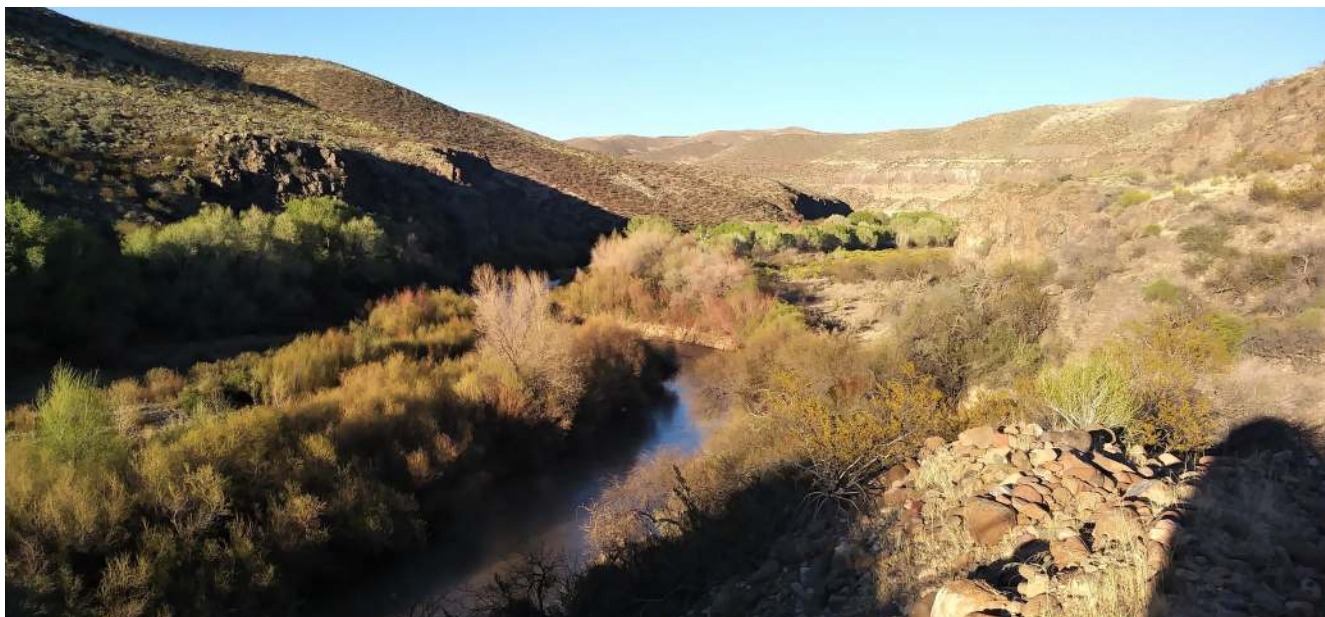
Scenic Photos

The following photos document the naturalness, wilderness characteristics, and potential for solitude and primitive and unconfined recreation present in the unit. Photo locations are detailed in the summary map above. All photos taken by the author during the field survey.

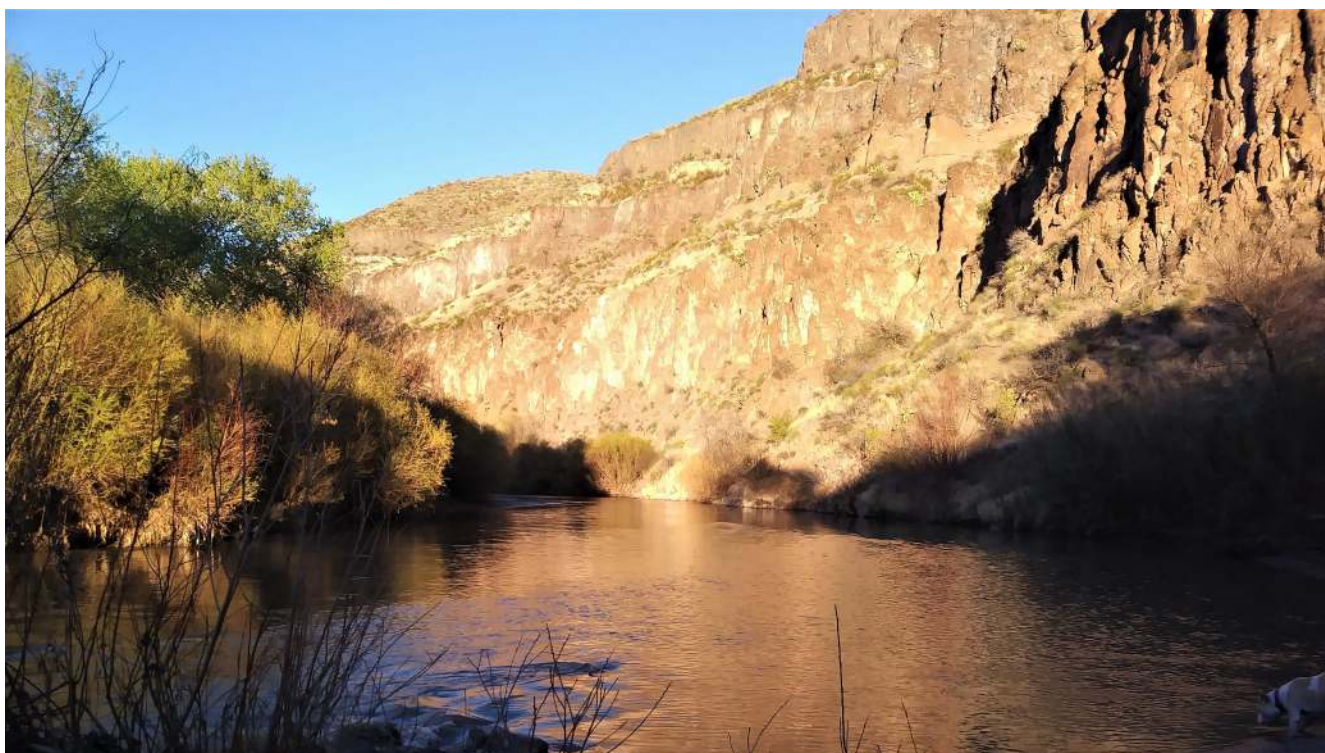


Scenic Photo 1 – Looking north across the southwestern portion of the unit. Rail End Canyon (foreground) provides hiking access to the Gila River near the confluence with Bonita Creek to the north. Turtle Mountain looms in the background. Sonoran desert uplands challenge cross country hikers, hunters, and equestrians, while canyons offer secret routes into the watery oasis of the Gila.

Gila Box Proposed LWC



Scenic Photo 2 – The Gila River just above Bonita Creek. This lush riparian forest of cottonwood and willow harbors abundant wildlife, and provides visitors opportunities for quiet contemplation of nature. In its meandering lower reaches, the Gila flows gently most of the year, tempting swimmers, fishermen, and paddlers.



Scenic Photo 3 – Cliffs over a bend in the Gila River at sunset. The riverside cliffs are outstanding habitat for bighorn sheep, while the riparian forest is a riot of birdsong. Morning and evening light creates dazzling displays on a tapestry of rock and calm water. This landscape invites both exploration and quiet meditation.

Gila Box Proposed LWC



Scenic Photo 4 – 600 foot cliffs tower over the Gila River, highlighting the stark contrasts between the riparian zone and surrounding uplands. A variety of sedimentary and volcanic strata are visible. Stunning views abound throughout the proposed LWC, a playground for photographers.



Scenic photo 5 - The raw forces of geology are on display as four perennial streams cut through the high divide between the Gila and Peloncillo Mountains. Thousand foot cliffs guard access to a maze of remote canyons, accessible only by foot or non-motorized watercraft. This raw, scenic, landscape provides a multitude of outstanding opportunities for wilderness adventure.

Gila Box Proposed LWC



Scenic Photo 6 – In the northwestern portion of the unit, rolling grasslands and juniper woodlands rise steeply into the Gila Mountains, thousands of feet above the canyonlands of the Gila Box. Hunting, hiking and horseback riding are all outstanding here. Mule deer and mountain lion patrol these high, lonely, slopes.



Scenic Photo 7 – A sandy wash, nestled in the bottom of a remote canyon. These innumerable side canyons provide excellent day hikes or backpacking routes deep into the interior of the proposed LWC, and eventually, to the Gila Box itself.

Gila Box Proposed LWC



Scenic Photo 8 – Looking down a deep tributary canyon towards the Gila River, near the upstream start of the Gila Box. The high peaks in the background are in the Apache National forest, near the AZ-NM border. Sweeping vistas and challenging terrain offer a wide variety of outstanding wilderness recreation.



Scenic Photo 9 – Sheer cliffs over a wide bend in the Gila River, just above the confluence with the San Francisco River. Rugged topography and abundant water create a diverse mosaic of different habitat types, making this area a haven for biodiversity. Cliffs, canyons, and dense vegetation provide screening for exceptional solitude.

Gila Box Proposed LWC



Scenic Photo 10 – Looking west toward the confluence of the Gila and San Francisco Rivers. At the confluence, the canyon narrows and thousand foot cliffs rise on either side. Once inside, a visitor is utterly alone, isolated from the sights and sounds of humanity. This canyonlands is accessed primarily by watercraft, one of the few opportunities for a multi-day float trip in the entire state.



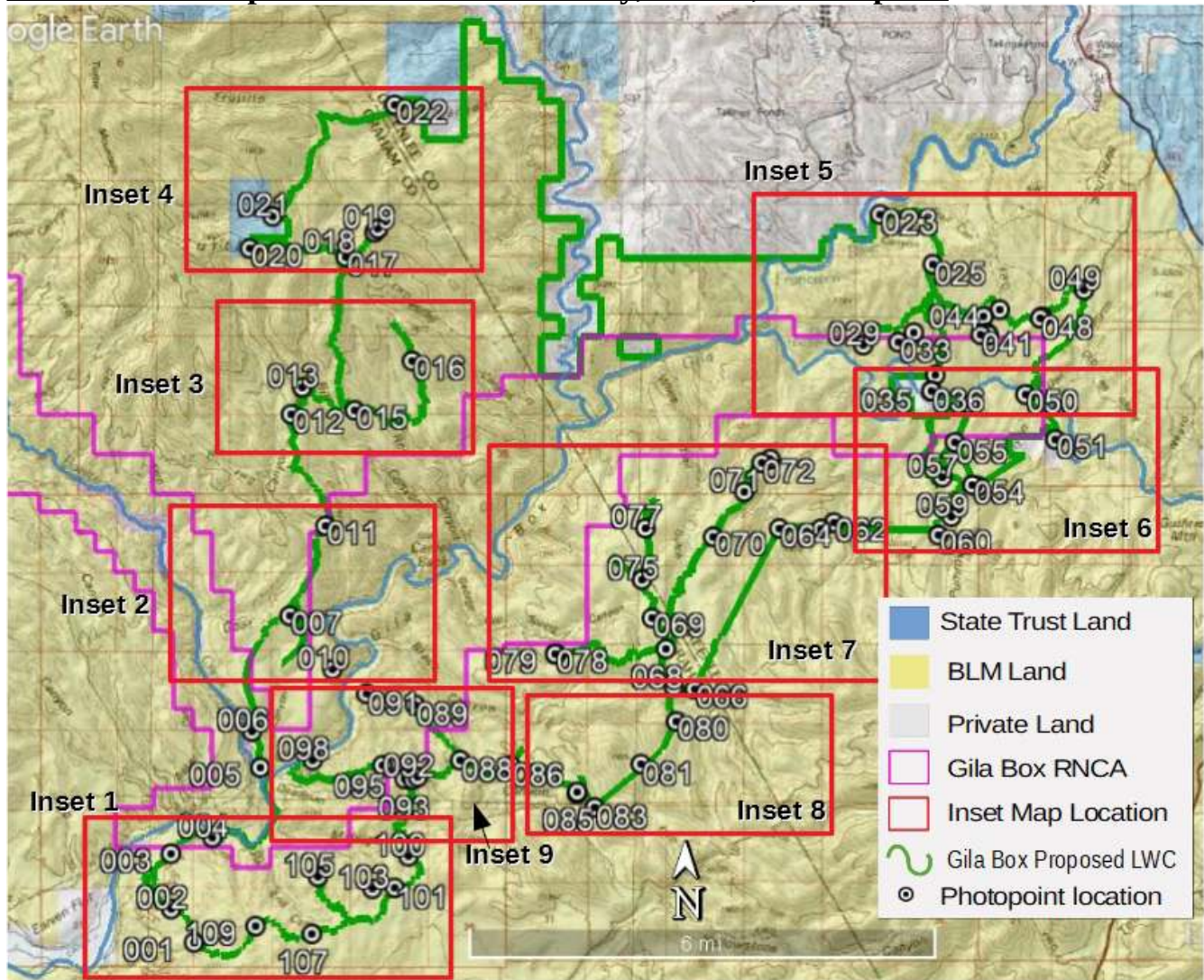
Scenic Photo 11 – A lonely wash in the northeastern portion of the unit. Complex drainage networks cut through sedimentary strata, leaving a deeply eroded landscape with excellent opportunities for solitude. Hundreds of washes like this one provide tranquil hiking routes through otherwise difficult desert terrain.

Gila Box Proposed LWC



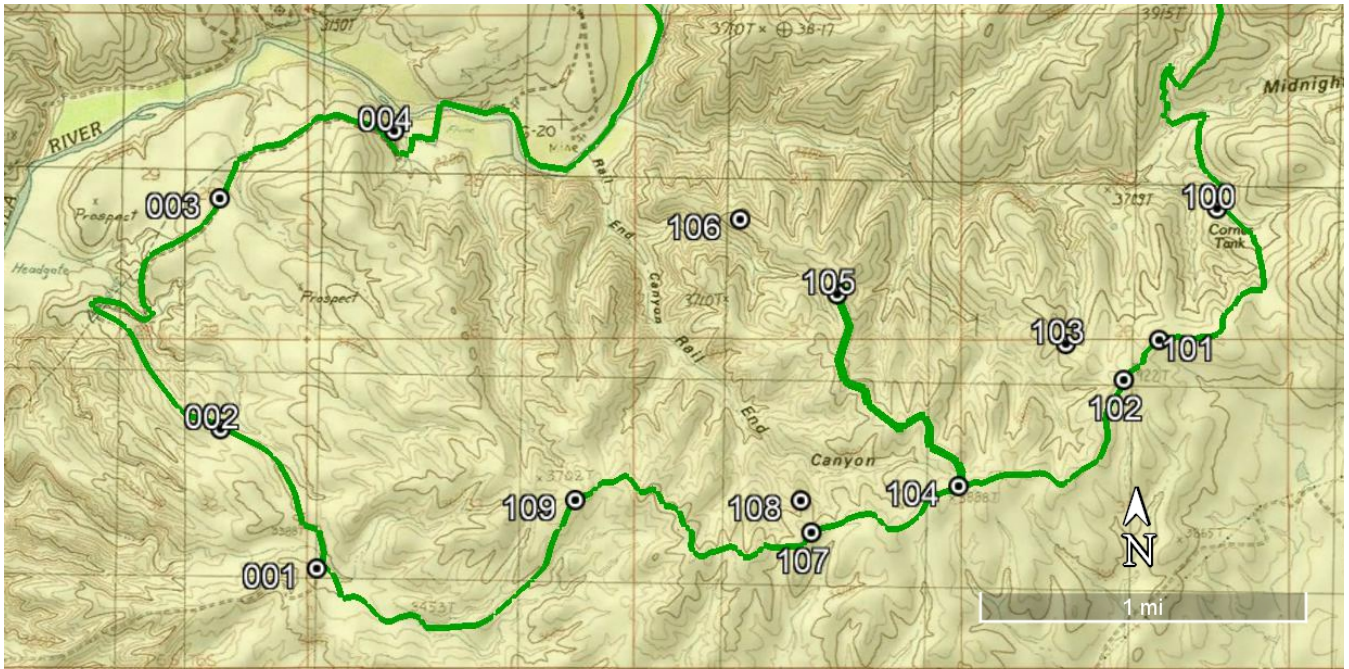
Scenic Photo 12 – The Gila River, just below the Old Safford Bridge and boat launch. This is the usual put-in spot for paddlers embarking on a one to three day float of the Gila Box. Once inside the canyon, visitors are immersed in riparian wilderness paradise. The paddling ranges from easy to moderate depending on the flow, and excellent riverside campsites are abundant throughout.

Section 3: Description of the Unit Boundary, Routes, and Impacts

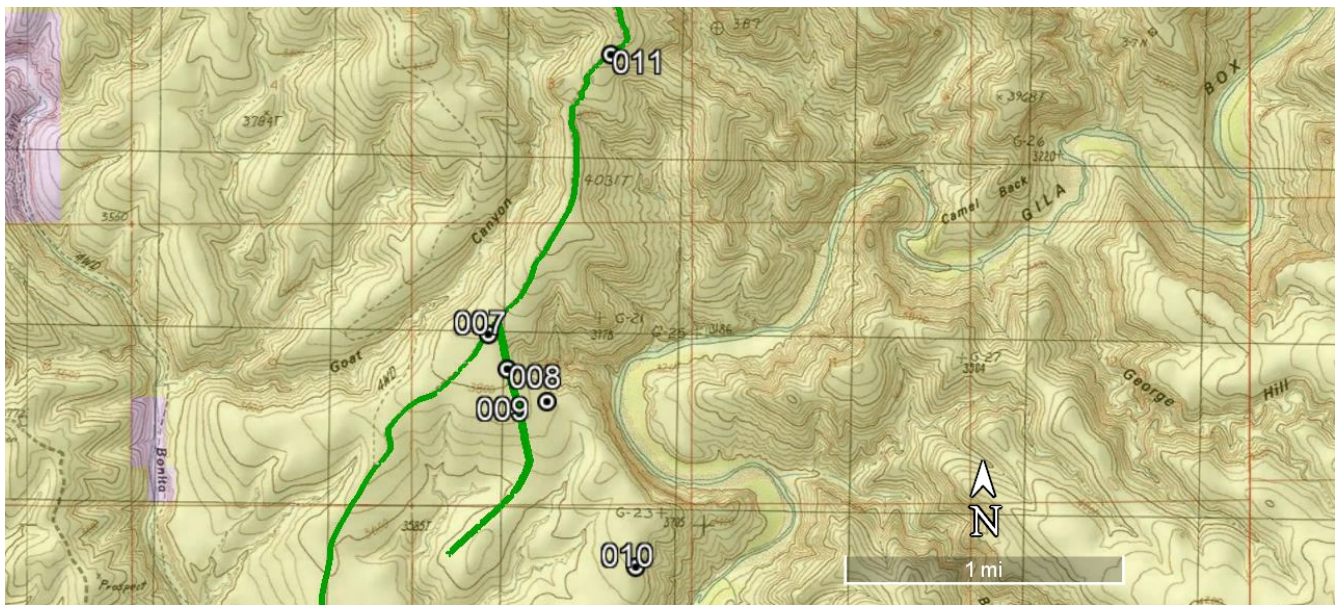


Gila Box LWC Reference Map – Locations of inset maps detailing the proposed unit boundary and other impacts within the LWC.

Gila Box Proposed LWC



Inset 1 – The southwestern corner of the unit, including photopoints 001-004 and 100-109. 004 shows the Buena Vista Aqueduct, which forms the unit boundary crossing the Gila River. 104 shows a cherrystem to a water tank at 105. 002, 003, 102, 107, 109 show the start of primitive Ways heading into the unit.

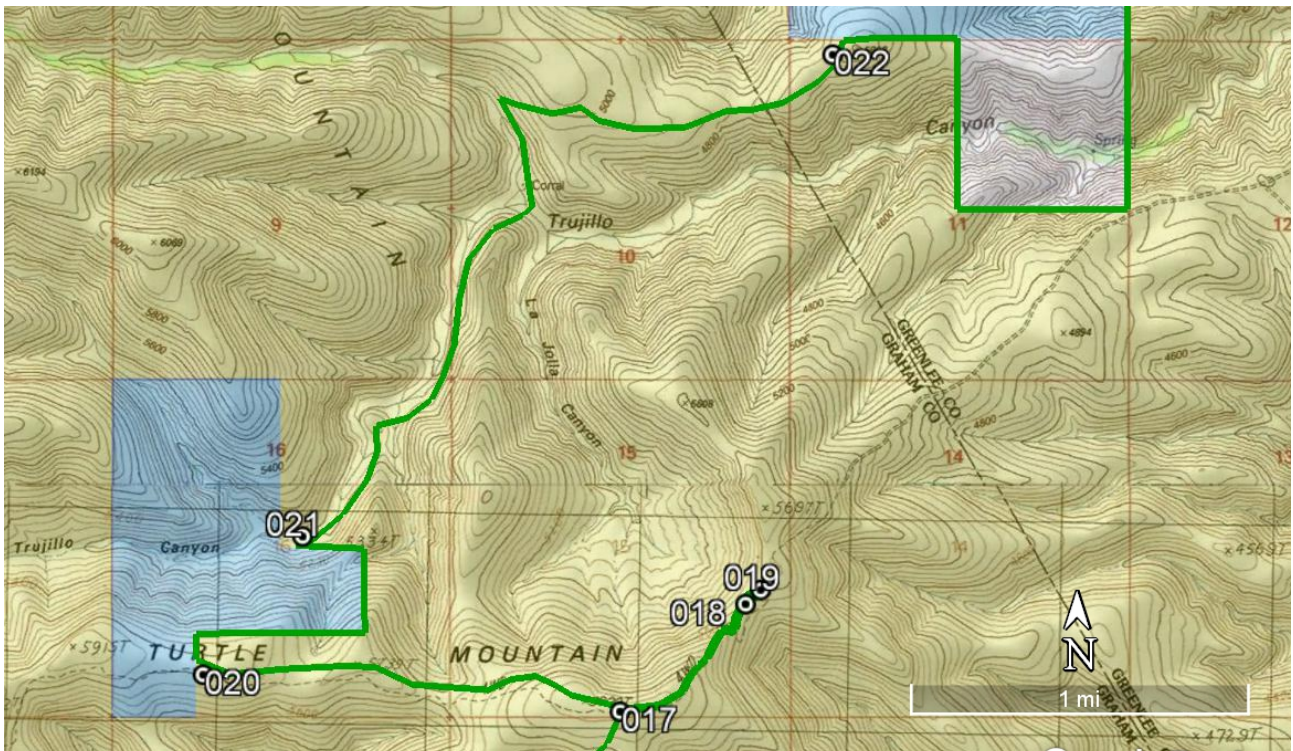


Inset 2 – Photopoints 007-011, along the unit's western boundary. 007 shows the beginning of a cherrystem at the Orange Cliffs Road.

Gila Box Proposed LWC

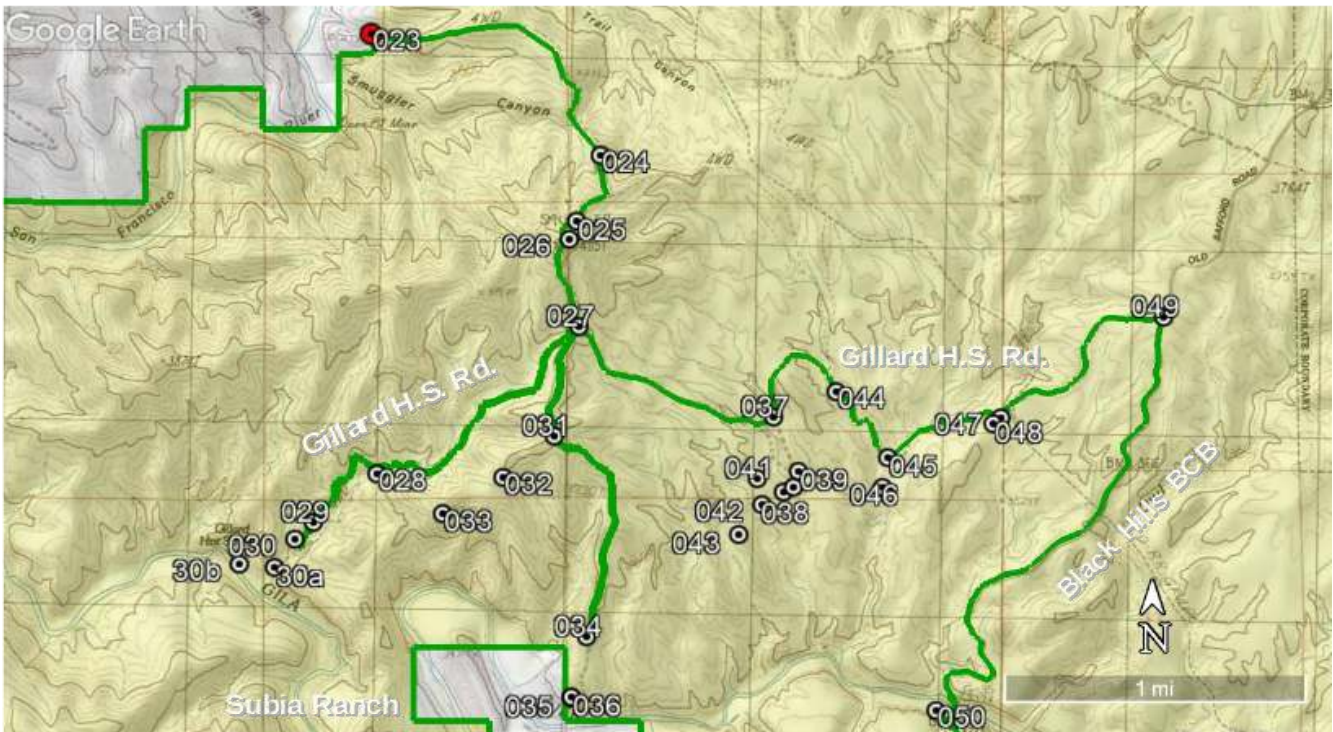


Inset 3 – Photopoints 012-016 along the western unit boundary, including a cherrystem at 014 heading to water tanks in the saddle beyond 016.

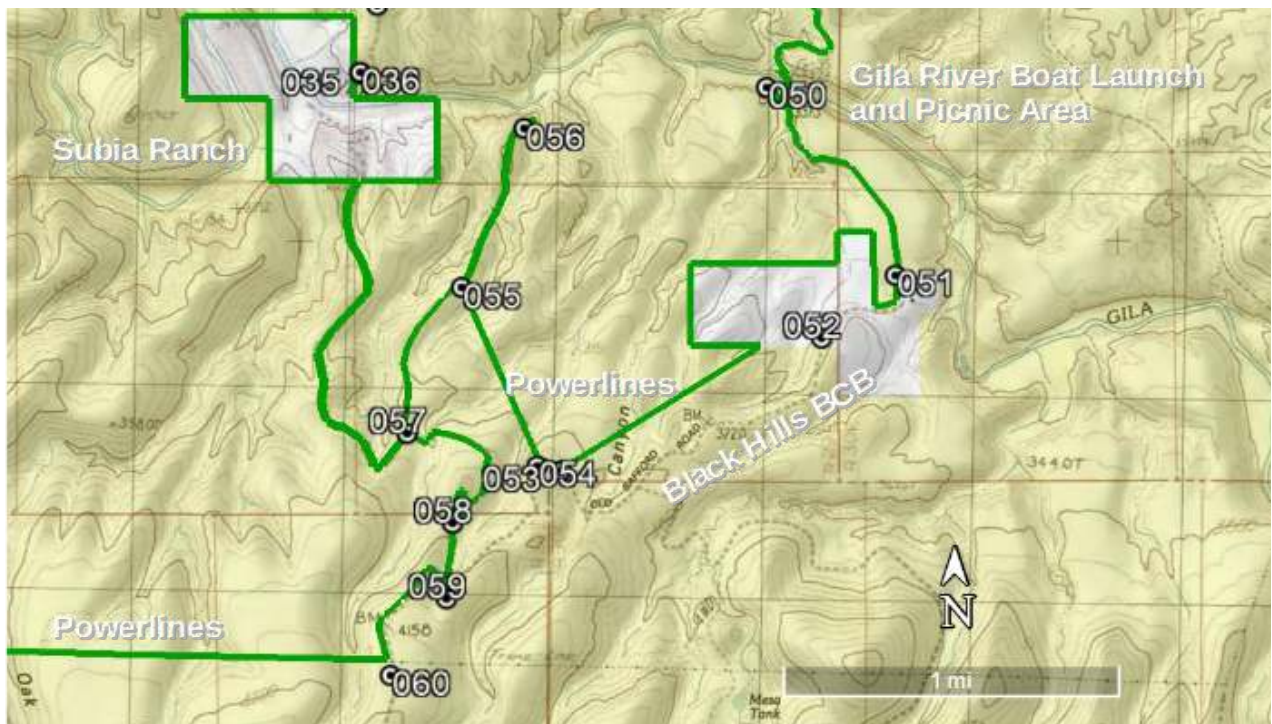


Inset 4 – Photopoints 017-022, along the northwestern portion of the unit boundary. 017 is the start of a cherrystem to a water tank at 018. At point 022, the unit boundary becomes state and private land boundaries.

Gila Box Proposed LWC

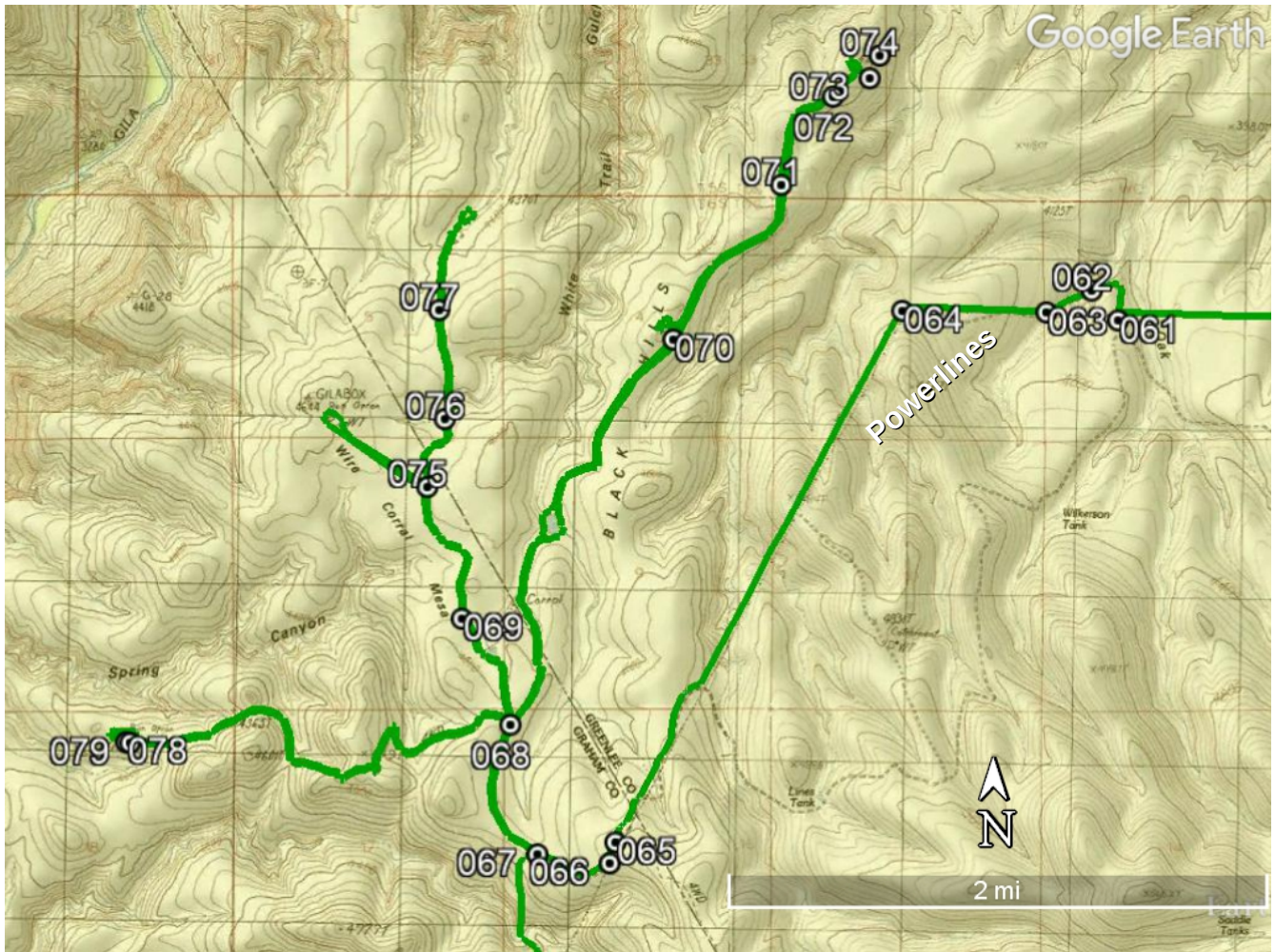


Inset 5 – Photopoints 023-050 in the northeastern portion of the unit. 027 is the start of two major cherrystems, including the Gillard Hot Springs Road providing access to the Gila River (29-30b).



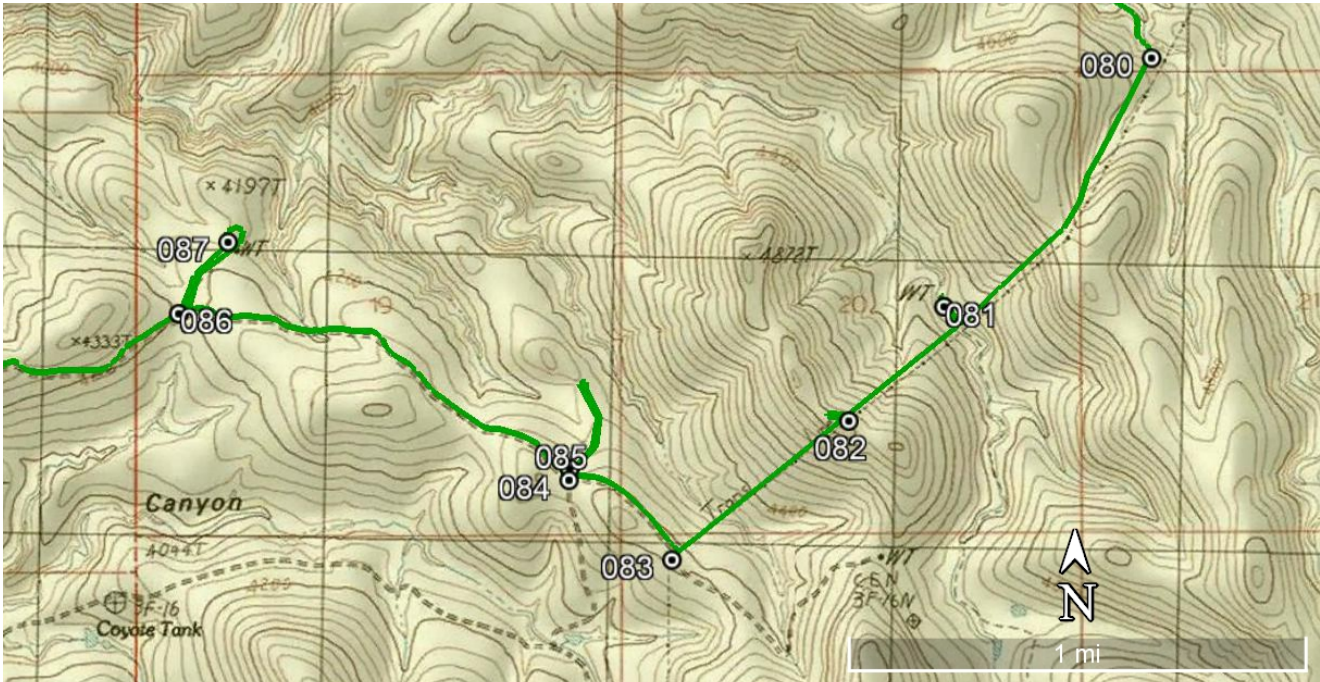
Inset 6 – Photopoints 050-060 along the eastern unit boundary. The Black Hills BCB and several powerlines form most of the unit boundary in this section. 057 is the start of a cherrystem providing access to the Subia Ranch.

Gila Box Proposed LWC

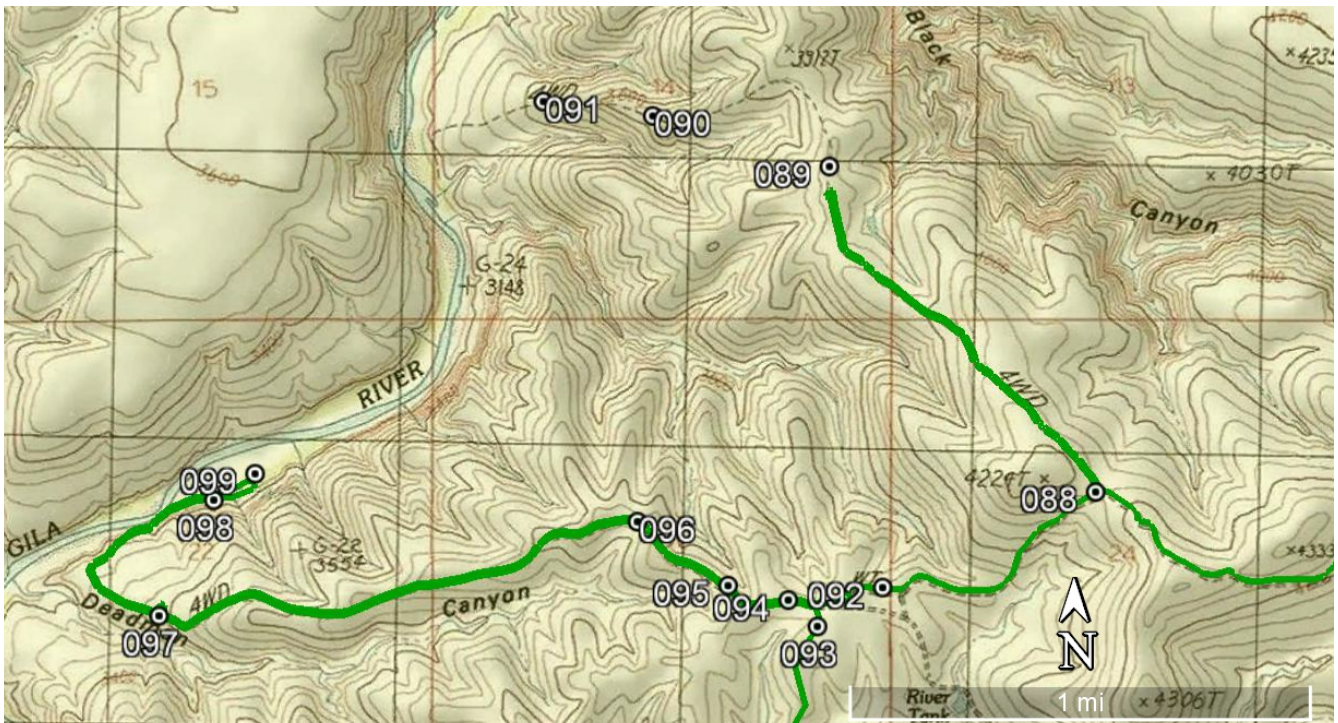


Inset 7 – Photopoints 061-079 in the southeastern portion of the unit. Powerlines form the bulk of the boundary through this section. A major cherrystem complex originates at 067, providing access to a series of tanks and other ranching infrastructure.

Gila Box Proposed LWC



Inset 8 - Photopoints 080-087. From 080 to 083 powerlines define the unit boundary. 084 and 086 show the start of short cherrystems into the unit.



Inset 9 – Two major cherrystems in the southeast portion of the unit. At 088, a cherrystem provides access to a water tank, thereafter becoming a Way. 094 shows the Deadman Canyon Road, providing access to a corral, well, and pumphouse along the Gila River (088-089). This is one of the only vehicle access points to the Gila River within the LWC.

Narrative description of the proposed LWC boundary and human impacts

Western Boundary: 001-022, Buena Vista Aqueduct Rd, Gila River, New Bull Gap Rd.

- At 001, the unit boundary follows the Buena Vista Aqueduct Rd. north
- 002 is a reclaimed and completely naturalized primitive route, identified on the BLM route inventory
- 003 is a faint Way, neither constructed nor maintained by mechanical means, and kept open solely by the passage of vehicles
- The unit boundary continues along this road to the Buena Vista Aqueduct, shown at 004, where the unit boundary continues east and then north along the Gila River.
- The channel of the Gila River continues to form the wilderness boundary until 005, a large clearing on the north/west bank with watering and feeding troughs.
- The boundary follows the access road north from this clearing to a junction with the New Bull Gap Road, shown as the left fork in 006. The New Bull Gap Rd forms the unit boundary to the north.
- 007 is the start of a cherrystem road southeast into the unit, signed as the Orange Cliffs Road.
 - The road forks at 008, with a cherrystem road proceeding southwest to a used and maintained water tank (excluded).
 - The left hand fork, shown again at 009, is a rough, unmaintained Way, providing access to a scenic viewpoint at 010. The route, although once bladed, has fallen into disrepair, becoming overgrown or heavily eroded in many places, and disappearing entirely after 010.
- 011 is a faint, overgrown Way, showing no signs of recent vehicle use or maintenance.
- 012 is a faint, overgrown Way, showing no signs of recent vehicle use or maintenance.
- 013 is a faint, overgrown Way, showing no signs of recent vehicle use or maintenance.
- 014 is the start of a cherrystem, accessing a dirt tank (015), a water pipeline (016), and water tanks (016b). Beyond these tanks, the route becomes a Way, serving no apparent purposes and kept open solely by the passage of vehicles.
- 017 is a short cherrystem, heading northeast to a used and maintained water tank (018). After this point, the route deteriorates, becoming a Way in the process of naturalization/revegetation (019).
- The boundary continues west along the road, hitting a small section of State Trust land at 020, and rejoining the road at 021.
- The boundary again hits State Trust land at 022.

The northern boundary (022-023) consists of a small parcel of State Trust land and a long private land boundary along Eagle Creek and then south of the Morenci Mine.

The eastern unit boundary (023-083) consists of several Wilderness Inventory Roads, a small private inholding, and several powerlines.

- At 023 the unit boundary follows an unnamed road east and then south from the private land boundary.
- At 024, the unit boundary follows a road southwest from the junction.
- At 025, the boundary road briefly forks, with the boundary following the west fork, around an excluded hilltop water tank at 026.
- 027 is a three way junction with the Gillard Hot Springs Rd.. The unit boundary follows this road east, while a cherrystem road heads west into the unit towards Gillard Hot Springs.

Gila Box Proposed LWC

- 028 shows a primitive route through a natural wash, branching south off the cherrystem. The route is blocked by a fence and shows no signs of vehicle use beyond the fence.
- 029 shows the parking area and trailhead for Gillard Hot Springs (excluded).
- 030 is a vehicle turnaround just below the parking area. This constitutes the end of the cherrystem road. Beyond this point, the route becomes a foot trail, with a vehicle barrier at 030a. The trail continues down to the river, where there is an abandoned corral at 030b.
- Another cherrystem road heads south from 027.
 - 031 is a junction, with the cherrystem road continuing to the south. The primitive Way breaking off to the west soon becomes overgrown (032), becoming faint and coming to a dead end at 033. This Way shows no recent signs of maintenance and serves no apparent purpose.
 - The cherrystem road becomes faint and overgrown at 034, and has become completely reclaimed by 035.
 - 036 shows an overview of the Subia Ranch inholding, which is mostly hidden by dense riparian vegetation. While the ranch itself is private land, excluded from the unit via a cherrystem, it is substantially unnoticeable from most vantage points, minimally impacting the naturalness of the surrounding unit.
- The unit boundary continues east along the Gillard Hot Springs Rd. to a junction at 037.
 - A network of primitive, user created Ways begins south of 037. While this route initially looks well-traveled, this is primarily due to the flatness of terrain, sandy soil, and delicate vegetation. The track is easily worn in despite a lack of apparent maintenance. This route branches into several other Ways (see 038-043), none of which are maintained, regularly used, or serving any purpose. They are kept open solely by the passage of vehicles or in the process of revegetation.
- At 044, a few vehicle tracks have entered a natural wash. This route shows no signs of maintenance, construction, regular use, or purpose.
- 045 is a natural wash showing a significant amount of vehicle use, but no construction or maintenance. There is a closure point at 046, and no substantial vehicle use beyond that point.
- 047 is a used and maintained corral, excluded from the unit.
 - There is a reclaimed and unused route heading south from the corral (048). It is completely revegetated and substantially unnoticeable.
- 049 is the junction between the Black Hills Backcountry Byway (BCB) and the Gillard H.S. Rd. The boundary follows the BCB south.
- 050 is a boat launch and picnic area near the Old Safford Bridge, which crosses the Gila River. This infrastructure is excluded from the unit but provides terrific access for paddlers.
- At 051 the unit boundary briefly follows the boundary of a private land inholding. This inholding forms the unit boundary to powerline, shown in 052, becoming the unit boundary southwest into BLM land.
- At 053, the unit boundary briefly rejoins the BCB, again following powerlines northwest from 054.
- At 055, the powerlines and unit boundary join with a road, forming a cherrystem road north. This road dead ends at 056.
- The unit boundary continues south from 055, to a junction with the Subia Ranch Rd. at 057. From this point, a cherrystem continues west and then north along the Subia Ranch Rd., to the private inholding of the Subia Ranch itself. The unit boundary continues south from the

Gila Box Proposed LWC

junction (057), past a short cherrystem to an excluded gravel pit (058), to the junction with the Black Hills BCC at 059.

- At 060, the unit boundary follows powerlines west from the BCB, hitting the Goat Camp Rd at 061. This road briefly forms the unit boundary, passing a substantially unnoticeable dirt tank at 062, and rejoining the powerlines at 063.
- At 064, the boundary briefly leaves the powerline route, excluding a water tank. The boundary then follows the powerlines southwest, occasionally departing the lines themselves to follow the utility access road. Powerlines and the access road are shown at 065.
- At 066 the boundary follows the Mesa Road west from the powerlines.
- The Mesa Rd. continues as a cherrystem northwest from 067, branching into 3 cherrystems at 068, presented from east to west.
 - The easternmost cherrystem heads northeast, past an excluded dirt tank to a short spur to a metal water tank, also excluded, at 070.
 - 071 shows an unmaintained, user created Way to the east, kept open solely by the passage of vehicles.
 - 072 shows a junction, with the left hand route continuing to a used and maintained water tank (visible in 072). The right hand fork continues northeast but rapidly deteriorates, becoming overgrown, and showing no signs of recent maintenance or vehicle use (see 73 and 74).
 - The middle cherrystem proceeds north to a junction at 069, providing access via a cutoff road to the eastern cherrystem.
 - 075 shows a junction with a short spur road to a water tank and catchment basin, excluded from the unit.
 - The cherrystem continues north, past an excluded dirt tank at 076, ending at another dirt tank and feeding station, visible in the background of 077.
 - The westernmost cherrystem heads to a catchment basin and water tank at 078. Beyond this point, the route is reclaimed and unused (079), showing no signs of recent maintenance or vehicle use.
- From the jct at 067, the unit boundary continues south along an unnamed road, again joining with the powerlines at 080. The powerlines form the unit boundary to the southwest, with short cherrystems into the unit accessing a corral at 081, and a utility access road at 082.
- At 083, the unit boundary leaves the powerlines, following an unnamed road northwest.

Southern Unit Boundary (83-109): assorted wilderness inventory roads.

- 084 is a jct with a short cherrystem, heading north to a water tank and feeding station, shown in 085. This feature is excluded from the unit but is substantially unnoticeable.
- 086 is a jct with a cherrystem heading north to a corral and watering station at 087, excluded from the unit
- 088 is a cherrystem heading north, bladed at first but apparently unmaintained beyond an excluded water tank (see 089). 090 and 091 show the routes deteriorating condition. It no longer shows signs of vehicle use or maintenance and is in the process of naturalization.
- 092 shows a corral and water tank, excluded from the unit, and a faint primitive Way heading north beyond the corral. The Way is in the process of revegetation and soon peters out.
- 093 is a junction, with a cherrystem continuing west and the unit boundary following an unnamed road south.

Gila Box Proposed LWC

- 094 shows a primitive Way branching off of the cherrystem to the south. It is user created and kept open solely by the passage of vehicles, in contrast to the freshly bladed route along the cherrystem, shown at 095.
- 096 shows another user created Way, kept open solely by the passage of vehicles.
- 097 shows a short spur to a used and maintained water tank.
- At 098, the road ends at a corral and well/pump station (099), along the Gila River. These impacts, while excluded from the unit, are screened by dense riparian vegetation and the topography of the Gila River canyon, rendering them unnoticeable from even a short distance away.
- From 093, the unit boundary continues along an unnamed road to a dirt tank in the process of repair at 100. Typical condition of this rough, but apparently used and maintained route can be seen at 101.
- 102 shows a jct with a Way, unmaintained and serving no apparent purpose, that disappears entirely at 103.
- 104 shows a junction with a cherrystem road to the north, accessing an excluded water tank at 105. Beyond the water tank, the route serves no apparent purpose and becomes increasingly faint (see 106). It is classified as a Way beyond 105.
- 107 is a faint, lightly used Way heading north into the unit, showing no recent signs of maintenance. At 108, the Way forks into two faint Ways, but both routes are re-naturalized, showing no signs of recent use or maintenance.
- 109 shows a faint, user-created Way, in the process of revegetation. The unit boundary continues west from this point to the start of the description at 001.

This concludes the boundary description